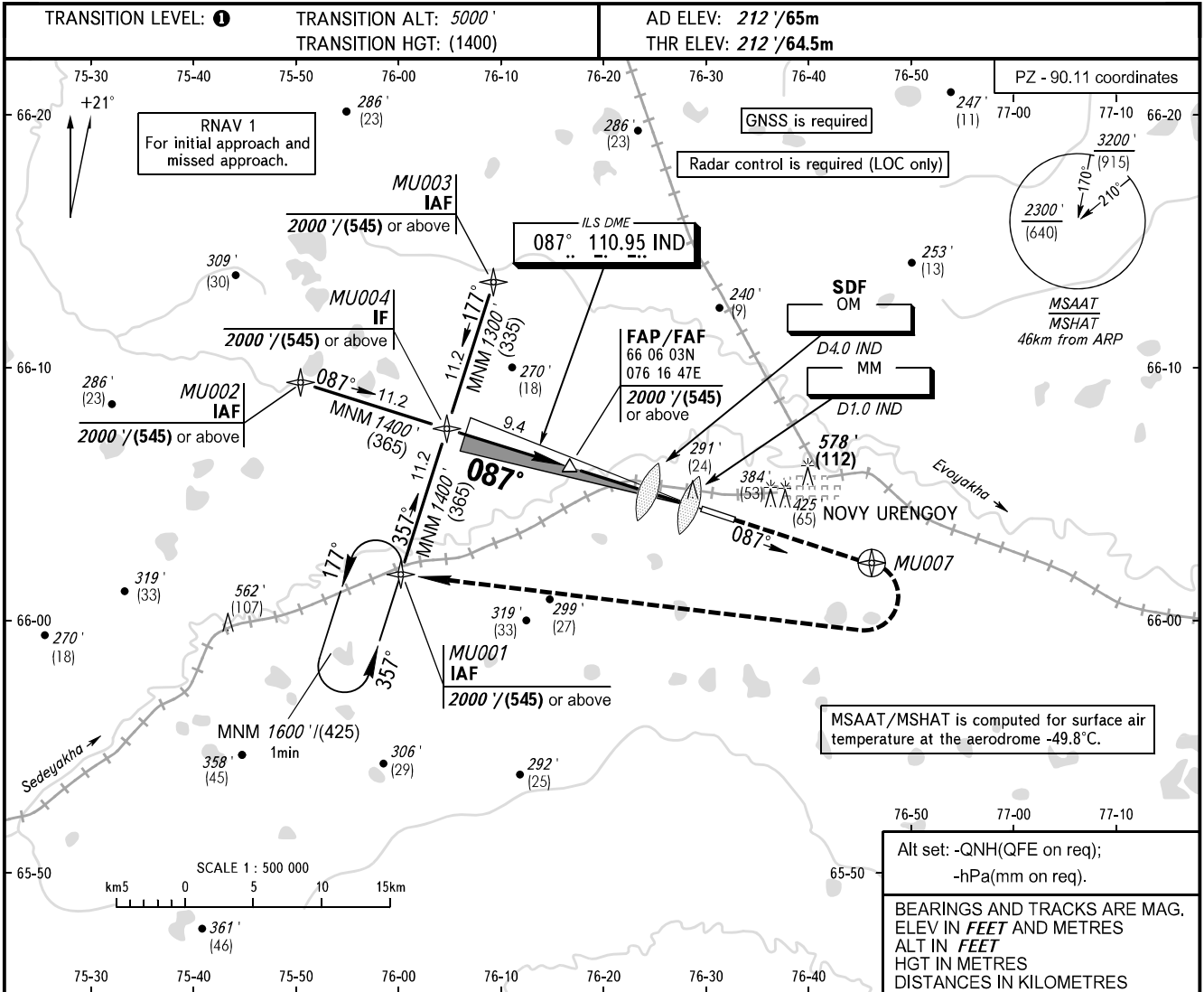


**INSTRUMENT
APPROACH
CHART - ICAO**

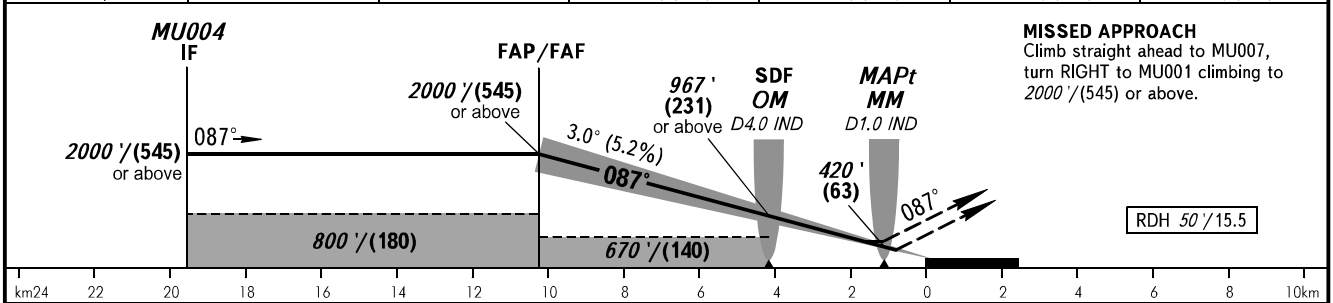
NOVY URENGOY, RUSSIA
NOVY URENGOY
ILS Z CAT I, LOC Z RWY 09

RADAR 124.700
TOWER 121.900



Alt set: -QN(H/QFE on req);
-hPa(mm on req).
BEARINGS AND TRACKS ARE MAG.
ELEV IN FEET AND METRES
ALT IN FEET
HGT IN METRES
DISTANCES IN KILOMETRES

| | | | | | | |
|-----------------|---------------|---------------|---------------|---------------|--------------|--------------|
| DME IND | 10.2 | 10.0 | 8.0 | 6.0 | 4.0 | 2.0 |
| ALTITUDE/HEIGHT | 2000' / (545) | 1982' / (539) | 1638' / (435) | 1294' / (330) | 950' / (225) | 606' / (120) |



| OCA(H) | | A | B | C | D | DL |
|----------------------|-----------------|-------------------------|-------------------------|-------------------------|-------------------------|-------------------------|
| Straight-in Approach | CAT I | 349' (136') 107(42) | 357' (144') 109(45) | 367' (154') 112(48) | 376' (163') 115(50) | 378' (165') 116(51) |
| | With SDF | 490' (280') 150(85) | 490' (280') 150(85) | 490' (280') 150(85) | 490' (280') 150(85) | 490' (280') 150(85) |
| | WO SDF | 670' (460') 205(140) | 670' (460') 205(140) | 670' (460') 205(140) | 670' (460') 205(140) | 670' (460') 205(140) |
| Circling | | 680' (470') 210(145) | 720' (510') 220(155) | 980' (760') 300(235) | 980' (760') 300(235) | 980' (760') 300(235) |

TRANSITION LEVEL:
- FL060 when QNH is 1013 hPa (760mm mercury column) or above;
- FL070 when QNH is 977 hPa (733mm mercury column) or above, but less than 1013 hPa (760mm mercury column);
- FL080 when QNH is less than 977 hPa (733mm mercury column).
WARNING:
1. MAPt at MM. Timing not authorized for defining MAPt.
2. Zero range of DME IND is indicated at RWY 09 THR.
3. Turn before MAPt is PROHIBITED.

| | | | | | | | | | | |
|-----------------|--------|-----|-----|-----|-----|-----|-----|-----|------|------|
| GROUND SPEED | km/h | 150 | 180 | 210 | 240 | 270 | 300 | 330 | 360 | 390 |
| | kt | 81 | 97 | 113 | 130 | 146 | 162 | 178 | 194 | 211 |
| RATE OF DESCENT | m/s | 2.2 | 2.6 | 3.1 | 3.5 | 3.9 | 4.4 | 4.8 | 5.2 | 5.7 |
| | ft/min | 430 | 516 | 602 | 688 | 774 | 860 | 946 | 1031 | 1117 |

CHANGE: COM