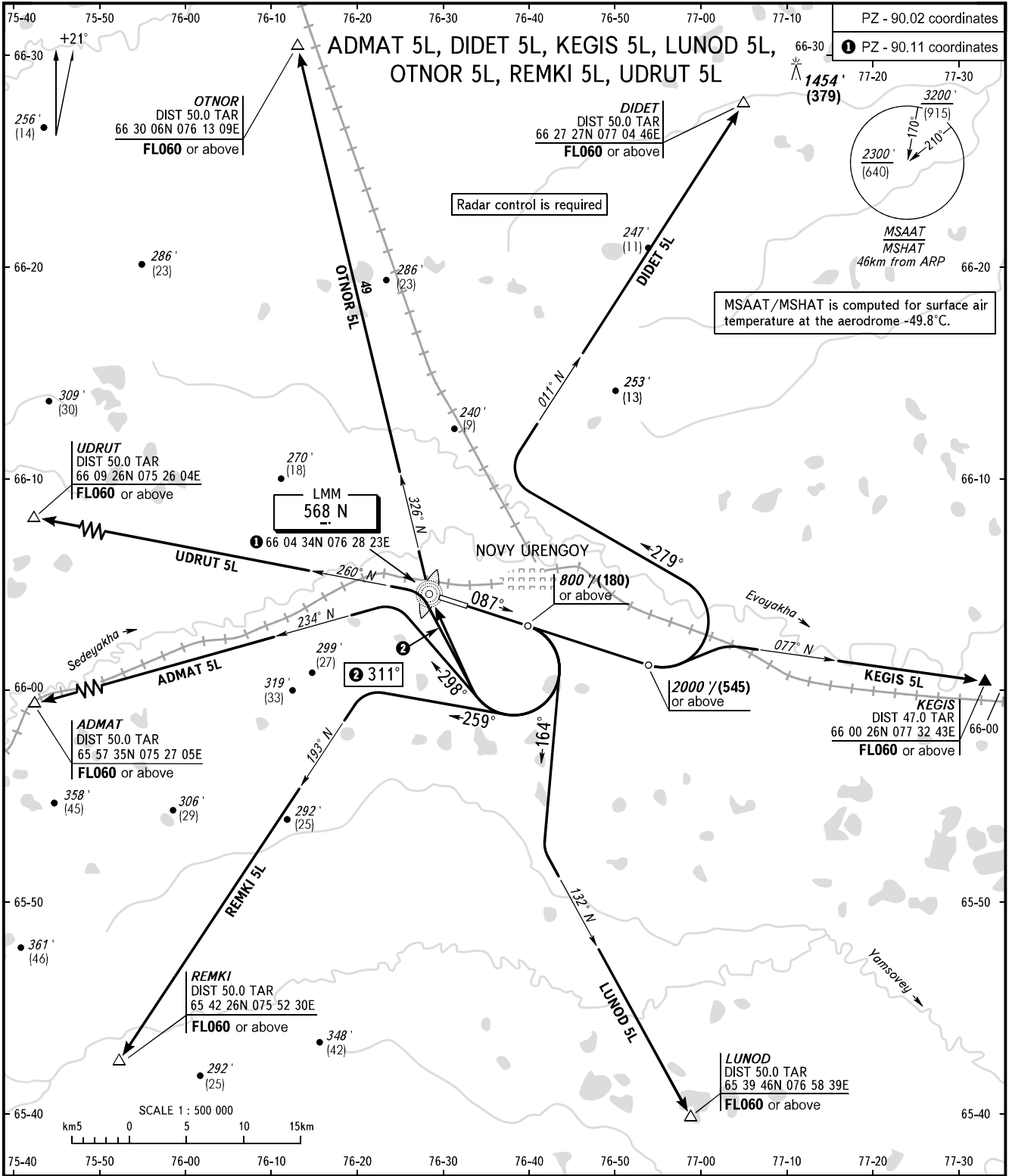


STANDARD DEPARTURE CHART
INSTRUMENT (SID) - ICAO

TRANSITION ALT: **5000'**
TRANSITION HGT: **(1400)**

NOVY URENGOY, RUSSIA
NOVY URENGOY
RWY 09



TOWER	121.900	WARNING: 1. The minimum climb gradients required due to the airspace structure: - 3.9% for SID KEGIS 5L up to FL060; - 3.5% for SID LUNOD 5L up to FL060. 2. Zero range of TAR is indicated at ARP.
RADAR	124.700	
BEARINGS AND TRACKS ARE MAGNETIC ALTITUDES IN FEET ELEVATIONS IN FEET AND METRES HEIGHTS IN METRES DISTANCES IN KILOMETRES		Alt set: -QNH(QFE on req); -hPa(mm on req).

CHANGE: COM