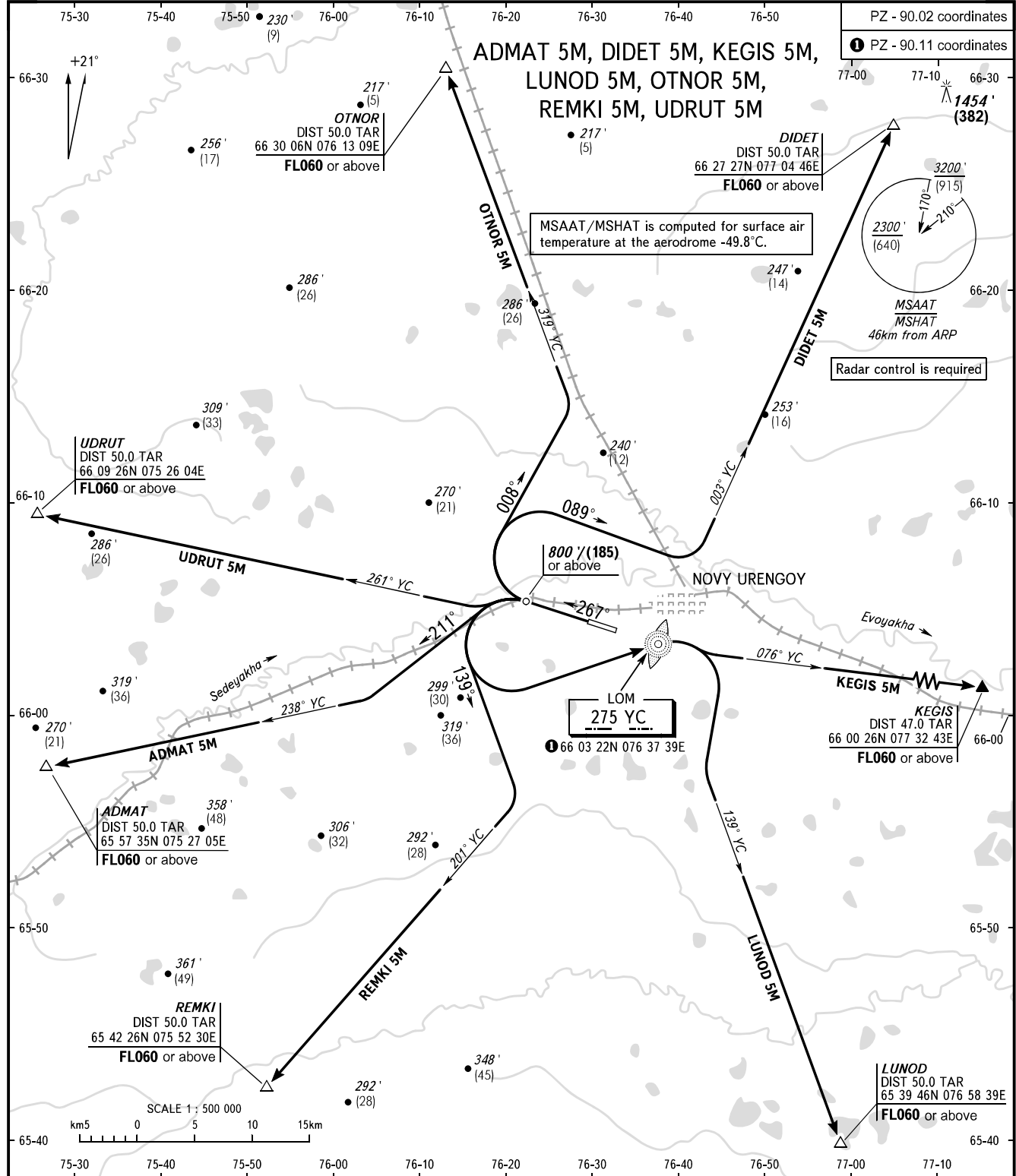


STANDARD DEPARTURE CHART
INSTRUMENT (SID) - ICAO

TRANSITION ALT: **5000'**
TRANSITION HGT: **(1400)**

NOVY URENGOY, RUSSIA
NOVY URENGOY
RWY 27



TOWER **121.900**
RADAR **124.700**

WARNING:
1. The minimum climb gradients required due to the airspace structure:
- 3.6% for SID ADMAT 5M up to FL060;
- 3.7% for SID UDRUT 5M up to FL060.
2. Zero range of TAR is indicated at ARP.

BEARINGS AND TRACKS ARE MAGNETIC
ALTITUDES IN FEET
ELEVATIONS IN FEET AND METRES
HEIGHTS IN METRES
DISTANCES IN KILOMETRES

Alt set: -QNH(QFE on req);
-hPa(mm on req).