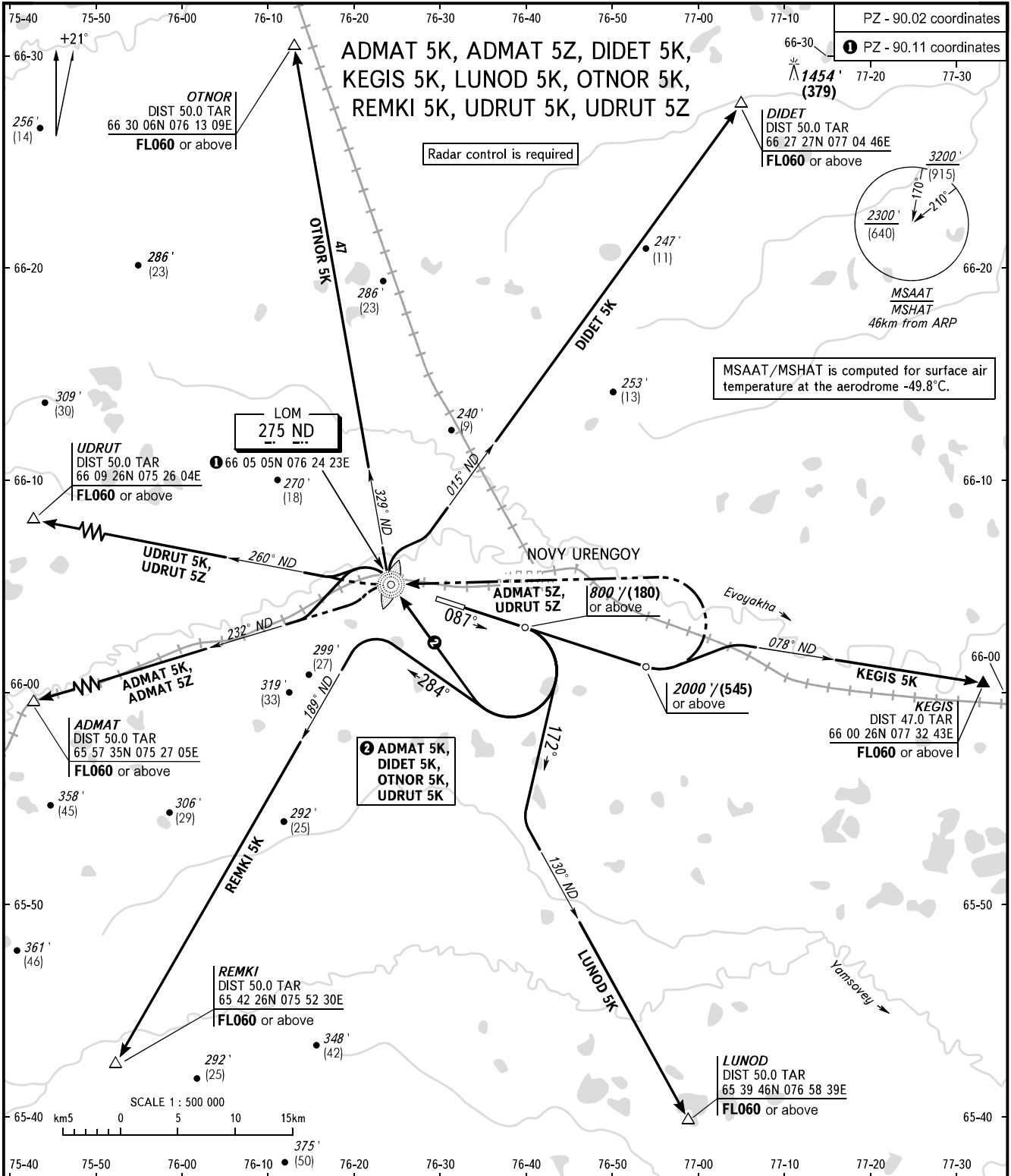


STANDARD DEPARTURE CHART
INSTRUMENT (SID) - ICAO

TRANSITION ALT: 5000'
TRANSITION HGT: (1400)

NOVY URENGOY, RUSSIA
NOVY URENGOY
RWY 09



TOWER 121.900
RADAR 124.700

- WARNING:**
- The minimum climb gradients required due to the airspace structure:
 - 3.9% for SID KEGIS 5K up to FL060;
 - 3.4% for SID LUNOD 5K up to FL060.
 - SID ADMAT 5Z, UDRUT 5Z shall be executed by coordination with ATC.
 - Zero range of TAR is indicated at ARP.

BEARINGS AND TRACKS ARE MAGNETIC
ALTITUDES IN FEET
ELEVATIONS IN FEET AND METRES
HEIGHTS IN METRES
DISTANCES IN KILOMETRES

Alt set: -QNH(QFE on req);
-hPa(mm on req).

CHANGE: COM