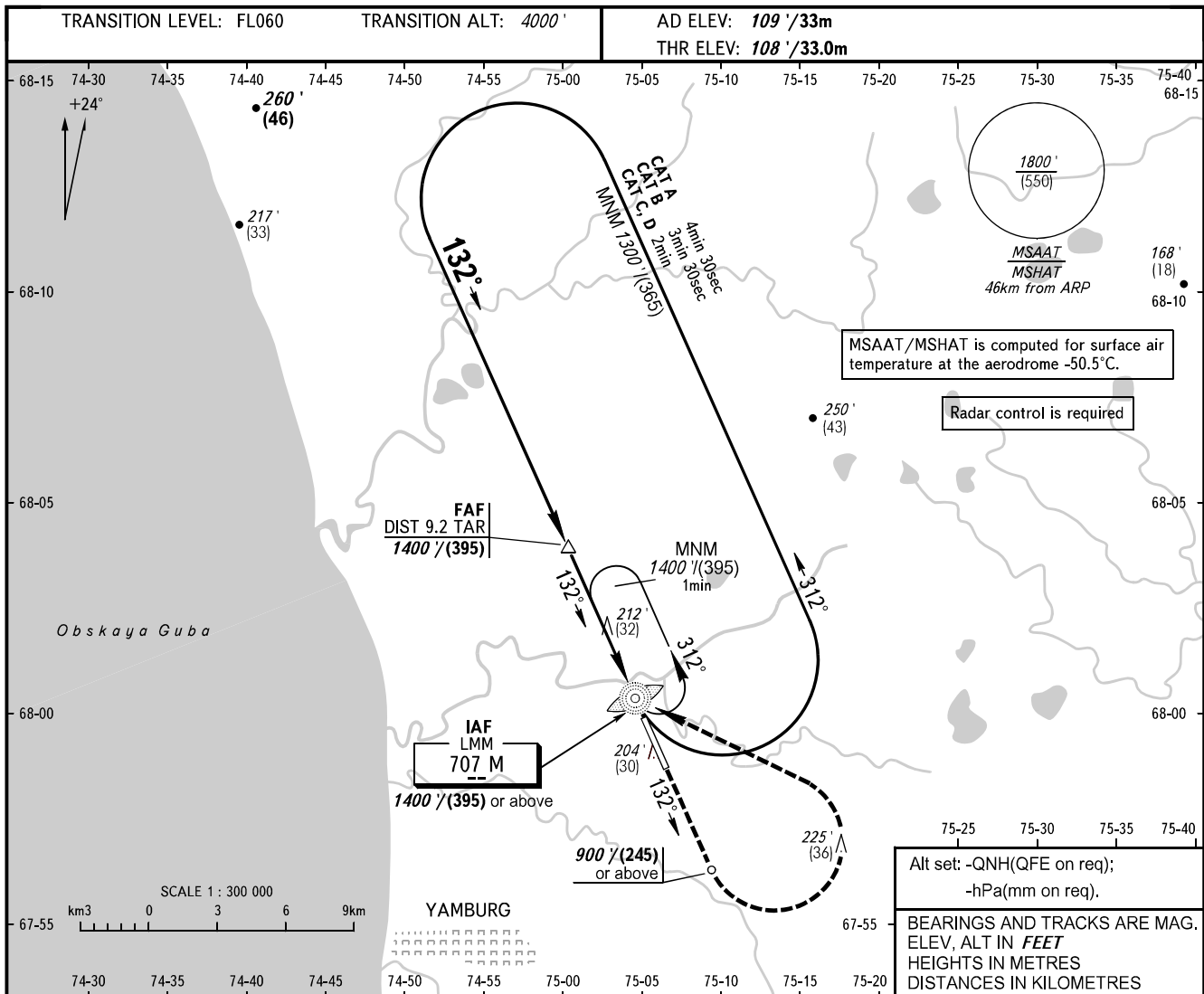


**INSTRUMENT  
APPROACH  
CHART - ICAO**

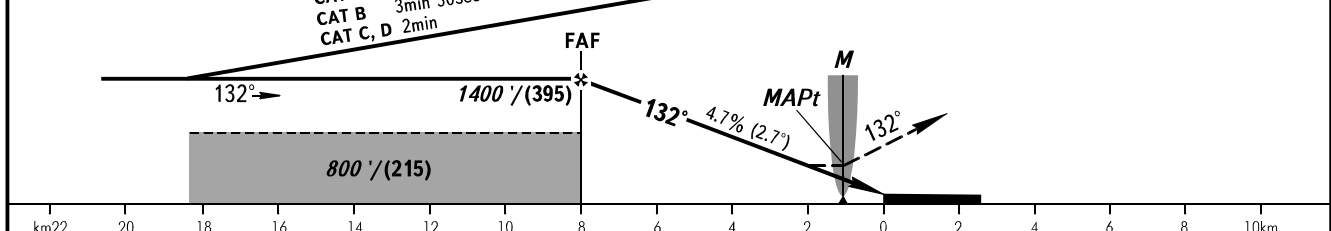
YAMBURG INFORMATION **122.900**

**YAMBURG, RUSSIA**  
YAMBURG  
NDB RWY 13



FAF is fixed by TAR (DIST 9.2)

**MISSED APPROACH**  
Climb on track 132° to 900' / (245) or above, turn LEFT to MAPt climbing to 1300' / (365) or above.



OCA(H)	A	B	C	D	<b>WARNING:</b>						
Straight-in Approach	460' (350') (110)	460' (350') (110)	460' (350') (110)	460' (350') (110)	1. When an ACFT is operating an IFR flight in Yamburg AFIS airspace, flights of HEL (light ACFT) within the area covered by a 10-km radius from ARP are PROHIBITED. 2. Turn before MAPt is PROHIBITED. 3. MAPt at LMM M.						
	510' (400') (125)	610' (500') (155)	700' (600') (185)	800' (690') (215)							
Circling											
GROUND SPEED	km/h	150	180	210	240	270	300	330	360	390	
FAF - MAPt 7000m	min:sec	2:49	2:21	2:01	1:46	1:34	1:24	1:17	1:10	1:05	
RATE OF DESCENT	m/s	2.0	2.4	2.7	3.1	3.5	3.9	4.3	4.7	5.1	
	ft/min	385	463	540	617	694	771	848	925	1002	