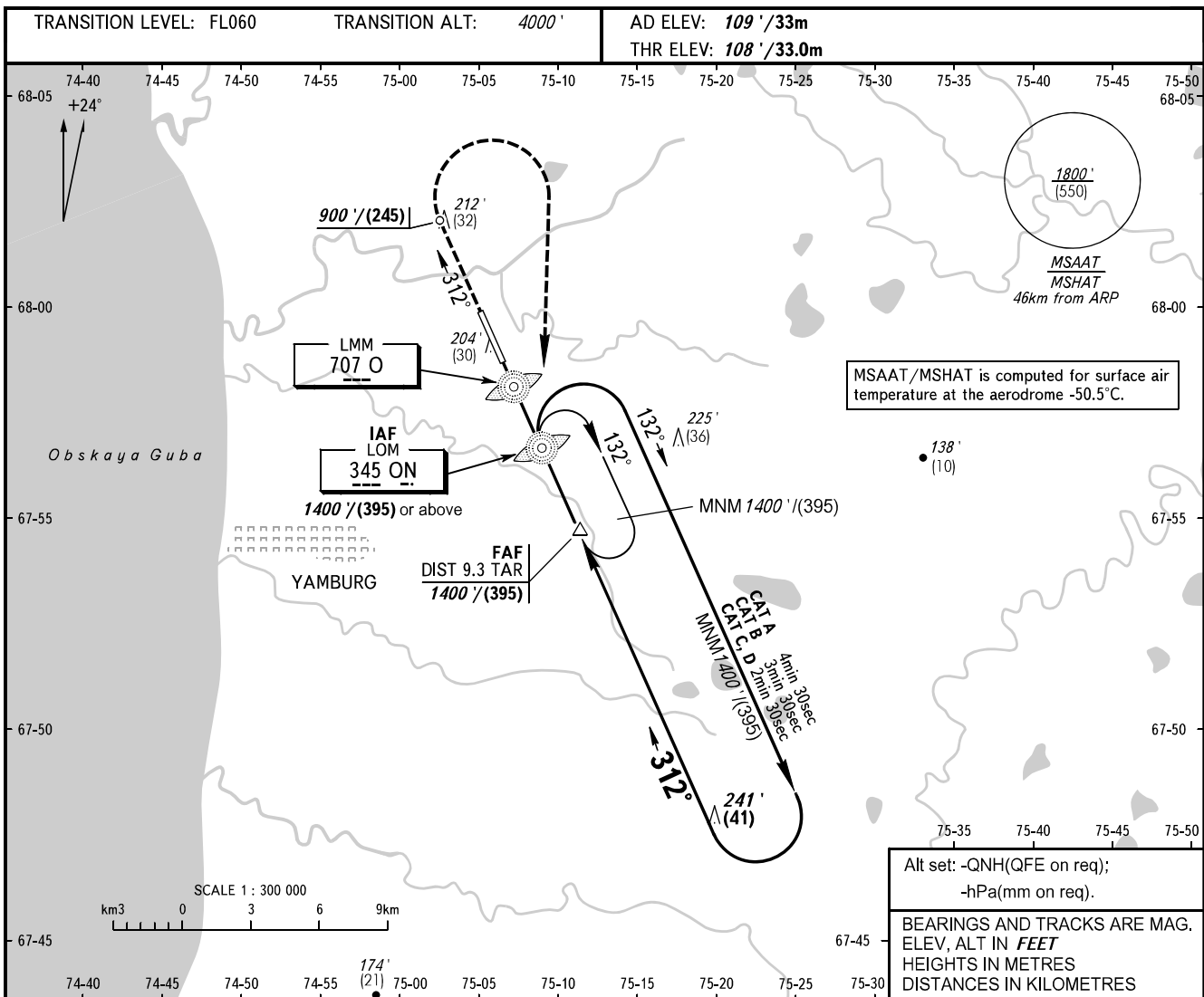


**INSTRUMENT  
APPROACH  
CHART - ICAO**

YAMBURG INFORMATION 122.900

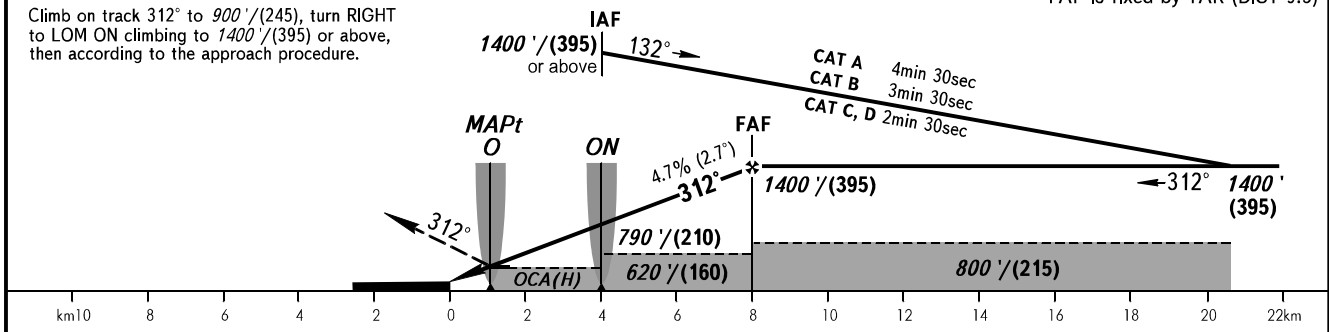
**YAMBURG, RUSSIA**  
YAMBURG  
2 NDB Z RWY 31



**MISSED APPROACH**

Climb on track 312° to 900' / (245), turn RIGHT to LOM ON climbing to 1400' / (395) or above, then according to the approach procedure.

FAF is fixed by TAR (DIST 9.3)



OCA(H)		A	B	C	D
Straight-in Approach		430' (330') (100)	430' (330') (100)	430' (330') (100)	430' (330') (100)
	Circling	510' (400') (125)	610' (500') (155)	700' (600') (185)	800' (690') (215)

**WARNING:**

- When an ACFT is operating an IFR flight in Yamburg AFIS airspace, flights of HEL (light ACFT) within the area covered by a 10-km radius from ARP are PROHIBITED.
- MAPt at LMM O. Timing not authorized for defining MAPt.

GROUND SPEED	km/h	150	180	210	240	270	300	330	360	390
RATE OF DESCENT	m/s	2.0	2.4	2.7	3.1	3.5	3.9	4.3	4.7	5.1
	ft/min	385	463	540	617	694	771	848	925	1002