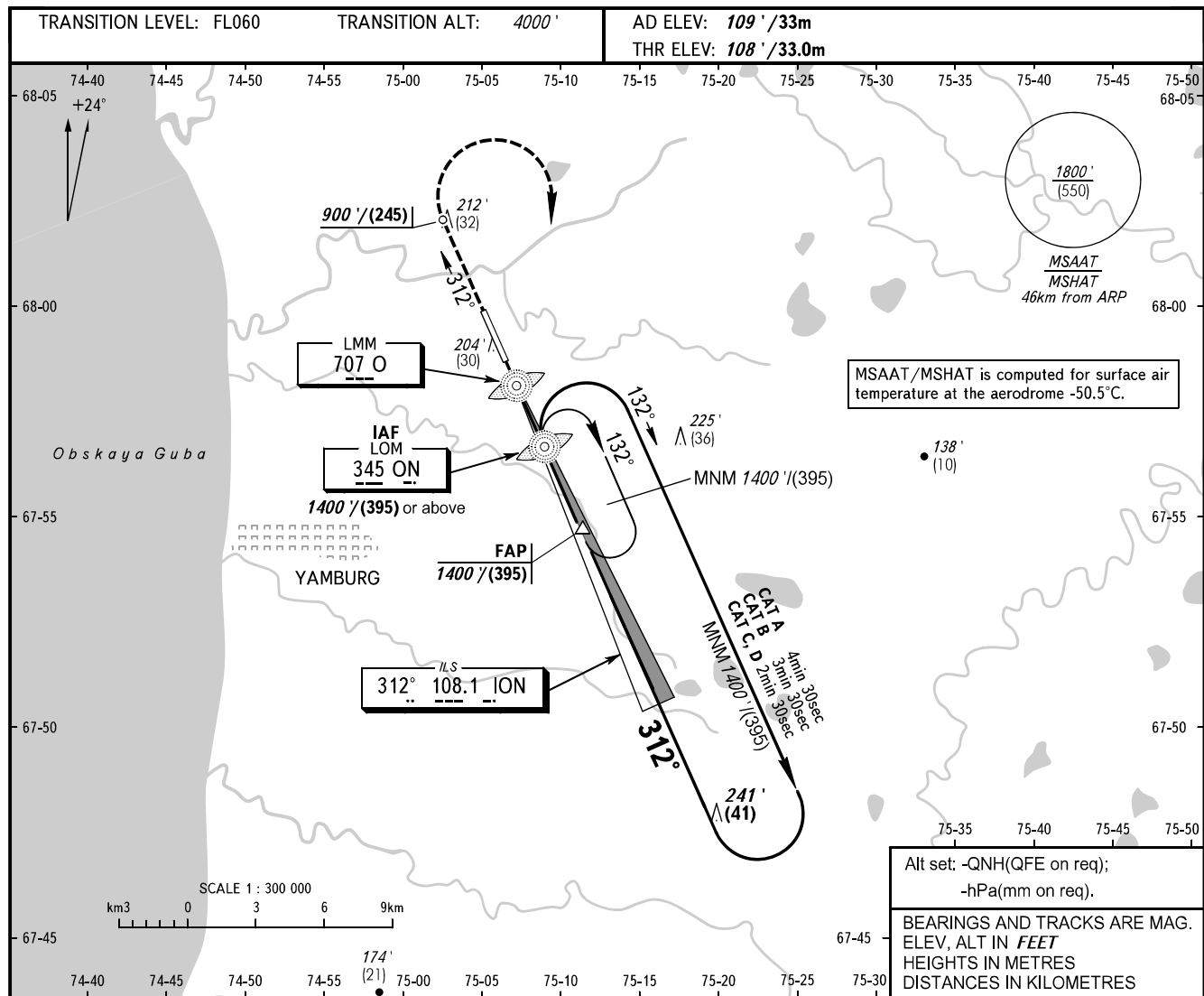


**INSTRUMENT  
APPROACH  
CHART - ICAO**

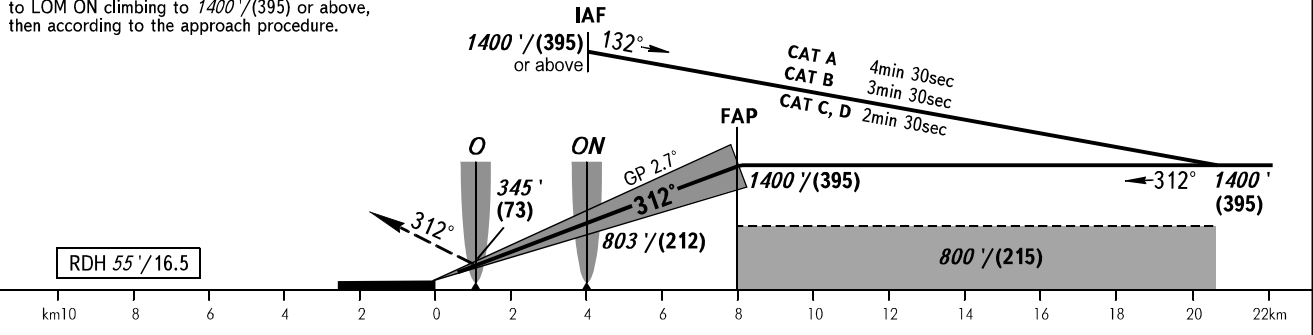
YAMBURG INFORMATION **122.900**

**YAMBURG, RUSSIA**  
YAMBURG  
ILS RWY 31



**MISSED APPROACH**

Climb on track 312° to 900' / (245), turn RIGHT to LOM ON climbing to 1400' / (395) or above, then according to the approach procedure.



OCA(H)	A	B	C	D	WARNING When an ACFT is operating an IFR flight in Yamburg AFIS airspace, flights of HEL (light ACFT) within the area covered by a 10-km radius from ARP are PROHIBITED.					
Straight-in Approach	258' (150') (46)	267' (159') (49)	278' (170') (52)	290' (182') (56)						
Circling	510' (400') (125)	610' (500') (155)	700' (600') (185)	800' (690') (215)						
GROUND SPEED	km/h	150	180	210	240	270	300	330	360	390
RATE OF DESCENT	m/s	2.0	2.4	2.7	3.1	3.5	3.9	4.3	4.7	5.1
	ft/min	385	463	540	617	694	771	848	925	1002