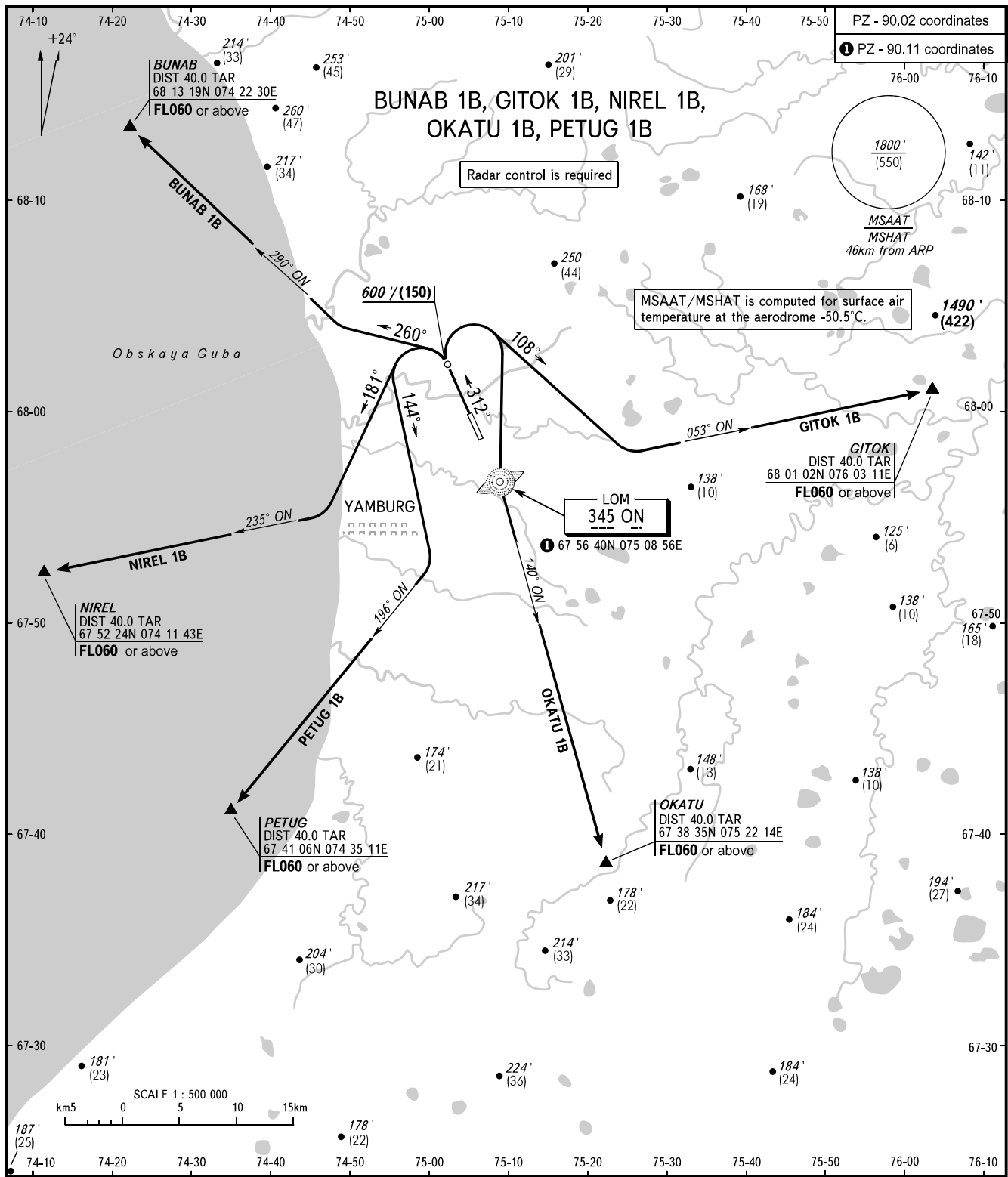


STANDARD DEPARTURE CHART
INSTRUMENT (SID) - ICAO

YAMBURG, RUSSIA
YAMBURG
RWY 31

TRANSITION ALT: 4000'



YAMBURG INFORMATION		122.900	<p>WARNING:</p> <ol style="list-style-type: none"> MNM climb gradients due to the airspace structure: <ul style="list-style-type: none"> - 4.9% up to FL060 for BUNAB 1B; - 4.1% up to FL060 for GITOK 1B; - 4.4% up to FL060 for NIREL 1B; - 4.2% up to FL060 for OKATU 1B; - 4.0% up to FL060 for PETUG 1B. Only one ACFT operating IFR flight can be present in Yamburg AFIS airspace. ACFT operating IFR flights have priority over other departing ACFT.
BEARINGS AND TRACKS ARE MAGNETIC ALTITUDES AND ELEVATIONS IN FEET HEIGHTS IN METRES DISTANCES IN KILOMETRES		Alt set: -QNH(QFE on req); -hPa(mm on req).	

CHANGE: MSAAT/MSHAT, heights, heading