

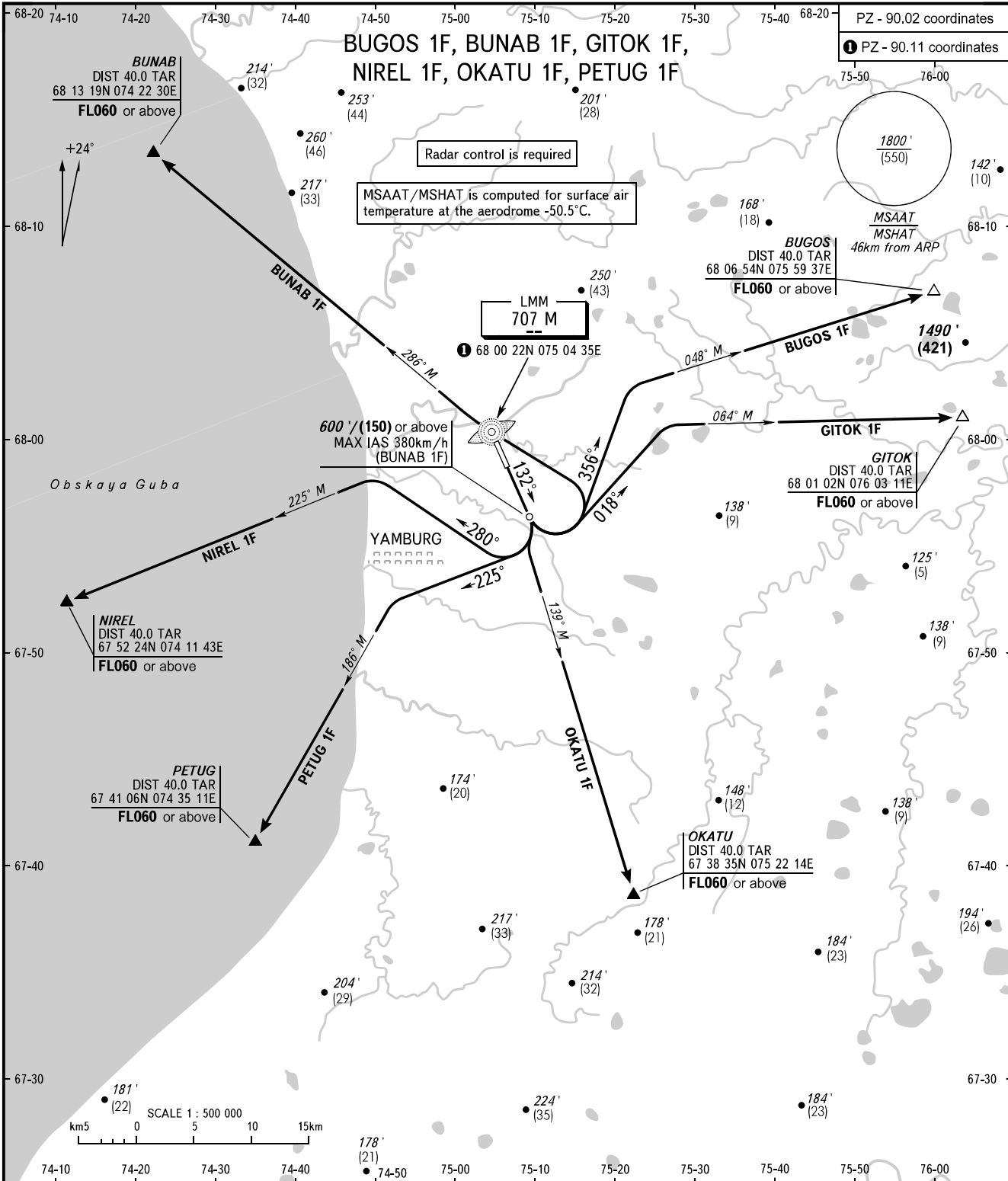
STANDARD DEPARTURE CHART
INSTRUMENT (SID) - ICAO

TRANSITION ALT: 4000'

YAMBURG, RUSSIA

YAMBURG

RWY 13



YAMBURG INFORMATION **122.900**

- WARNING:**
- MNM climb gradients due to the airspace structure:
 - 3.7% up to FL060 for BUGOS 1F;
 - 4.0% up to FL060 for GITOK 1F;
 - 3.6% up to FL060 for NIREL 1F;
 - 4.6% up to FL060 for OKATU 1F;
 - 4.2% up to FL060 for PETUG 1F.
 - Turn before passing DER is PROHIBITED.
 - Only one ACFT operating IFR flight can be present in Yamburg AFIS airspace.
 - ACFT operating IFR flights have priority over other departing ACFT.

BEARINGS AND TRACKS ARE MAGNETIC
ALTITUDES AND ELEVATIONS IN FEET
HEIGHTS IN METRES
DISTANCES IN KILOMETRES

Alt set: -QNH(QFE on req);
-hPa(mm on req).