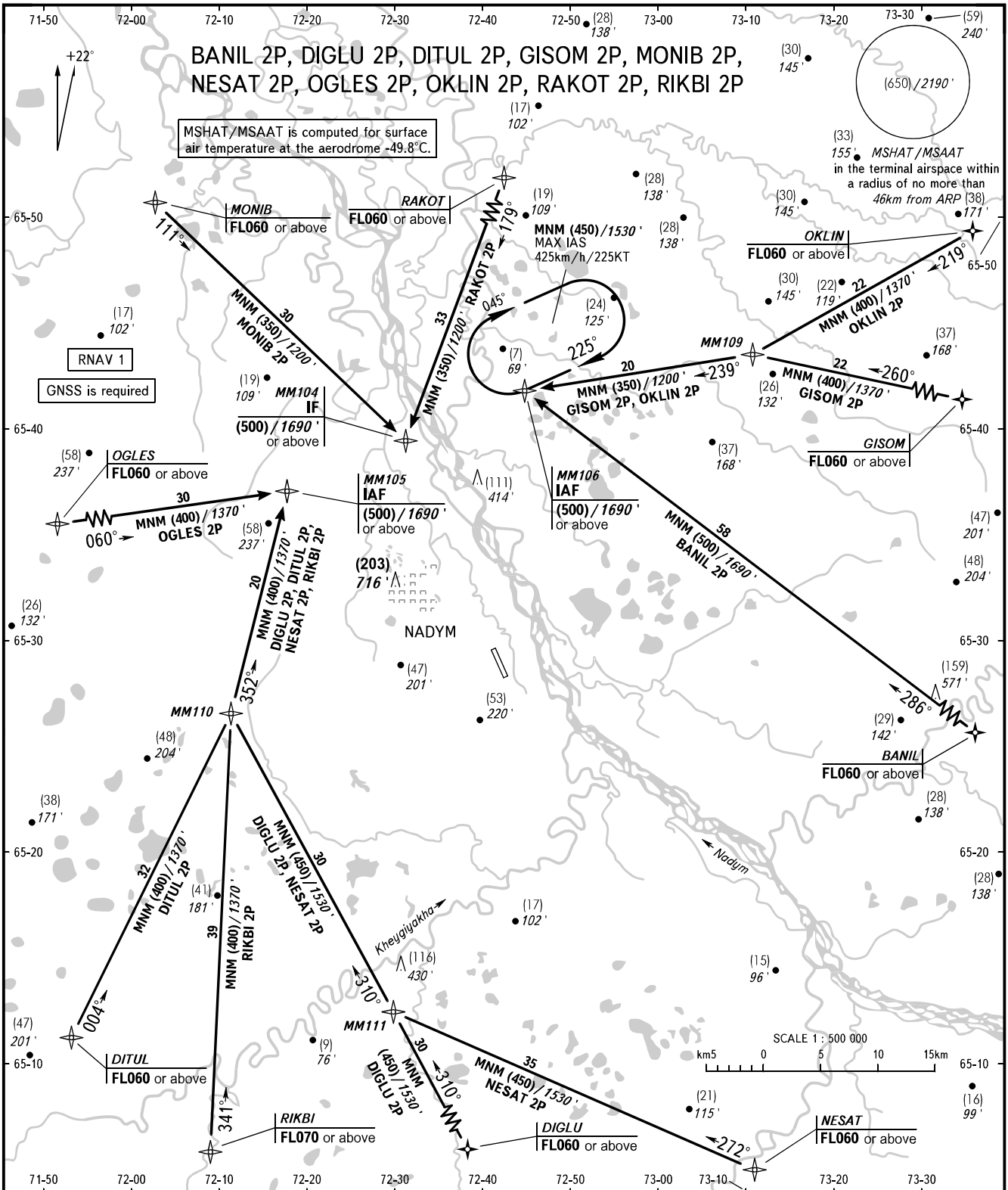


STANDARD ARRIVAL CHART
INSTRUMENT (STAR) - ICAO

NADYM, RUSSIA
NADYM
RNAV RWY 14

TRANSITION
LEVEL : **1**



RADAR	135.400
START	120.600
BEARINGS AND TRACKS ARE MAGNETIC ALTITUDES IN FEET, HEIGHTS IN METRES ELEVATIONS IN METRES AND FEET DISTANCES IN KILOMETRES	
Alt set: -QFE(QNH on req); -mm(hPa on req).	

1 TRANSITION LEVEL:
- FL040 when QFE is 751mm mercury column or above (1001 hPa);
- FL050 when QFE is less than 751mm mercury column (1001 hPa).

NOTE:

1. Flight crew shall consider the influence of wind and atmospheric pressure when calculating descent profile.
2. CDO are applied if there is no conflicting traffic.
3. CDO can be cancelled by ATS unit in case of necessity to provide separation.
4. In case of intensive air traffic, ATS unit will issue next clearance to provide CDO in advance, as far as practicable.

CHANGE: COM, TL