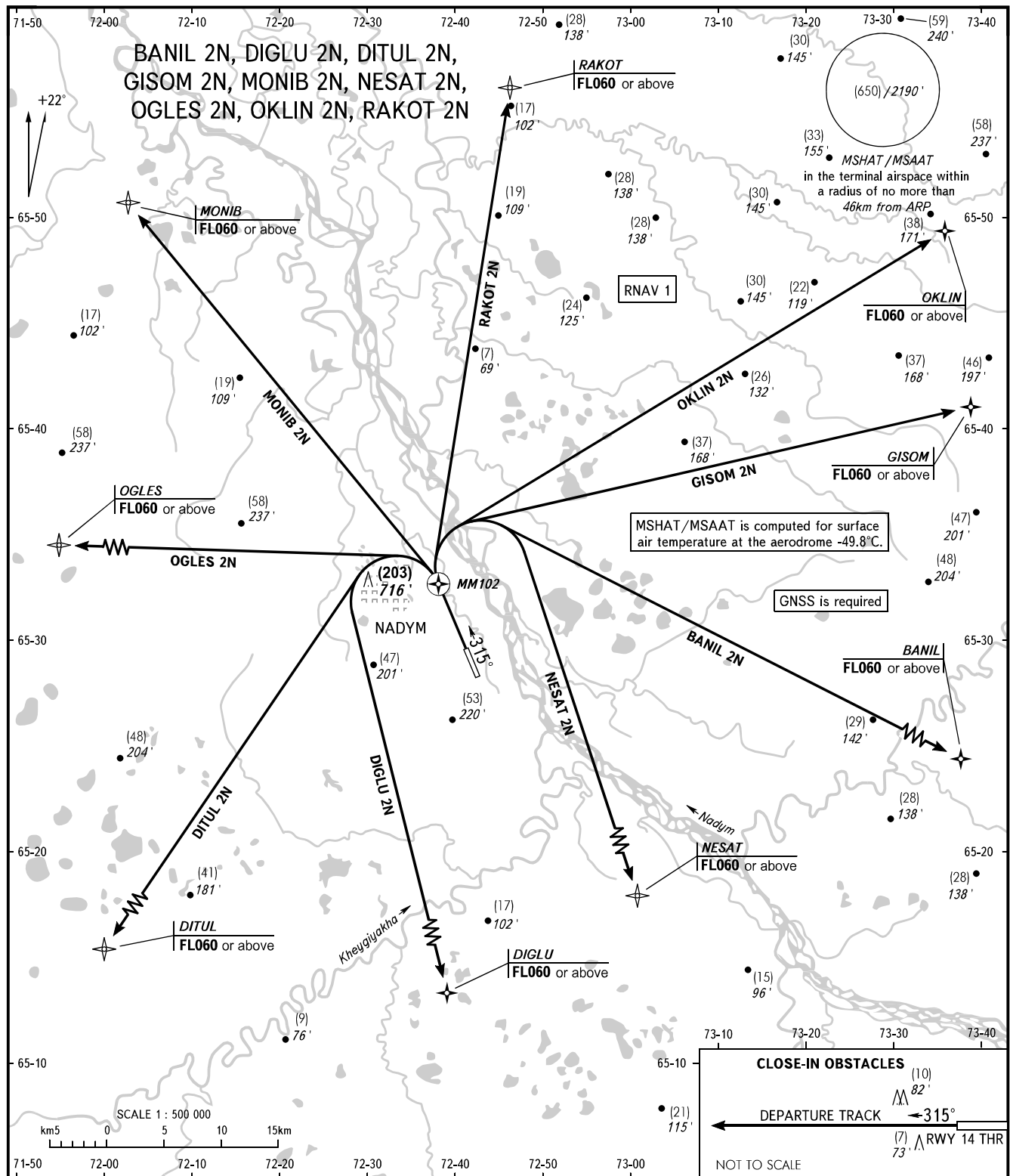


STANDARD DEPARTURE CHART  
INSTRUMENT (SID) - ICAO

NADYM, RUSSIA  
NADYM  
RNAV RWY 32

TRANSITION HEIGHT : (800)  
TRANSITION ALTITUDE: 2670'



START 120.600  
RADAR 135.400

**WARNING**  
The minimum climb gradients are as follows (required due to the airspace structure):  
- 3.5% up to FL060 for OGLES 2N;  
- 3.7% up to FL060 for RAKOT 2N;  
- 3.8% up to FL060 for MONIB 2N.

**NOTE:**  
1. CCO is applicable in case of low air traffic intensity.  
2. Rate of climb may be assigned to flight crews to provide CCO in case of high air traffic intensity.  
3. ATS unit uses "Direct to" procedure for the purpose of CCO.  
4. In case of high air traffic intensity, CCO is applicable where practicable.

BEARINGS AND TRACKS ARE MAGNETIC  
ALTITUDES IN FEET, HEIGHTS IN METRES  
ELEVATIONS IN METRES AND FEET  
DISTANCES IN KILOMETRES

Alt set: -QFE(QNH on req);  
-mm(hPa on req).