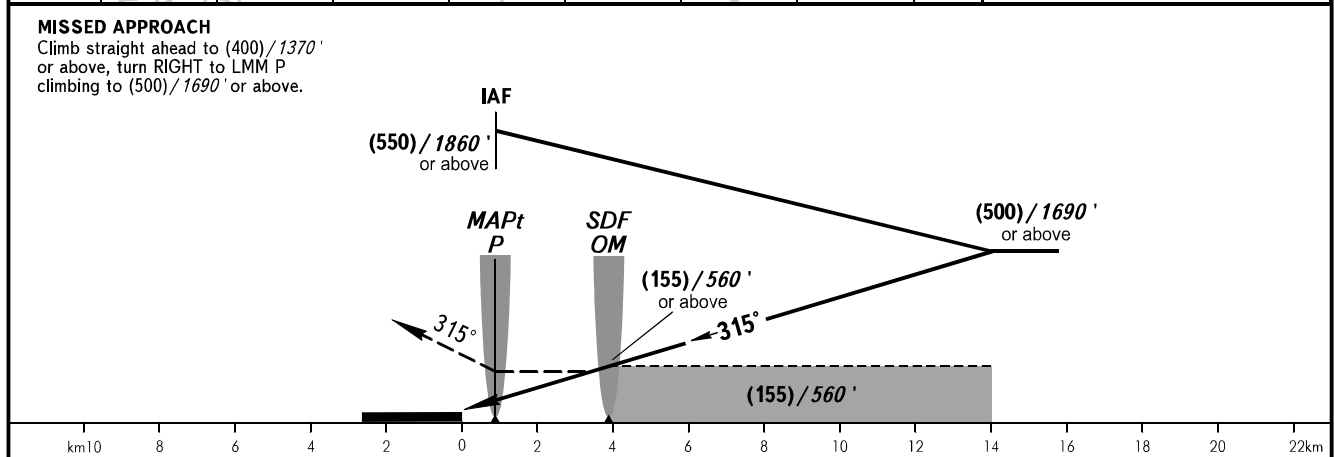
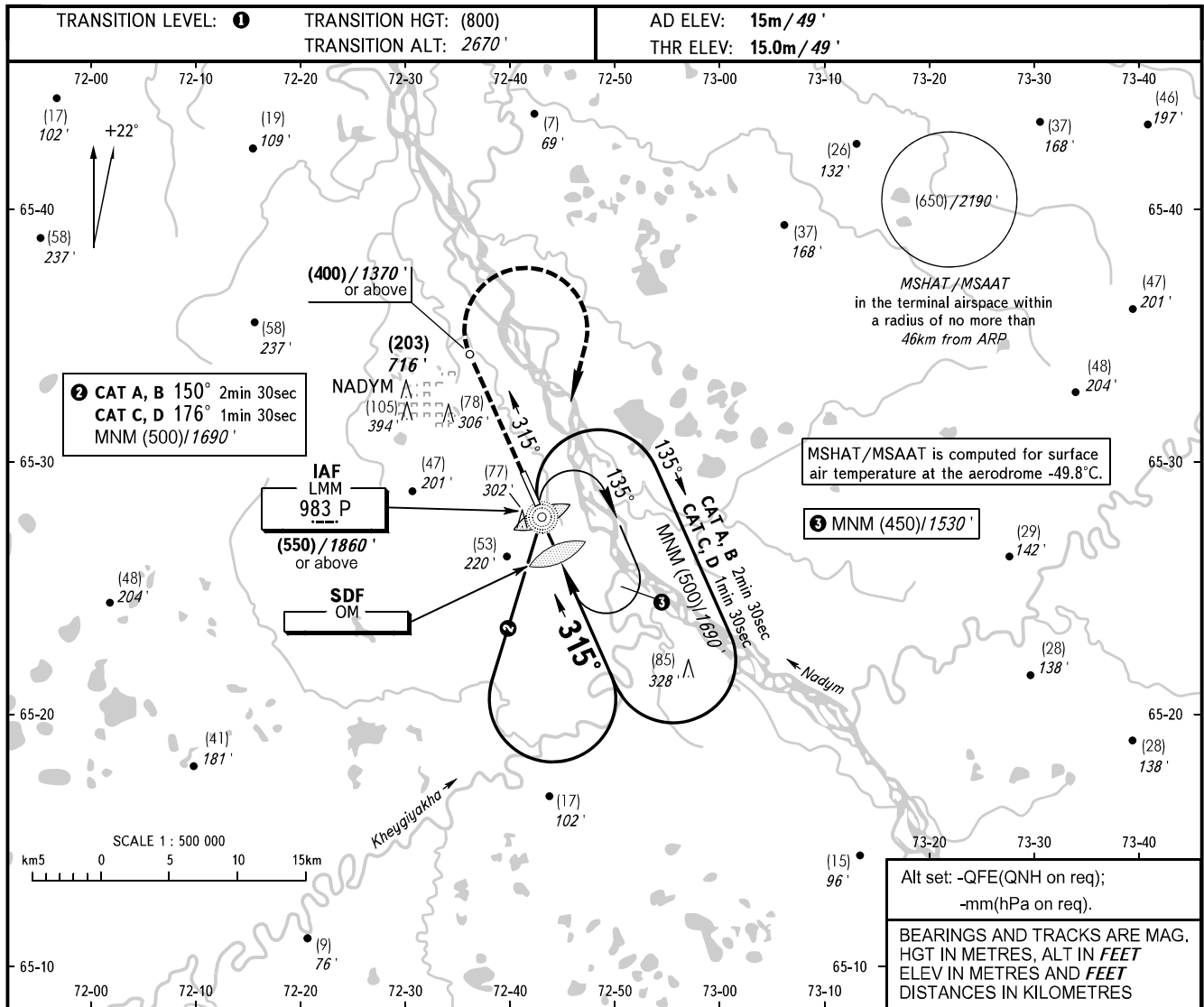


**INSTRUMENT
APPROACH
CHART - ICAO**

RADAR	135.400
START	120.600

**NADYM, RUSSIA
NADYM
NDB X RWY 32**



OCA(H)		A	B	C	D
Straight-in Approach	With SDF	150(135) 500'	150(135) 500'	150(135) 500'	150(135) 500'
	WO SDF	170(155) 560'	170(155) 560'	170(155) 560'	170(155) 560'
Circling		185(170) 610'	185(170) 610'	215(200) 710'	240(225) 790'

1 TRANSITION LEVEL:
- FL040 when QFE is 751mm mercury column or above (1001 hPa);
- FL050 when QFE is less than 751mm mercury column (1001 hPa).
NOTE
Turn before passing MAPt is PROHIBITED.