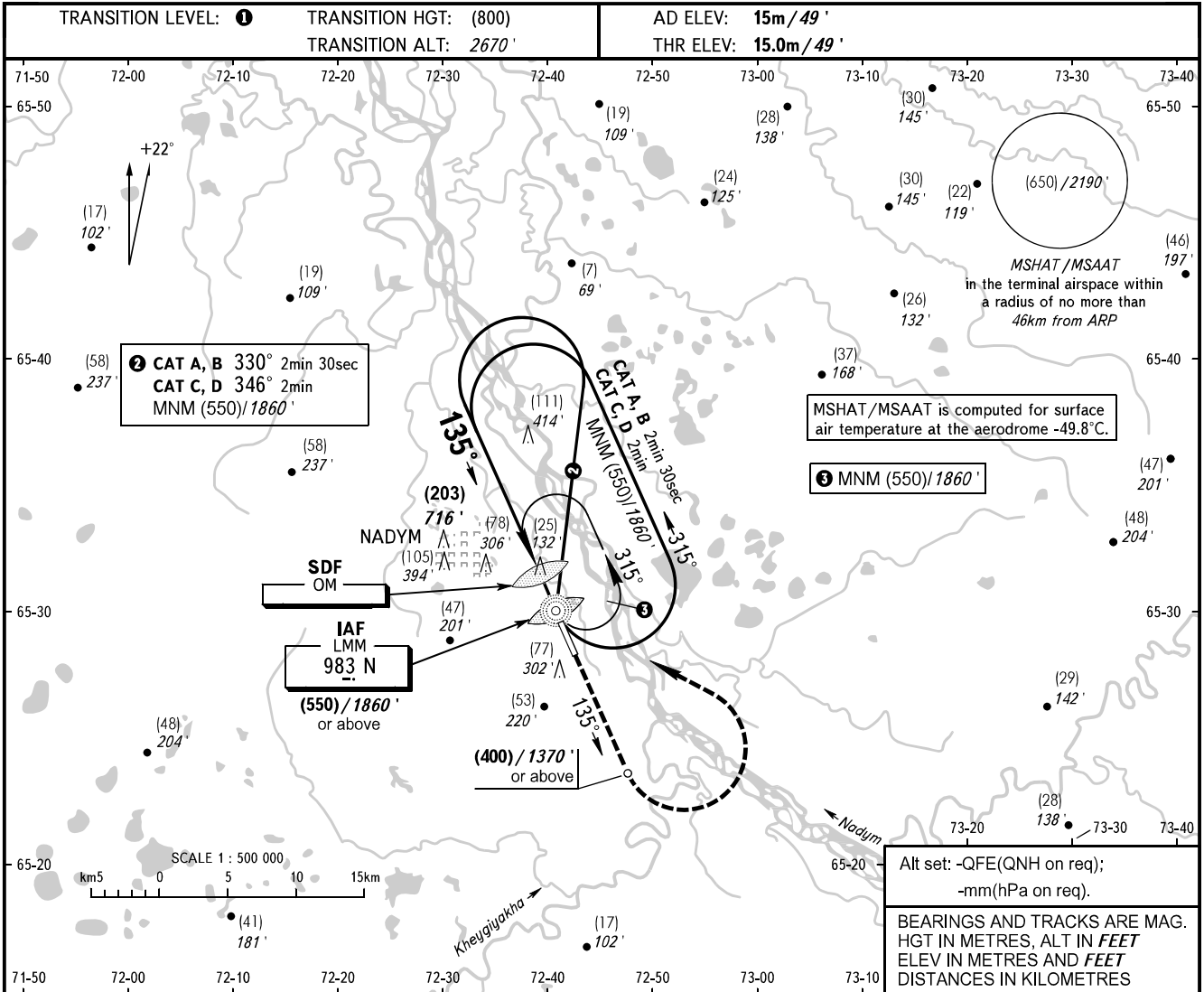


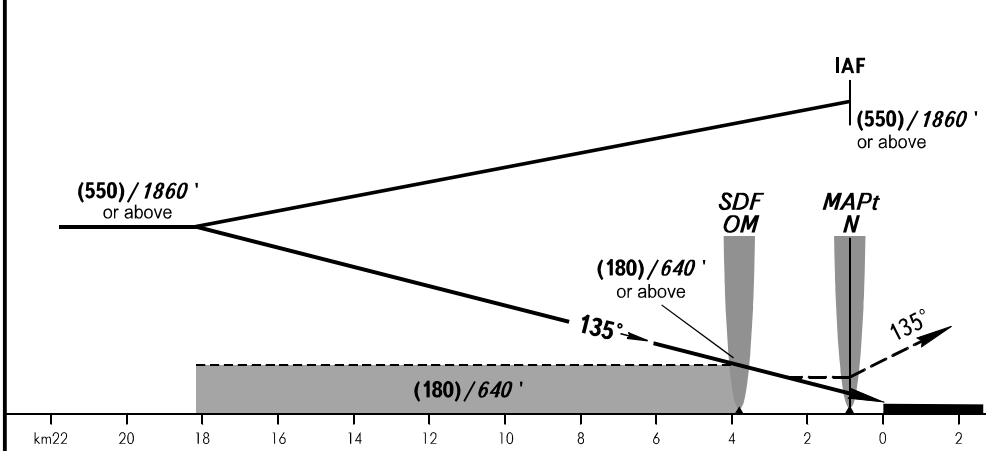
**INSTRUMENT
APPROACH
CHART - ICAO**

NADYM, RUSSIA
NADYM
NDB X RWY 14

RADAR	135.400
START	120.600



MISSED APPROACH
Climb straight ahead to (400) / 1370' or above, turn LEFT to LMM N climbing to (550) / 1860' or above.



OCA(H)		A	B	C	D
Straight-in Approach	With SDF	115(100) 380'	115(100) 380'	115(100) 380'	115(100) 380'
	WO SDF	195(180) 640'	195(180) 640'	195(180) 640'	195(180) 640'
Circling		195(180) 640'	195(180) 640'	215(200) 710'	240(225) 790'

① TRANSITION LEVEL:
- FL040 when QFE is 751mm mercury column or above (1001 hPa);
- FL050 when QFE is less than 751mm mercury column (1001 hPa).
NOTE
Turn before passing MAPt is PROHIBITED.

CHANGE: COM