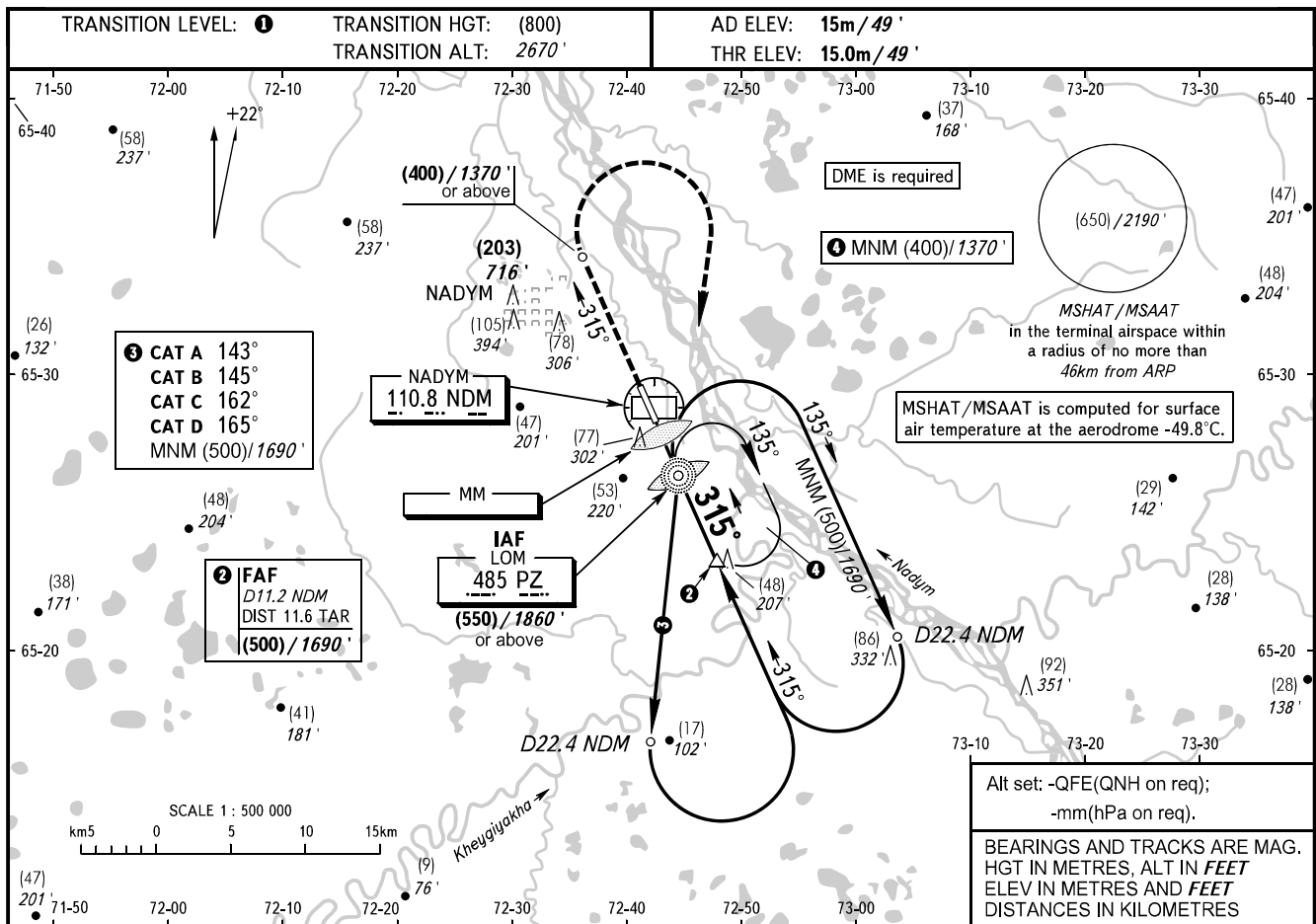


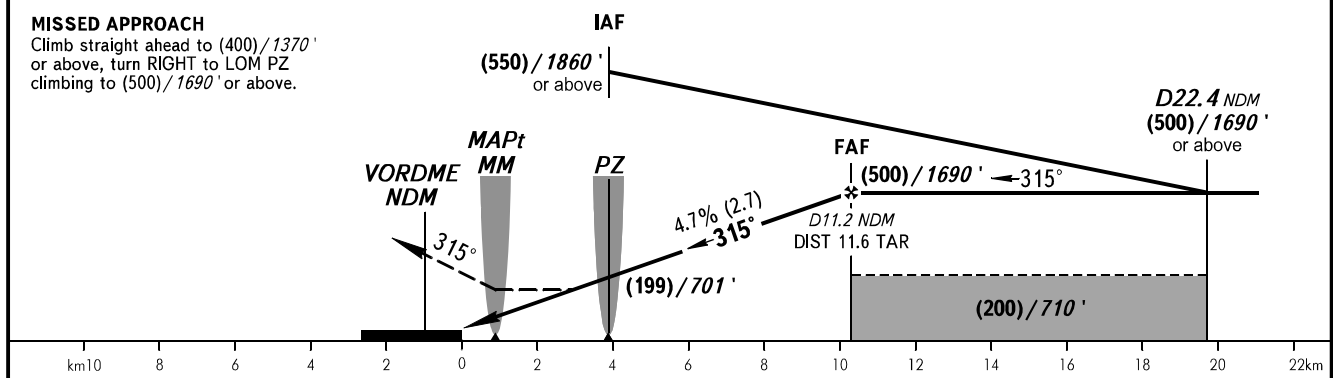
INSTRUMENT  
APPROACH  
CHART - ICAO

RADAR START 135.400  
START 120.600

NADYM, RUSSIA  
NADYM  
NDB Y RWY 32



DME NDM	4.0	6.0	8.0	10.0	11.2
HEIGHT/ALTITUDE	(158)/568'	(253)/878'	(347)/1188'	(441)/1497'	(500)/1690'



OCA(H)	A	B	C	D
Straight-in Approach	155(140) 510'	155(140) 510'	155(140) 510'	155(140) 510'
Circling	185(170) 610'	185(170) 610'	215(200) 710'	240(225) 790'

**1** TRANSITION LEVEL:  
- FL040 when QFE is 751mm mercury column or above (1001 hPa);  
- FL050 when QFE is less than 751mm mercury column (1001 hPa).  
**NOTE:**  
1. Turn before passing MAPt is PROHIBITED.  
2. MAPt at MM. Timing not authorized for defining MAPt.  
3. TAR distance is indicated from ARP.

GROUND SPEED	km/h	150	180	210	240	270	300	330	360	390
	kt	81	97	113	130	146	162	178	194	211
RATE OF DESCENT	m/s	2.0	2.4	2.8	3.1	3.5	3.9	4.3	4.7	5.1
	ft/min	387	464	542	619	696	774	851	928	1006