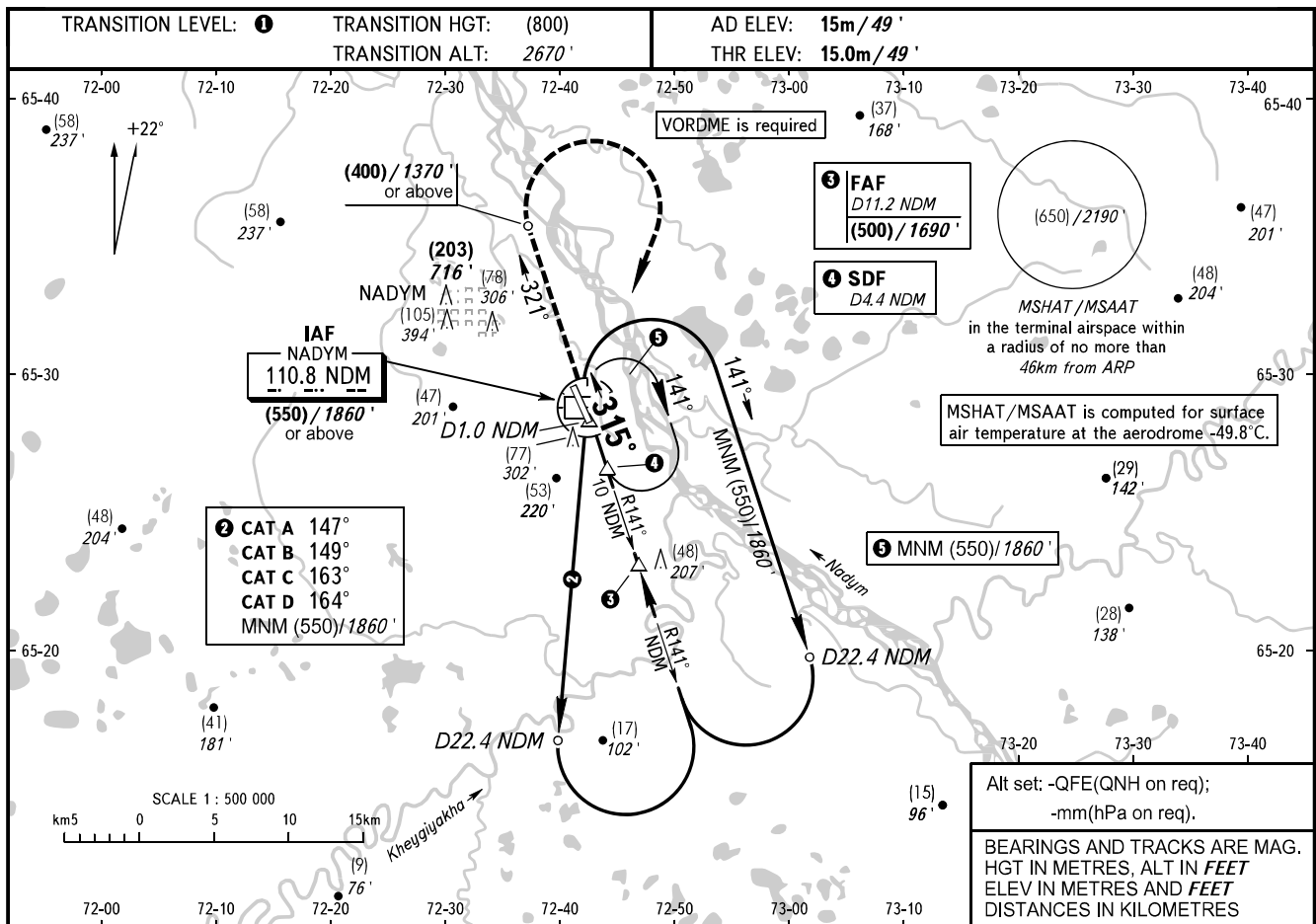


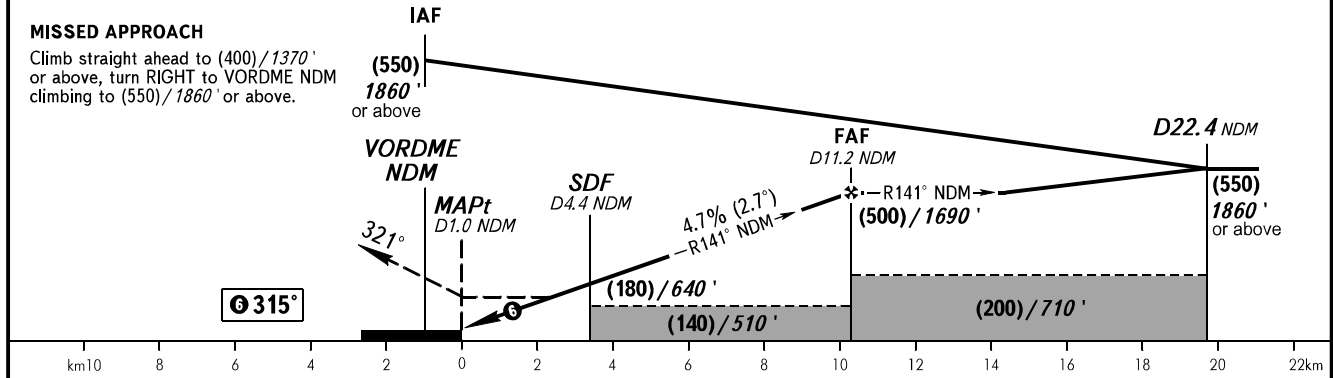
INSTRUMENT
APPROACH
CHART - ICAO

NADYM, RUSSIA
NADYM
VOR RWY 32

RADAR START 135.400
START 120.600



DME NDM	4.0	6.0	8.0	10.0	11.2
HEIGHT/ALTITUDE	(158) / 568'	(253) / 878'	(347) / 1188'	(441) / 1497'	(500) / 1690'



OCA(H)		A	B	C	D
Straight-in Approach	With SDF	150(135) 500'	150(135) 500'	150(135) 500'	150(135) 500'
	WO SDF	155(140) 510'	155(140) 510'	155(140) 510'	155(140) 510'
Circling		185(170) 610'	185(170) 610'	215(200) 710'	240(225) 790'

① TRANSITION LEVEL:
- FL040 when QFE is 751mm mercury column or above (1001 hPa);
- FL050 when QFE is less than 751mm mercury column (1001 hPa).
NOTE:
1. MAPt at D1.0 NDM. Timing not authorized for defining MAPt.
2. Turn before passing MAPt is PROHIBITED.
3. Final approach track is offset by 6° from the RWY centre line.

GROUND SPEED	km/h	150	180	210	240	270	300	330	360	390
	kt	81	97	113	130	146	162	178	194	211
RATE OF DESCENT	m/s	2.0	2.4	2.8	3.1	3.5	3.9	4.3	4.7	5.1
	ft/min	387	464	542	619	696	774	851	928	1006