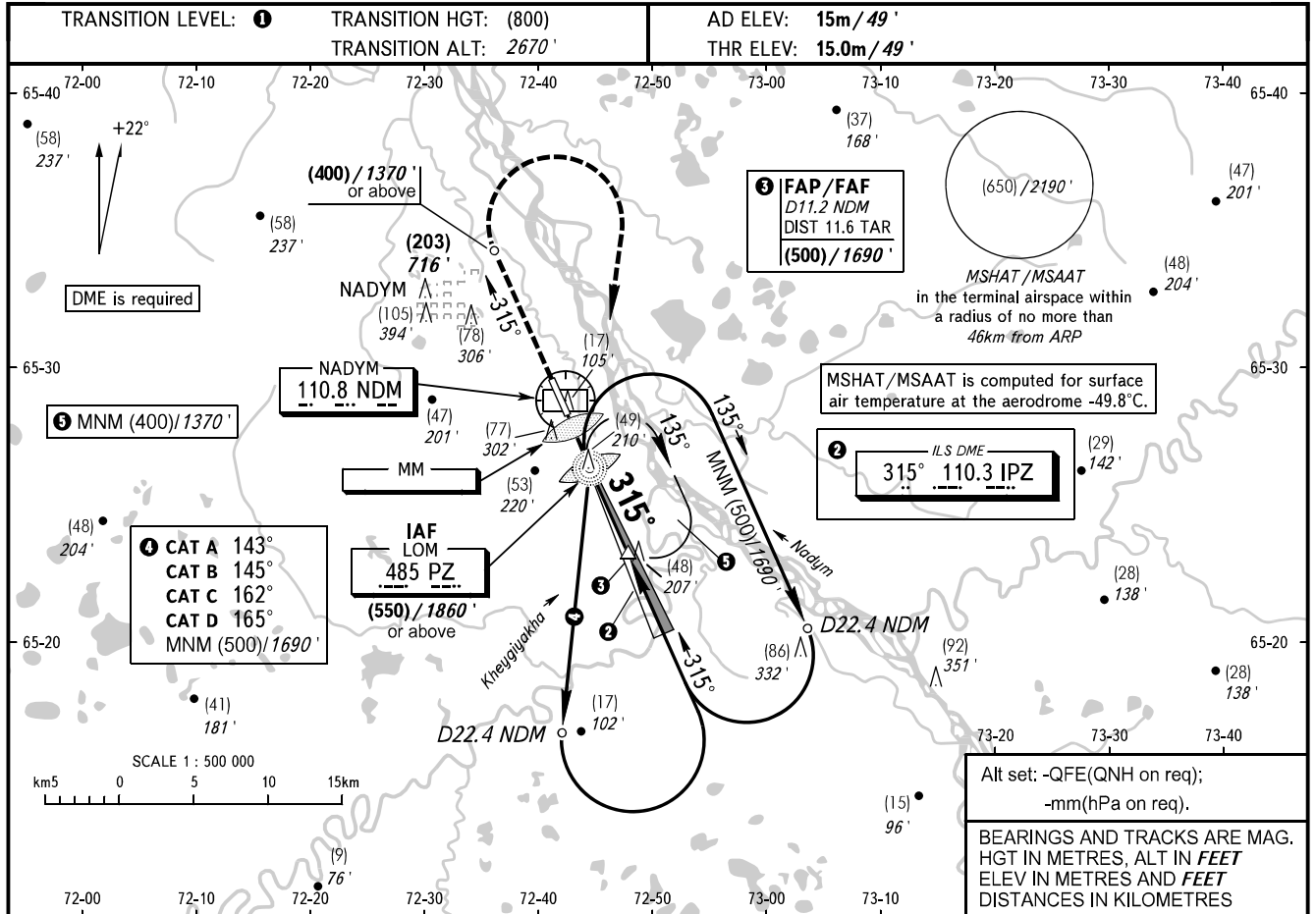


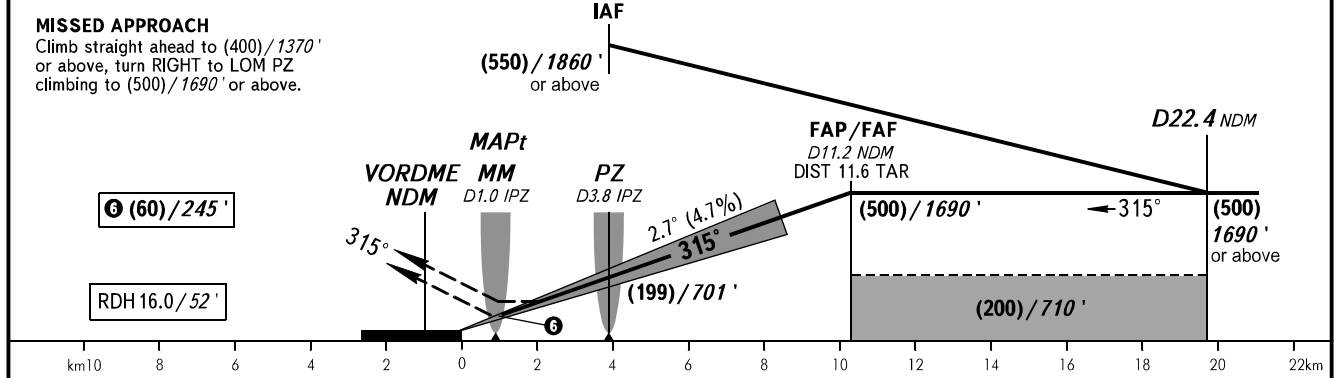
**INSTRUMENT  
APPROACH  
CHART - ICAO**

RADAR START **135.400**  
START **120.600**

**NADYM, RUSSIA**  
NADYM  
ILS Y CAT I, LOC Y RWY 32



DME NDM	4.0	6.0	8.0	10.0	11.2
HEIGHT/ALTITUDE	(158) / 568'	(253) / 878'	(347) / 1188'	(441) / 1497'	(500) / 1690'



OCA(H)		A	B	C	D
Straight-in Approach	<b>CAT I</b>	58(43) 191'	61(46) 201'	64(49) 210'	68(53) 224'
	<b>LOC</b>	140(125) 460'	140(125) 460'	140(125) 460'	140(125) 460'
Circling		185(170) 610'	185(170) 610'	215(200) 710'	240(225) 790'

**① TRANSITION LEVEL:**  
- FL040 when QFE is 751mm mercury column or above (1001 hPa);  
- FL050 when QFE is less than 751mm mercury column (1001 hPa).  
**NOTE:**  
1. ILS DME IPZ reads zero at RWY 32 THR.  
2. TAR distance is indicated from ARP.  
3. MAPt at MM (LOC). Timing not authorized for defining MAPt.  
4. Turn before passing MAPt is PROHIBITED.

GROUND SPEED	km/h	150	180	210	240	270	300	330	360	390
	kt	81	97	113	130	146	162	178	194	211
RATE OF DESCENT	m/s	2.0	2.4	2.8	3.1	3.5	3.9	4.3	4.7	5.1
	ft/min	387	464	542	619	696	774	851	928	1006