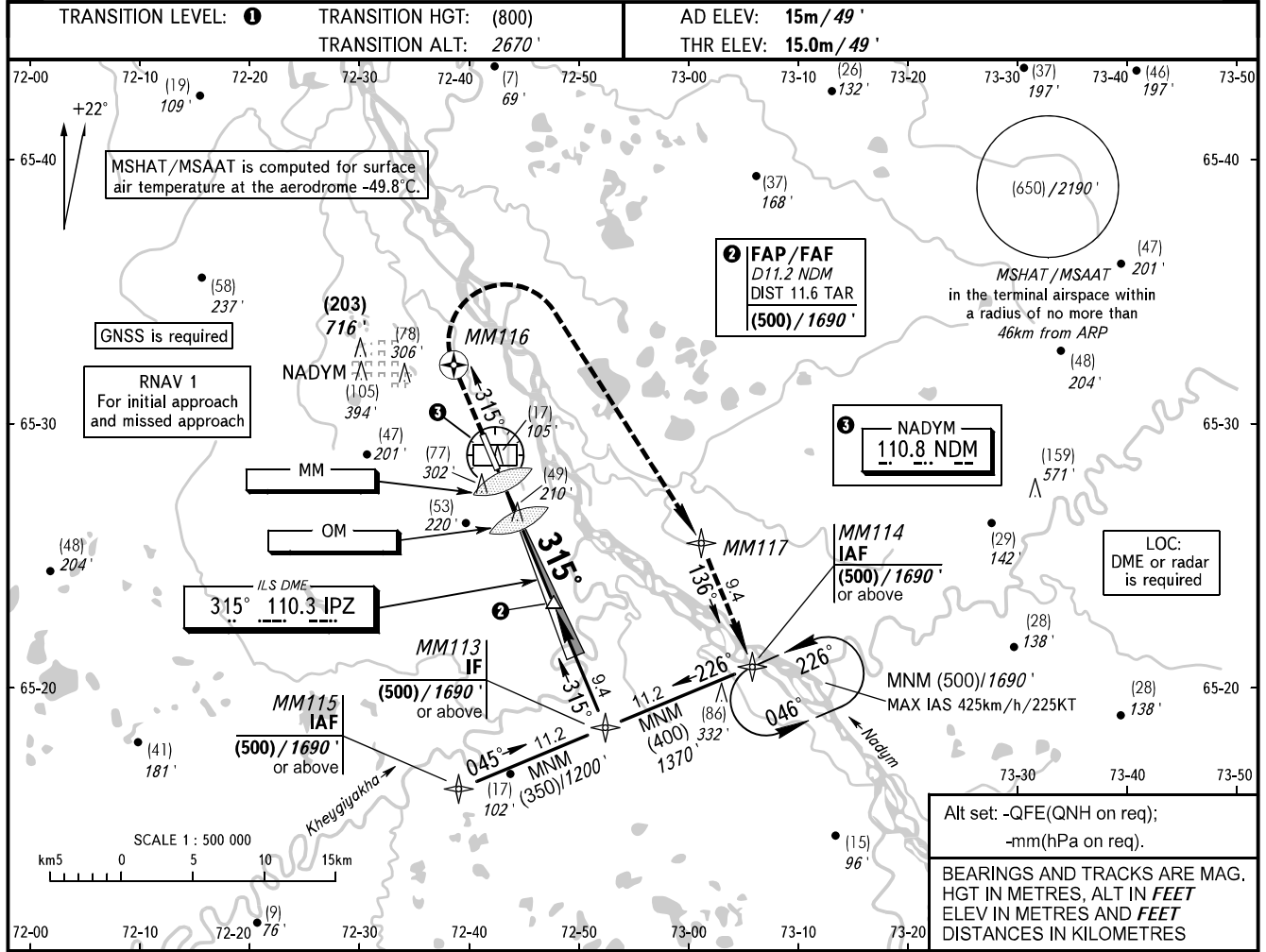


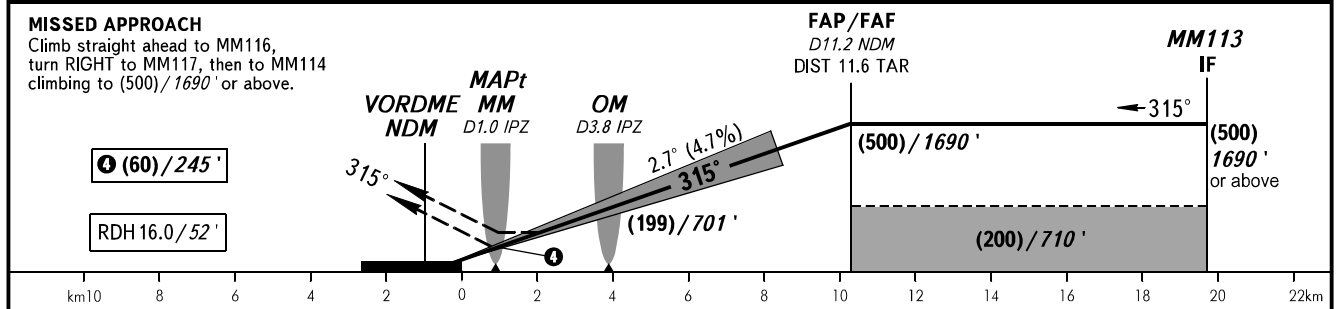
**INSTRUMENT
APPROACH
CHART - ICAO**

RADAR **135.400**
START **120.600**

NADYM, RUSSIA
NADYM
ILS Z CAT I, LOC Z RWY 32



| | | | | | |
|-----------------|------------|------------|-------------|-------------|-------------|
| DME NDM | 4.0 | 6.0 | 8.0 | 10.0 | 11.2 |
| HEIGHT/ALTITUDE | (158)/568' | (253)/878' | (347)/1188' | (441)/1497' | (500)/1690' |



| OCA(H) | | A | B | C | D |
|----------------------|-------|------------------|------------------|------------------|------------------|
| Straight-in Approach | CAT I | 58(43) 191' | 61(46) 201' | 64(49) 210' | 68(53) 224' |
| | LOC | 140(125) 460' | 140(125) 460' | 140(125) 460' | 140(125) 460' |
| Circling | | 185(170) 610' | 185(170) 610' | 215(200) 710' | 240(225) 790' |

1. TRANSITION LEVEL:
- FL040 when QFE is 751mm mercury column or above (1001 hPa);
- FL050 when QFE is less than 751mm mercury column (1001 hPa).
NOTE:
1. ILS DME IPZ reads zero at RWY 32 THR.
2. TAR distance is indicated from ARP.
3. MAPt at MM (LOC). Timing not authorized for defining MAPt.
4. Turn before passing MAPt is PROHIBITED.

| GROUND SPEED | km/h | 150 | 180 | 210 | 240 | 270 | 300 | 330 | 360 | 390 |
|-----------------|--------|-----|-----|-----|-----|-----|-----|-----|-----|------|
| | kt | 81 | 97 | 113 | 130 | 146 | 162 | 178 | 194 | 211 |
| RATE OF DESCENT | m/s | 2.0 | 2.4 | 2.8 | 3.1 | 3.5 | 3.9 | 4.3 | 4.7 | 5.1 |
| | ft/min | 387 | 464 | 542 | 619 | 696 | 774 | 851 | 928 | 1006 |