

STANDARD ARRIVAL CHART
INSTRUMENT (STAR) - ICAO

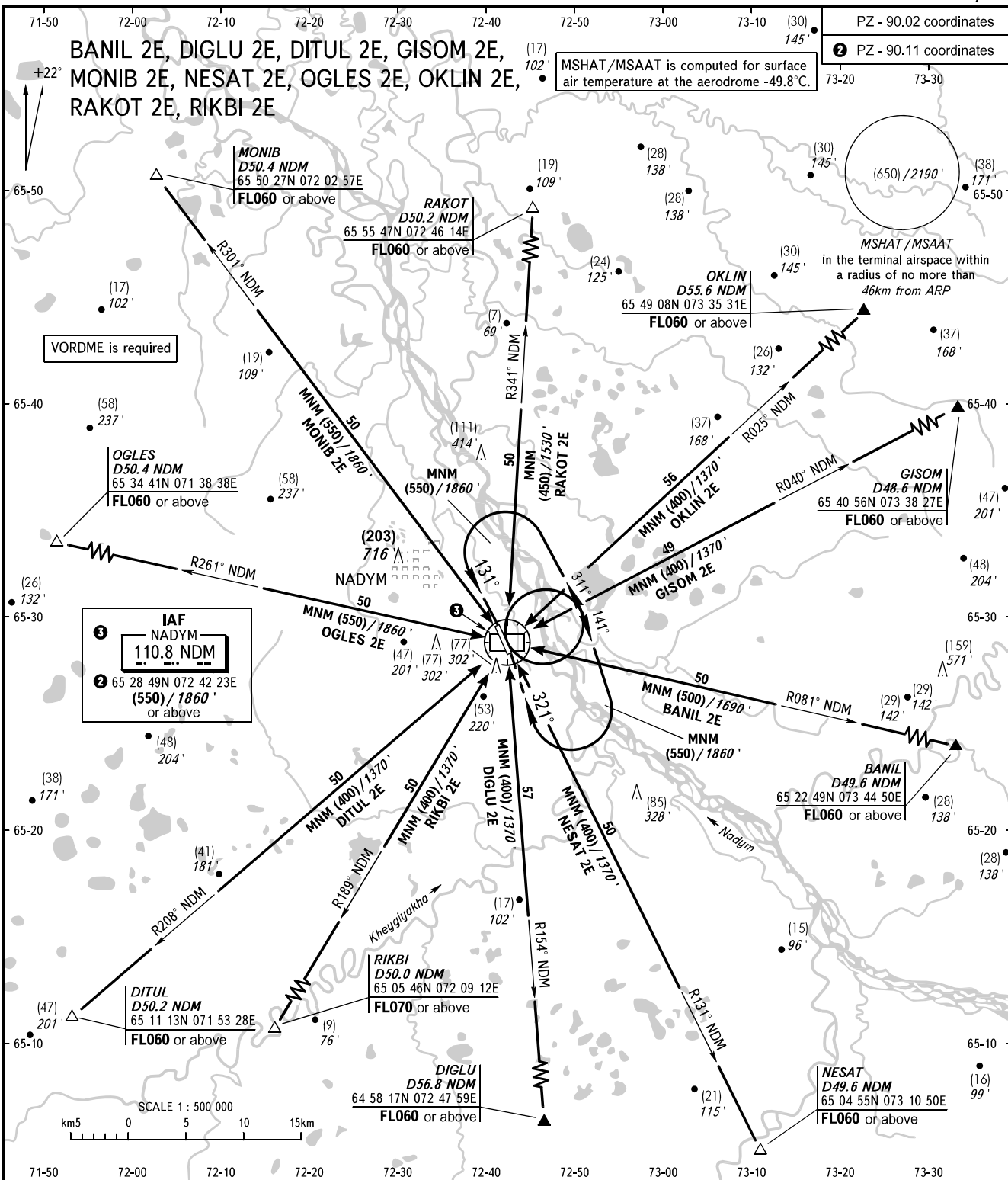
NADYM, RUSSIA

NADYM

RWY 14/32

TRANSITION
LEVEL : ①

PZ - 90.02 coordinates
PZ - 90.11 coordinates



RADAR 135.400
START 120.600

① TRANSITION LEVEL:
- FL040 when QFE is 751mm mercury column or above (1001 hPa);
- FL050 when QFE is less than 751mm mercury column (1001 hPa).

BEARINGS AND TRACKS ARE MAGNETIC
ALTITUDES IN FEET, HEIGHTS IN METRES
ELEVATIONS IN METRES AND FEET
DISTANCES IN KILOMETRES

Alt set: -QFE(QNH on req);
-mm(hPa on req).