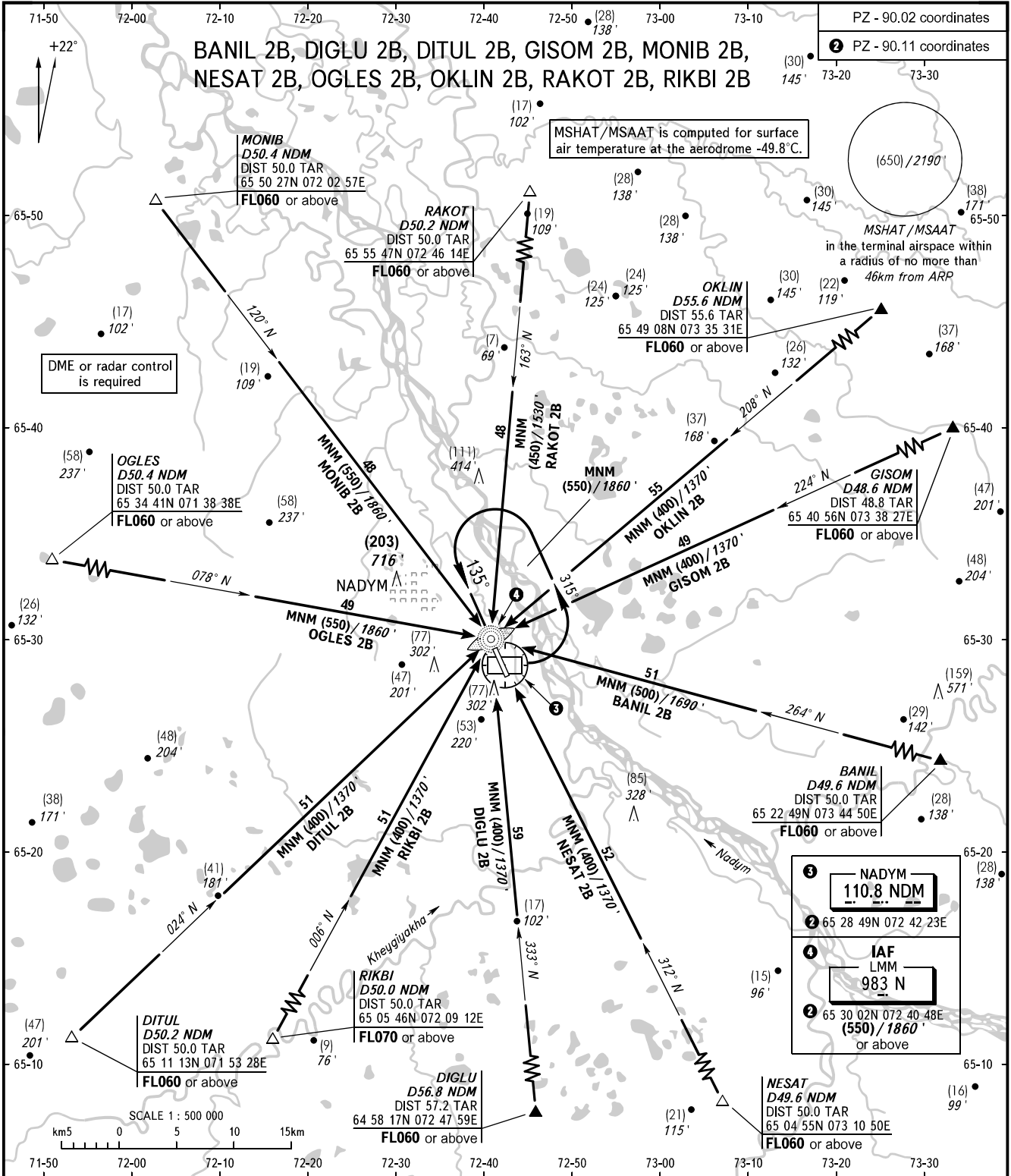


STANDARD ARRIVAL CHART
INSTRUMENT (STAR) - ICAO

NADYM, RUSSIA
NADYM
RWY 14

TRANSITION
LEVEL : **1**



1 NADYM
110.8 NDM

2 65 28 49N 072 42 23E

4 IAF
LMM
983 N

2 65 30 02N 072 40 48E
(550) / 1860'
or above

RADAR	135.400
START	120.600

BEARINGS AND TRACKS ARE MAGNETIC ALTITUDES IN FEET, HEIGHTS IN METRES ELEVATIONS IN METRES AND FEET DISTANCES IN KILOMETRES	Alt set: -QFE(QNH on req); -mm(hPa on req).
--	--

1 TRANSITION LEVEL:
- FL040 when QFE is 751mm mercury column or above (1001 hPa);
- FL050 when QFE is less than 751mm mercury column (1001 hPa).

NOTE
TAR distance is indicated from ARP.

CHANGE: COM