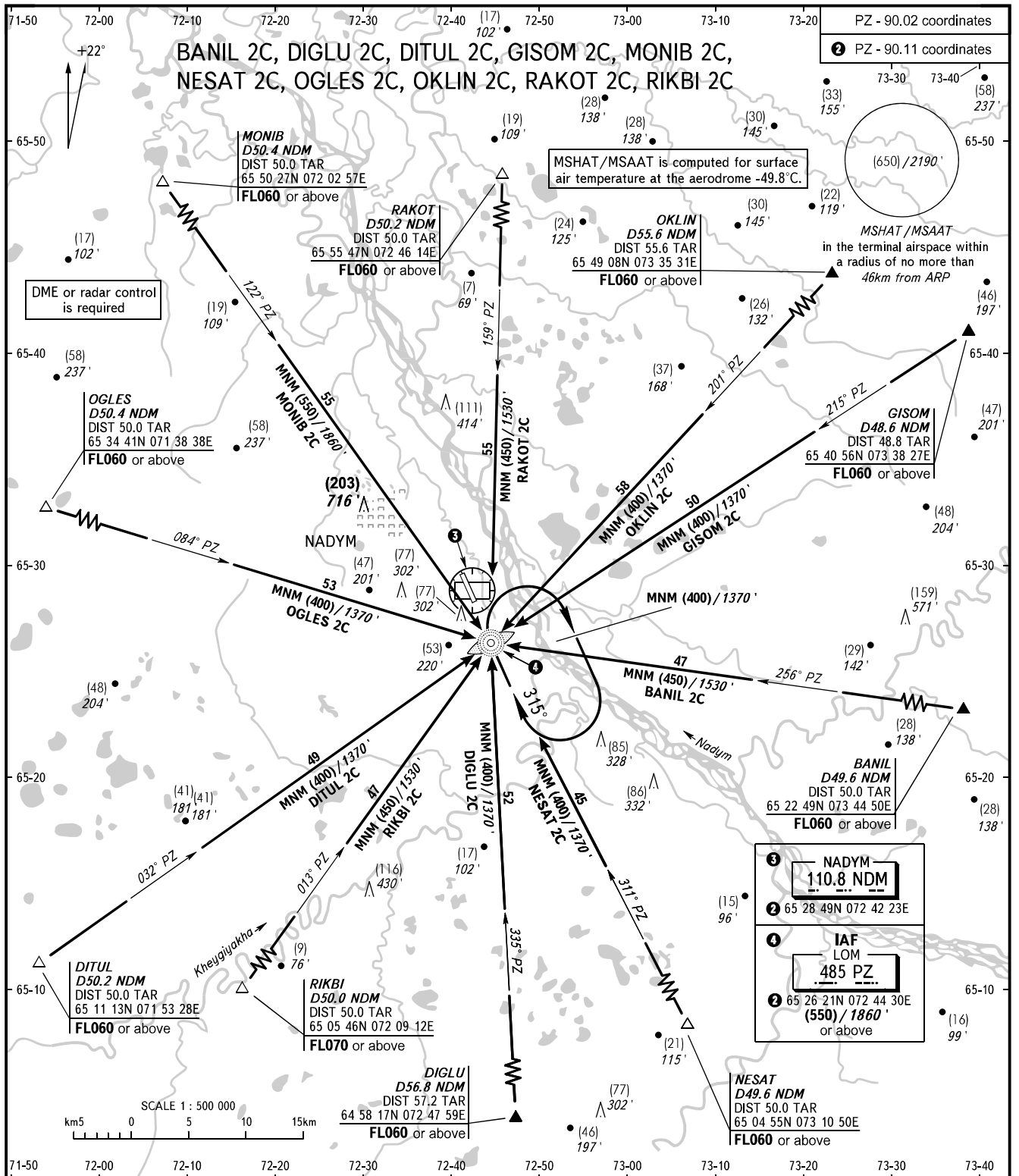


STANDARD ARRIVAL CHART
INSTRUMENT (STAR) - ICAO

NADYM, RUSSIA
NADYM
RWY 32

TRANSITION
LEVEL: **1**



RADAR **135.400**
START **120.600**

1 TRANSITION LEVEL:
- FL040 when QFE is 751mm mercury column or above (1001 hPa);
- FL050 when QFE is less than 751mm mercury column (1001 hPa).

NOTE
TAR distance is indicated from ARP.

BEARINGS AND TRACKS ARE MAGNETIC
ALTITUDES IN FEET, HEIGHTS IN METRES
ELEVATIONS IN METRES AND FEET
DISTANCES IN KILOMETRES

Alt set: -QFE(QNH on req);
-mm(hPa on req).