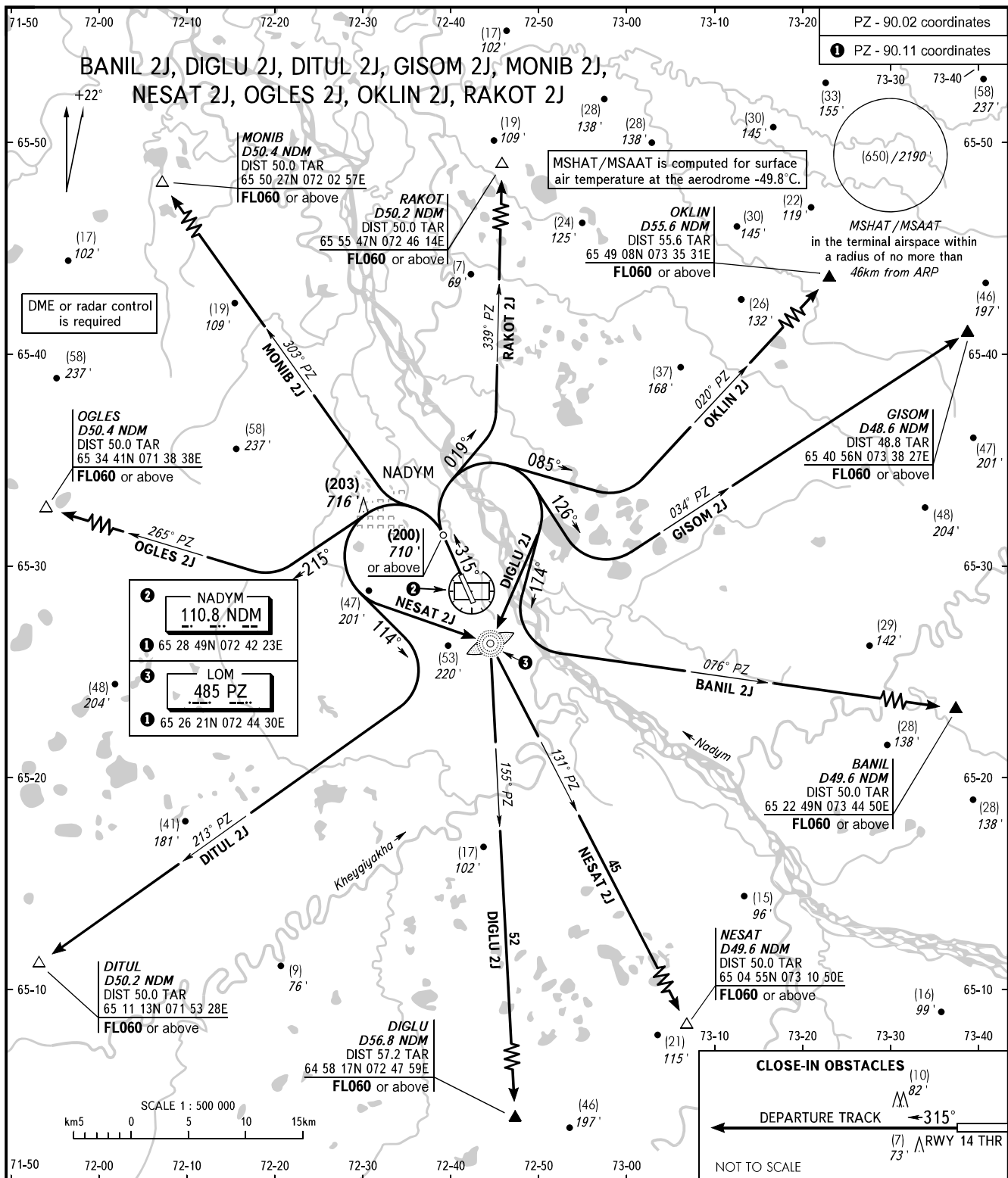


STANDARD DEPARTURE CHART  
INSTRUMENT (SID) - ICAO

NADYM, RUSSIA  
NADYM  
RWY 32

TRANSITION HEIGHT : (800)  
TRANSITION ALTITUDE: 2670'



START	120.600
RADAR	135.400

**WARNING**  
The minimum climb gradients are as follows (required due to the airspace structure):  
- 3.4% up to FL060 for OGLES 2J;  
- 3.7% up to FL060 for MONIB 2J;  
- 3.7% up to FL060 for RAKOT 2J.

**NOTE**  
TAR distance is indicated from ARP.

BEARINGS AND TRACKS ARE MAGNETIC  
ALTITUDES IN FEET, HEIGHTS IN METRES  
ELEVATIONS IN METRES AND FEET  
DISTANCES IN KILOMETRES

Alt set: -QFE(QNH on req);  
-mm(hPa on req).