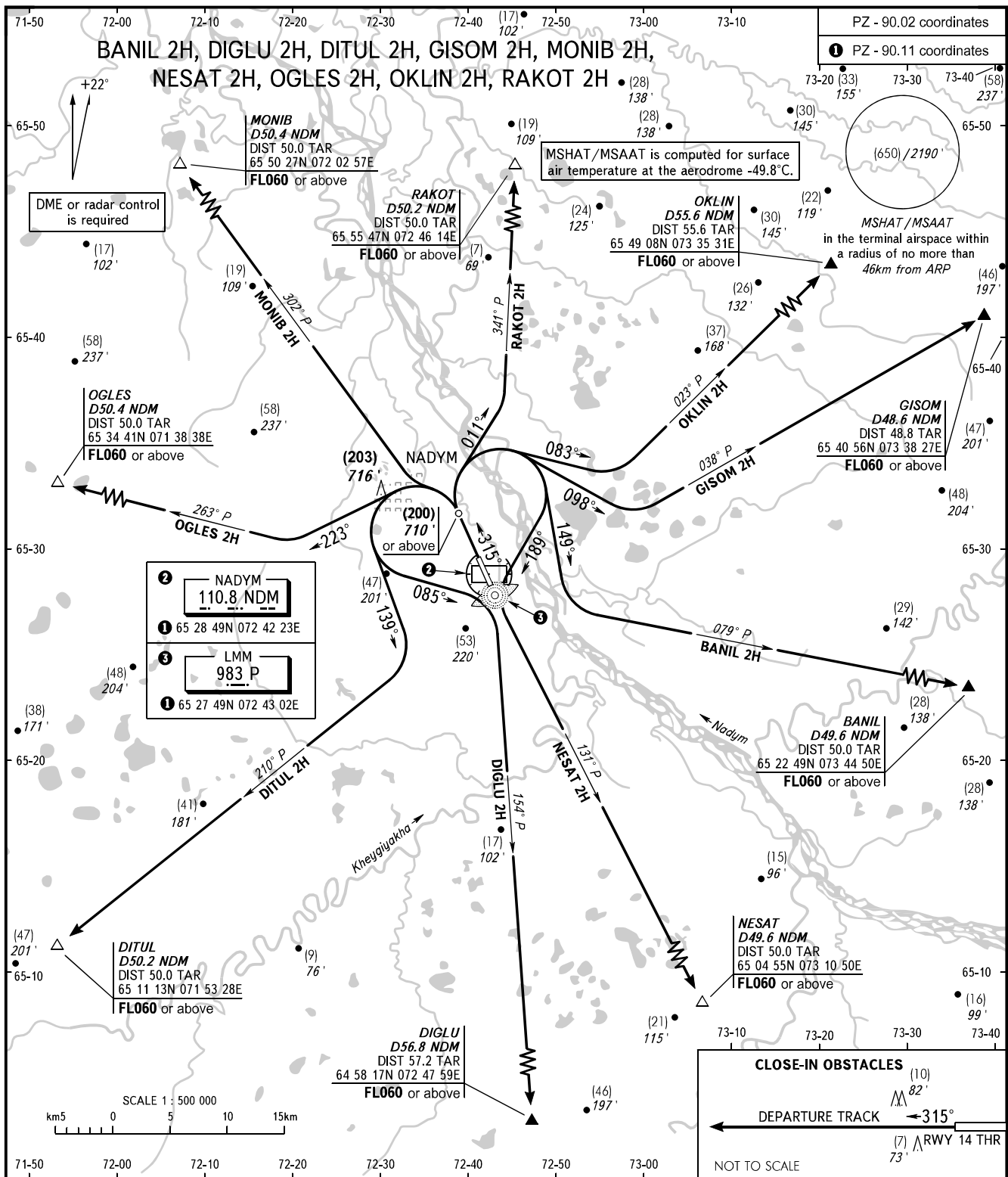


STANDARD DEPARTURE CHART
INSTRUMENT (SID) - ICAO

NADYM, RUSSIA
NADYM
RWY 32

TRANSITION HEIGHT : (800)
TRANSITION ALTITUDE: 2670'



START 120.600
RADAR 135.400

WARNING
The minimum climb gradients are as follows (required due to the airspace structure):
- 3.5% up to FL060 for OGLES 2H;
- 3.7% up to FL060 for RAKOT 2H;
- 3.8% up to FL060 for MONIB 2H.

NOTE
TAR distance is indicated from ARP.

BEARINGS AND TRACKS ARE MAGNETIC
ALTITUDES IN FEET, HEIGHTS IN METRES
ELEVATIONS IN METRES AND FEET
DISTANCES IN KILOMETRES

Alt set: -QFE(QNH on req);
-mm(hPa on req).