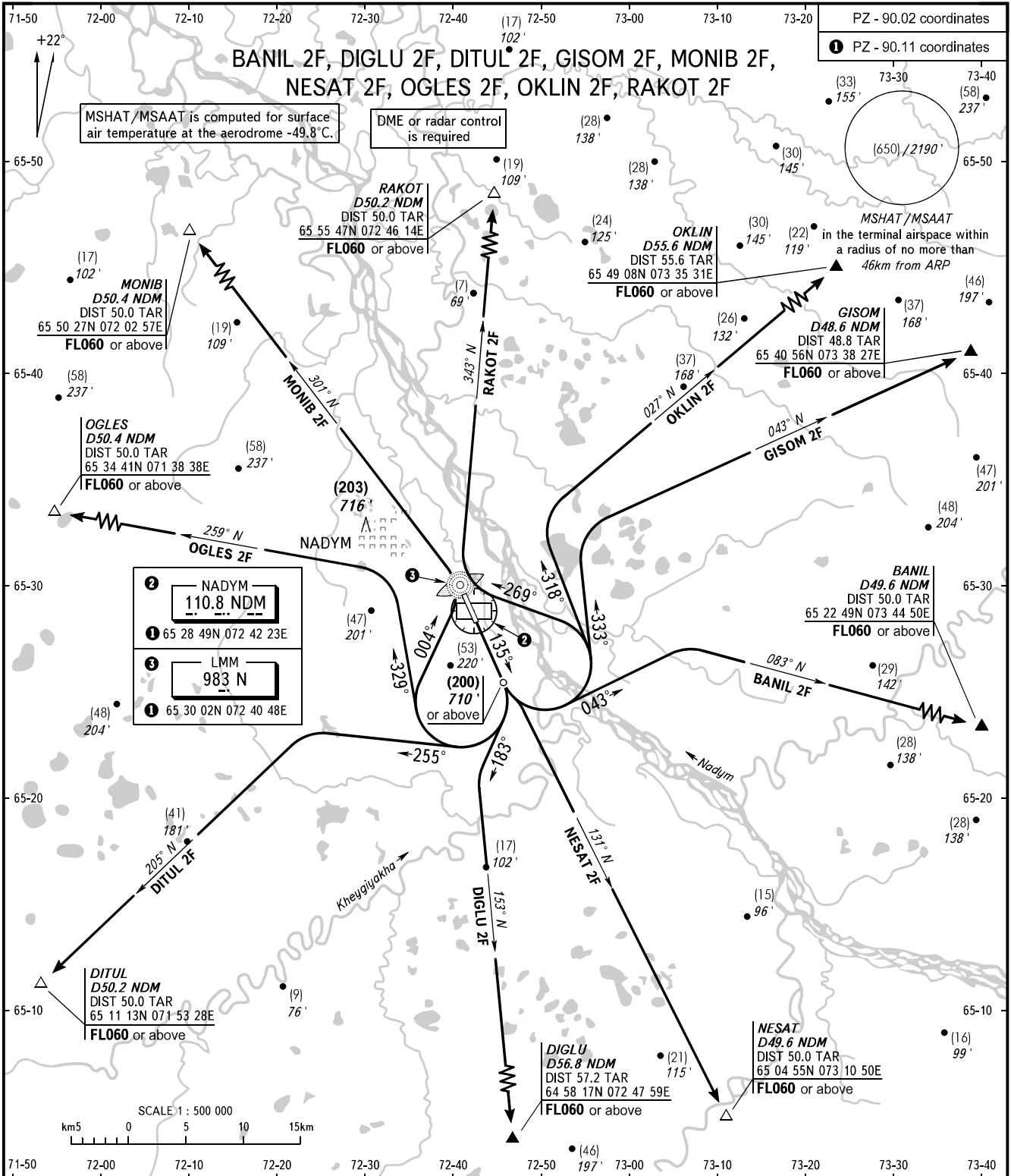


STANDARD DEPARTURE CHART
INSTRUMENT (SID) - ICAO

TRANSITION HEIGHT : (800)
TRANSITION ALTITUDE: 2670'

NADYM, RUSSIA
NADYM
RWY 14



START 120.600
RADAR 135.400

WARNING
The minimum climb gradients are as follows (required due to the airspace structure):
- 3.5% up to FL060 for BANIL 2F;
- 3.8% up to FL060 for NESAT 2F.

NOTE
TAR distance is indicated from ARP.

BEARINGS AND TRACKS ARE MAGNETIC
ALTITUDES IN FEET, HEIGHTS IN METRES
ELEVATIONS IN METRES AND FEET
DISTANCES IN KILOMETRES

Alt set: -QFE(QNH on req);
-mm(hPa on req).