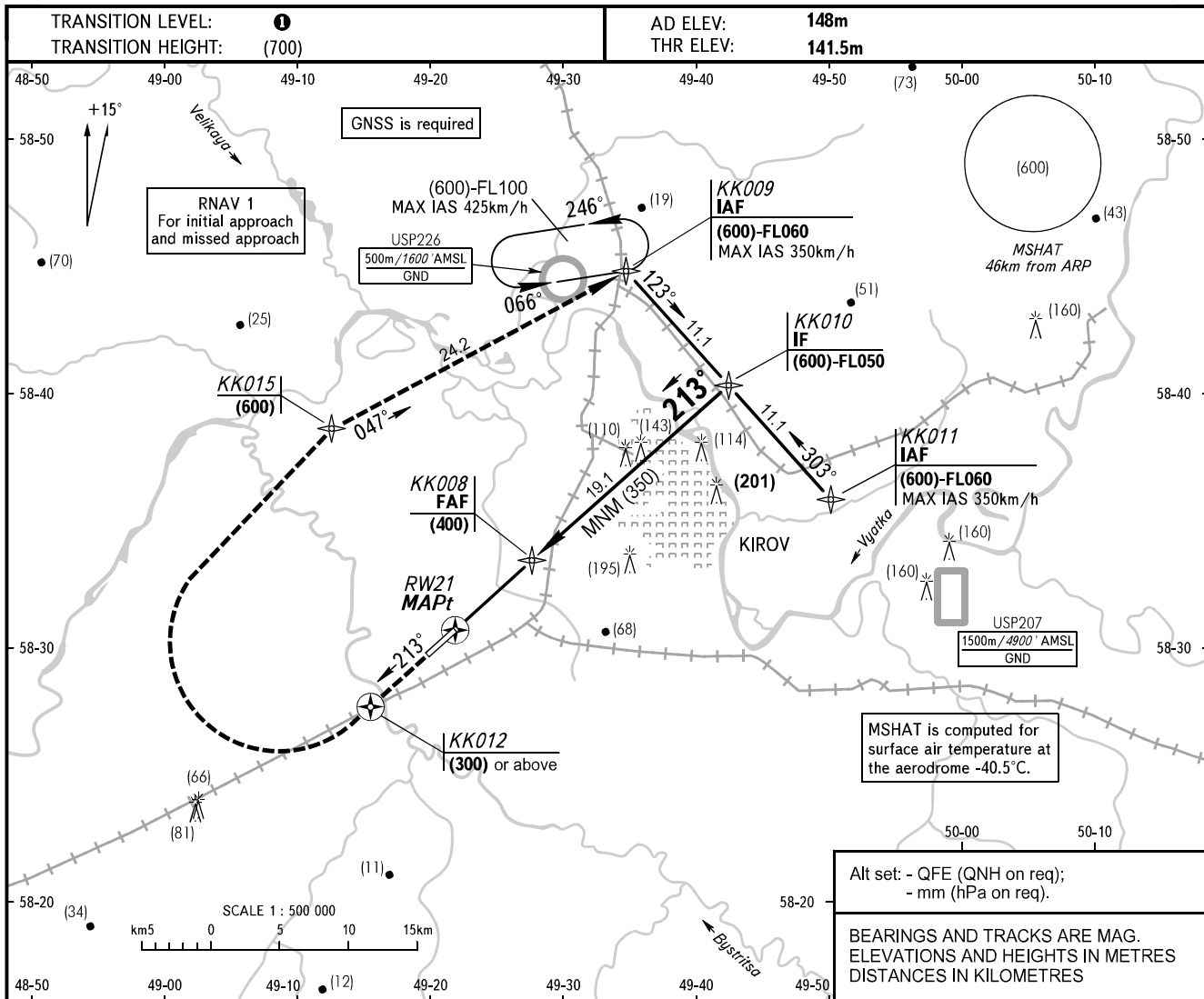


**INSTRUMENT
APPROACH
CHART - ICAO**

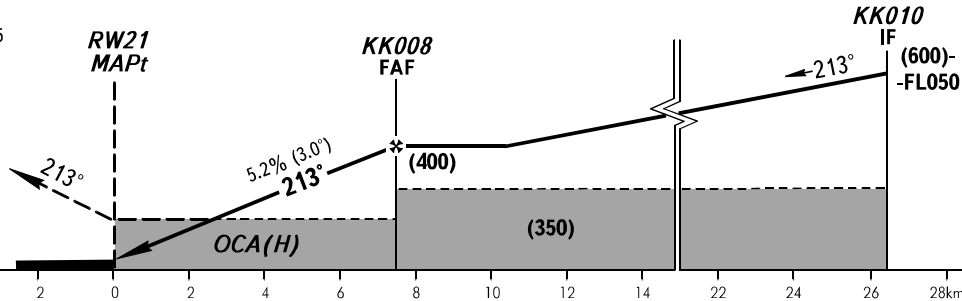
KIROV TOWER 127.525

KIROV, RUSSIA
POBEDILOVO
RNAV RWY 21



MISSED APPROACH

Climb on track 213° to KK012 climbing to (300) or above, turn RIGHT to KK015 climbing to (600), then to KK009, then according to chart or by ATC.



OCA(H)

A	B	C	D
(107)	(107)	(107)	(107)

Straight-in Approach

① TRANSITION LEVEL:

- FL040 when QFE is 747 mm mercury column or above;
- FL050 when QFE is 720 mm mercury column or above, but less than 747 mm mercury column;
- FL060 when QFE is less than 720 mm mercury column.

WARNING

MAPt at RW21. Timing not authorized for defining MAPt.

GROUND SPEED	km/h	150	180	210	240	270	300	330	360	390	420	450
RATE OF DESCENT	m/s	2.2	2.6	3.1	3.5	3.9	4.4	4.8	5.2	5.7	6.1	6.6