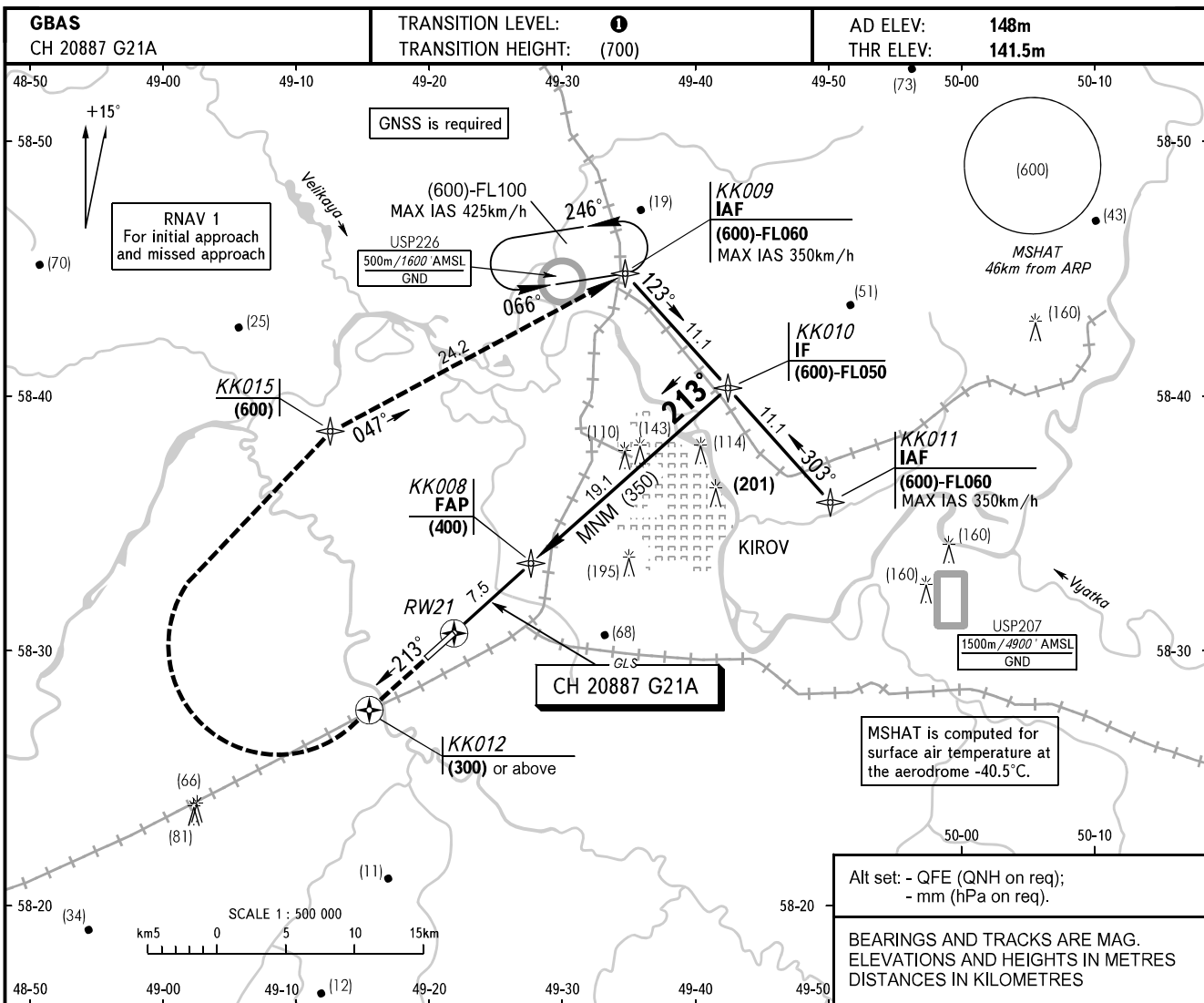


**INSTRUMENT  
APPROACH  
CHART - ICAO**

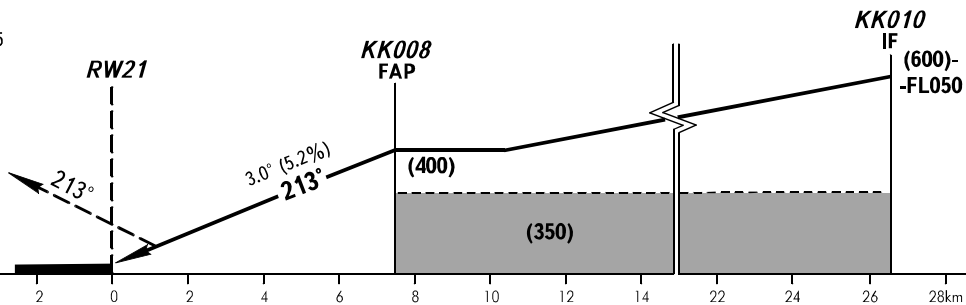
KIROV TOWER 127.525

**KIROV, RUSSIA**  
POBEDILOVO  
GLS RWY 21



**MISSED APPROACH**

Climb on track 213° to KK012 climbing to (300) or above, turn RIGHT to KK015 climbing to (600), then to KK009, then according to chart or by ATC.



OCA(H)		A	B	C	D							
Straight-in Approach		(71)	(74)	(77)	(80)							
GROUND SPEED	km/h	150	180	210	240	270	300	330	360	390	420	450
RATE OF DESCENT	m/s	2.2	2.6	3.1	3.5	3.9	4.4	4.8	5.2	5.7	6.1	6.6

① TRANSITION LEVEL:

- FL040 when QFE is 747 mm mercury column or above;
- FL050 when QFE is 720 mm mercury column or above, but less than 747 mm mercury column;
- FL060 when QFE is less than 720 mm mercury column.