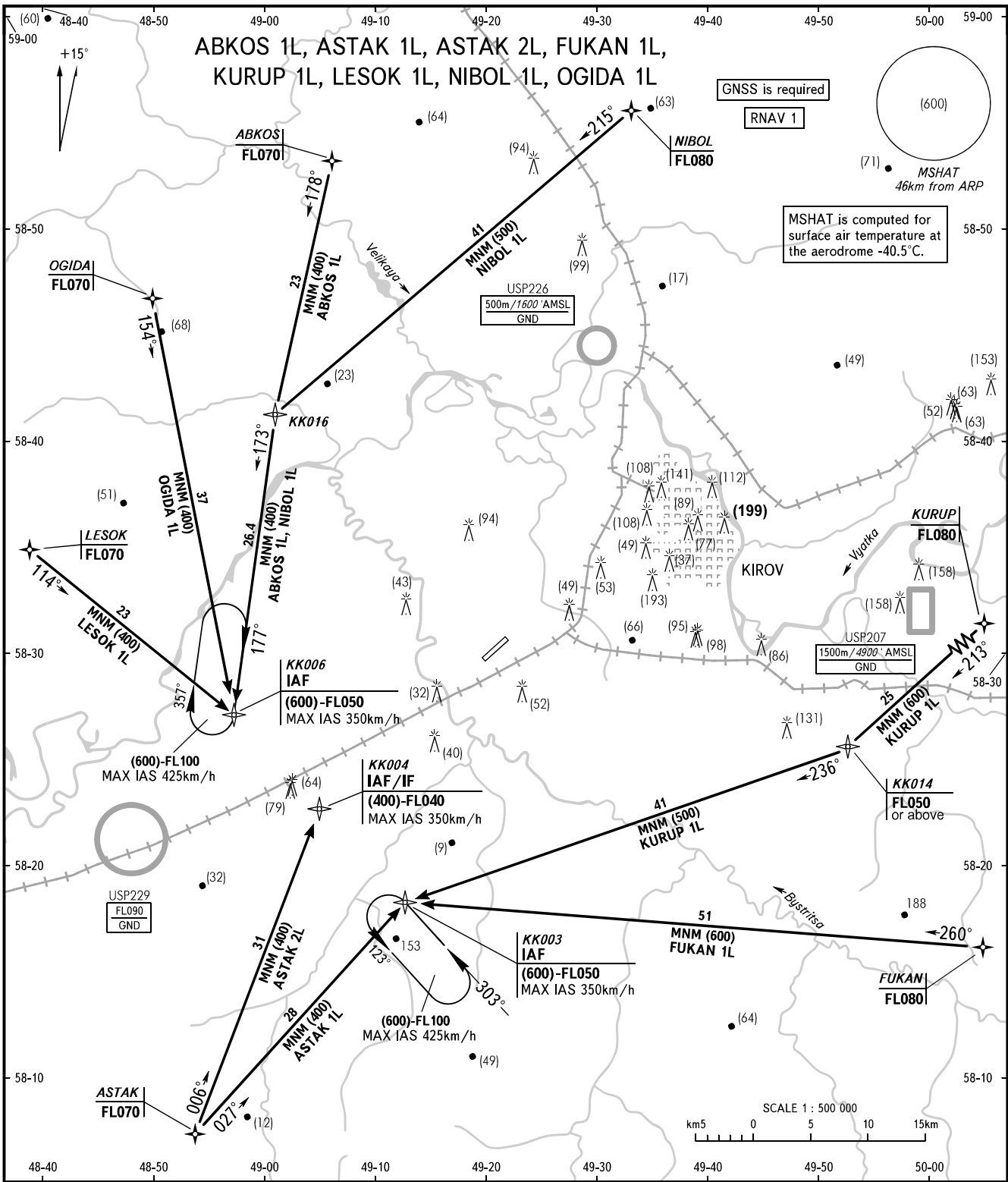


STANDARD ARRIVAL CHART
INSTRUMENT (STAR) - ICAO

TRANSITION LEVEL: **1**

KIROV, RUSSIA
POBEDILOVO
RNAV RWY 03



KIROV TOWER 127.525

- 1** TRANSITION LEVEL:
- FL040 when QFE is 747 mm mercury column or above;
 - FL050 when QFE is 720 mm mercury column or above, but less than 747 mm mercury column;
 - FL060 when QFE is less than 720 mm mercury column.

BEARINGS AND TRACKS ARE MAG.
ELEVATIONS AND HEIGHTS IN METRES
DISTANCES IN KILOMETRES

Alt set: - QFE (QNH on req);
- mm (hPa on req).

CHANGE: New chart