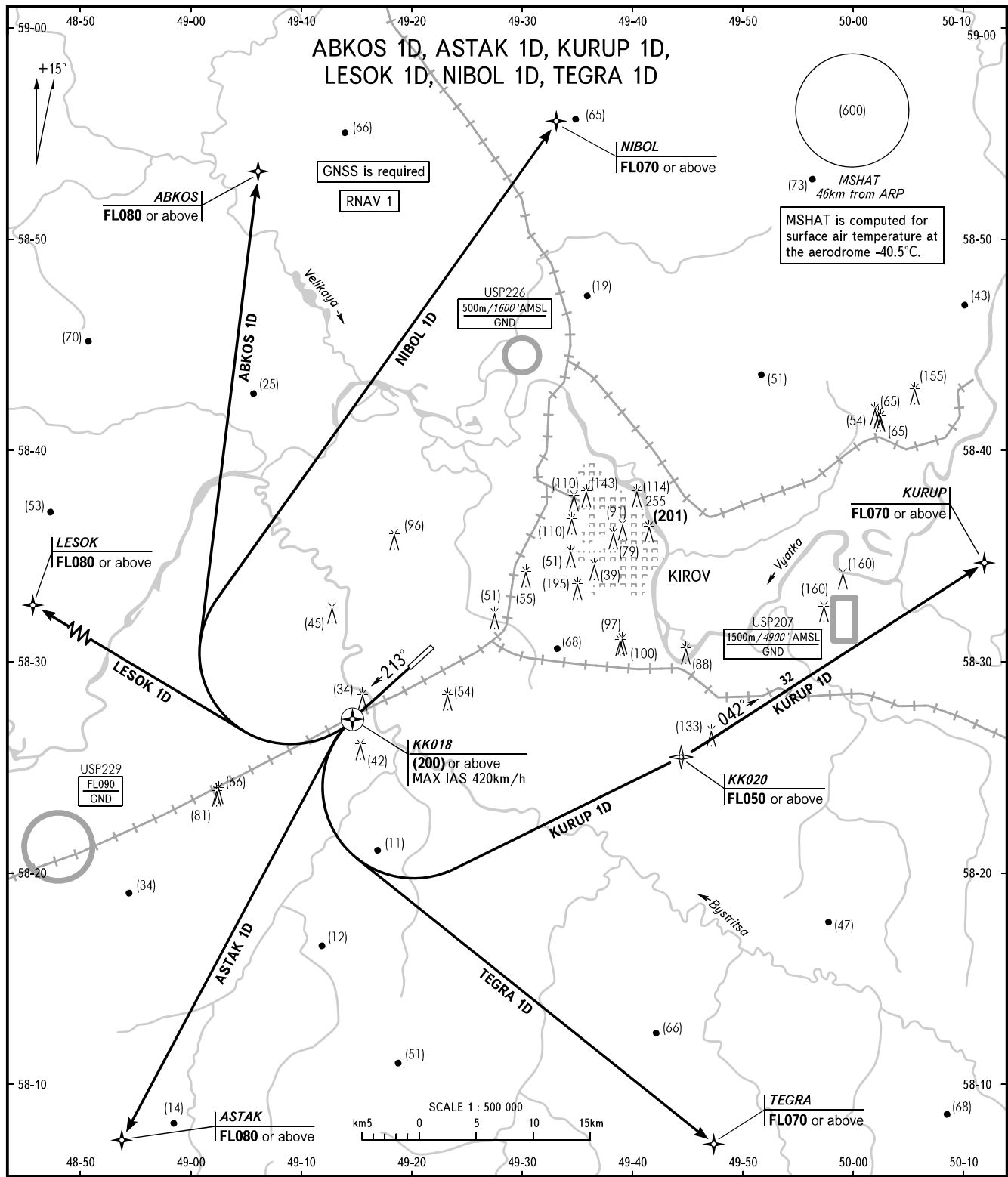


STANDARD DEPARTURE CHART
INSTRUMENT (SID) - ICAO

KIROV, RUSSIA
POBEDILOVO
RNAV RWY 21

TRANSITION
HEIGHT: (700)



KIROV TOWER 127.525

WARNING
The minimum climb gradients due to the airspace structure:
- 3.7% up to FL080 for ABKOS 1D;
- 4.7% up to FL080 for ASTAK 1D;
- 5.1% up to FL080 for LESOK 1D;
- 3.4% up to FL070 for TEGRA 1D.

BEARINGS AND TRACKS ARE MAG.
ELEVATIONS AND HEIGHTS IN METRES
DISTANCES IN KILOMETRES

Alt set: - QFE (QNH on req);
- mm (hPa on req).