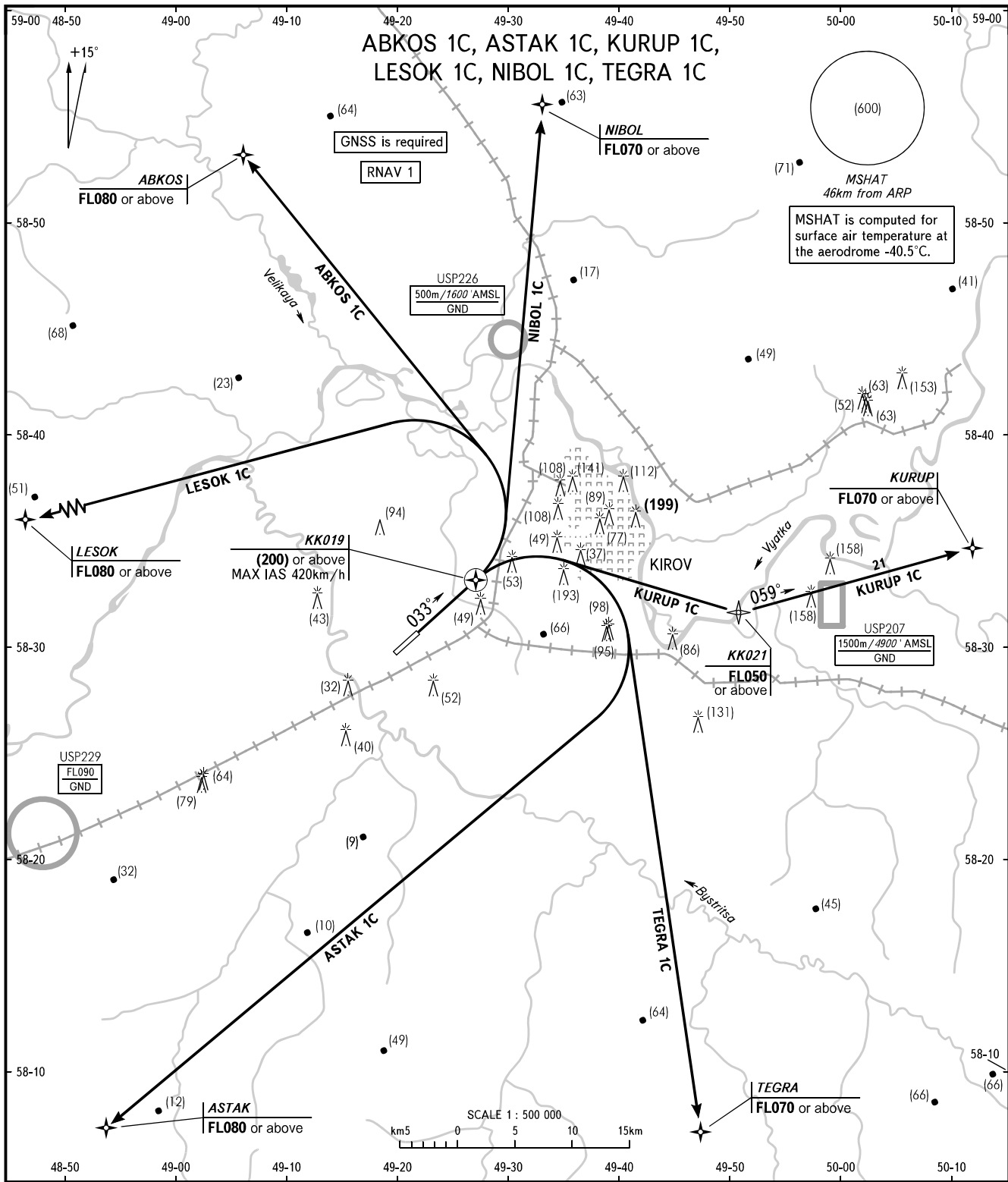


STANDARD DEPARTURE CHART
INSTRUMENT (SID) - ICAO

TRANSITION
HEIGHT: (700)

KIROV, RUSSIA
POBEDILOVO
RNAV RWY 03



KIROV TOWER 127.525

WARNING
The minimum climb gradients due to the airspace structure:
- 4.0% up to FL080 for ABKOS 1C;
- 4.2% up to FL070 for NIBOL 1C;
- 4.0% up to FL070 for KURUP 1C.

BEARINGS AND TRACKS ARE MAG.
ELEVATIONS AND HEIGHTS IN METRES
DISTANCES IN KILOMETRES

Alt set: - QFE (QNH on req);
- mm (hPa on req).

CHANGE: New chart