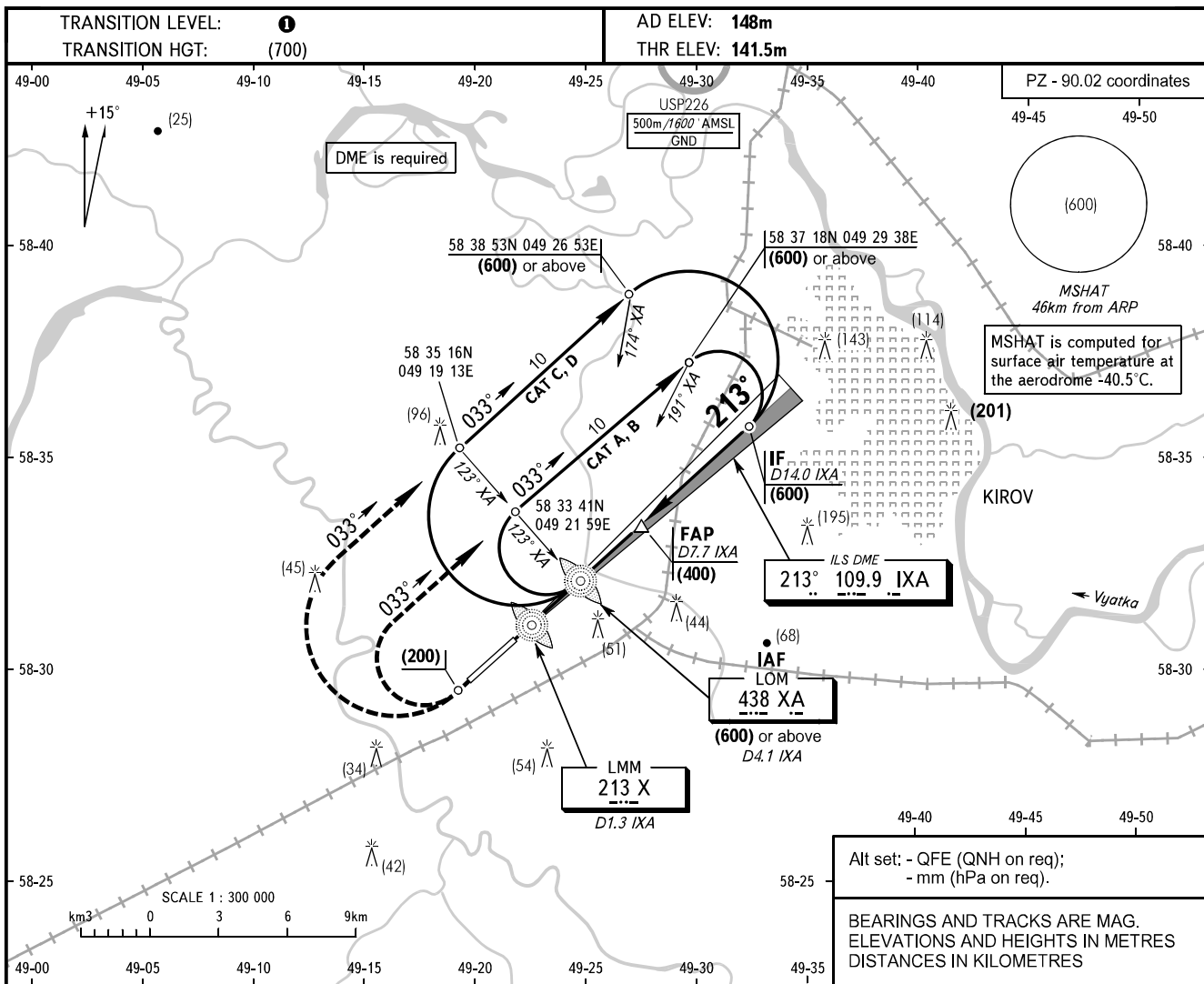


**INSTRUMENT
APPROACH
CHART - ICAO**

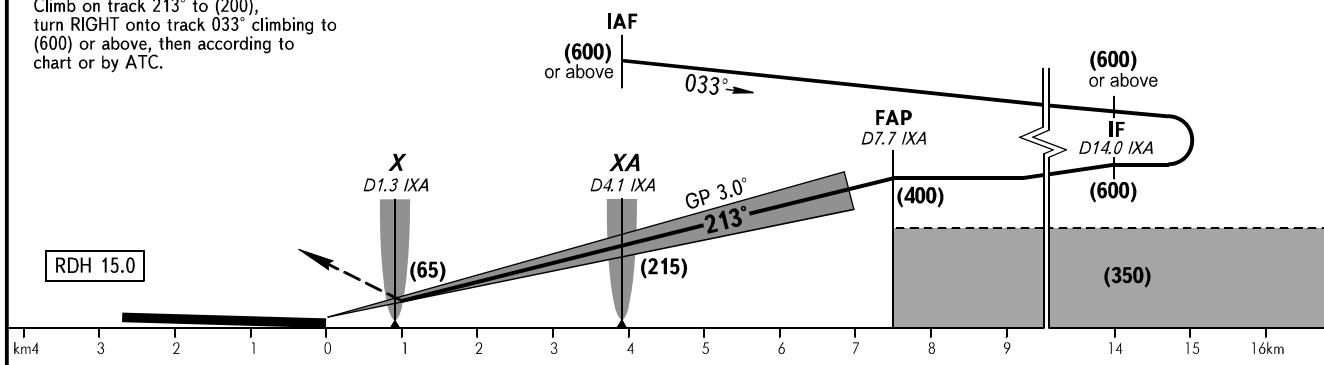
KIROV TOWER **127.525**

KIROV, RUSSIA
POBEDILOVO
ILS Z RWY 21



MISSED APPROACH

Climb on track 213° to (200),
turn RIGHT onto track 033° climbing to
(600) or above, then according to
chart or by ATC.



OCA(H)		A	B	C	D	1 TRANSITION LEVEL:										
Straight-in Approach		(71)	(74)	(77)	(80)	- FLO40 when QFE is 747 mm mercury column or above;										
						- FLO50 when QFE is 720 mm mercury column or above, but less than 747 mm mercury column;										
						- FLO60 when QFE is less than 720 mm mercury column.										
GROUND SPEED	km/h	150	180	210	240	270	300	330	360	390	420	450				
RATE OF DESCENT	m/s	2.2	2.6	3.1	3.5	3.9	4.4	4.8	5.2	5.7	6.1	6.6				