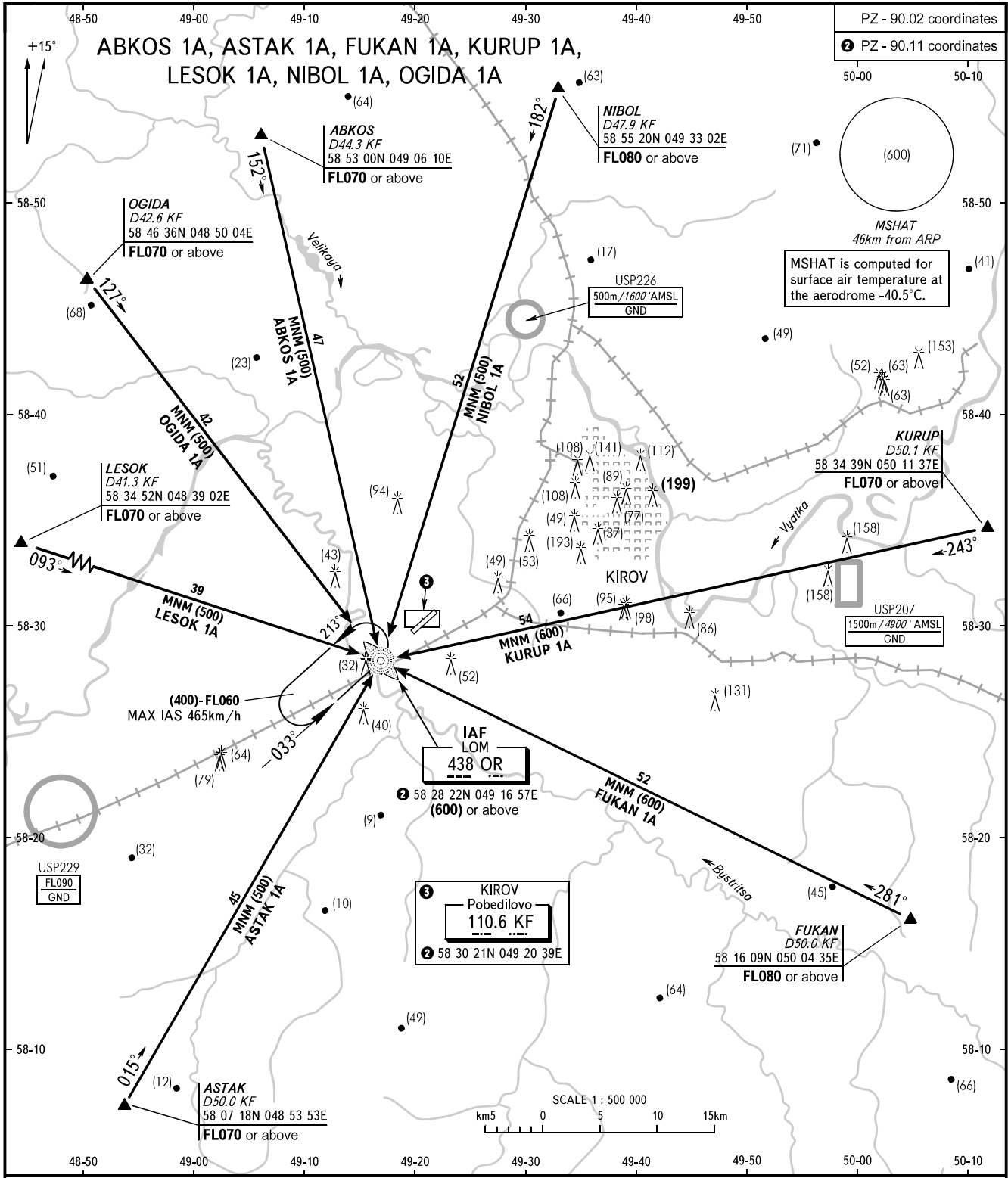


STANDARD ARRIVAL CHART  
INSTRUMENT (STAR) - ICAO

TRANSITION LEVEL: ①

KIROV, RUSSIA  
POBEDILOVO  
RWY 03



KIROV TOWER 127.525

- ① TRANSITION LEVEL:
- FL040 when QFE is 747 mm mercury column or above;
  - FL050 when QFE is 720 mm mercury column or above, but less than 747 mm mercury column;
  - FL060 when QFE is less than 720 mm mercury column.

CHANGE: New chart

BEARINGS AND TRACKS ARE MAG.  
ELEVATIONS AND HEIGHTS IN METRES  
DISTANCES IN KILOMETRES

Alt set: - QFE (QNH on req);  
- mm (hPa on req).