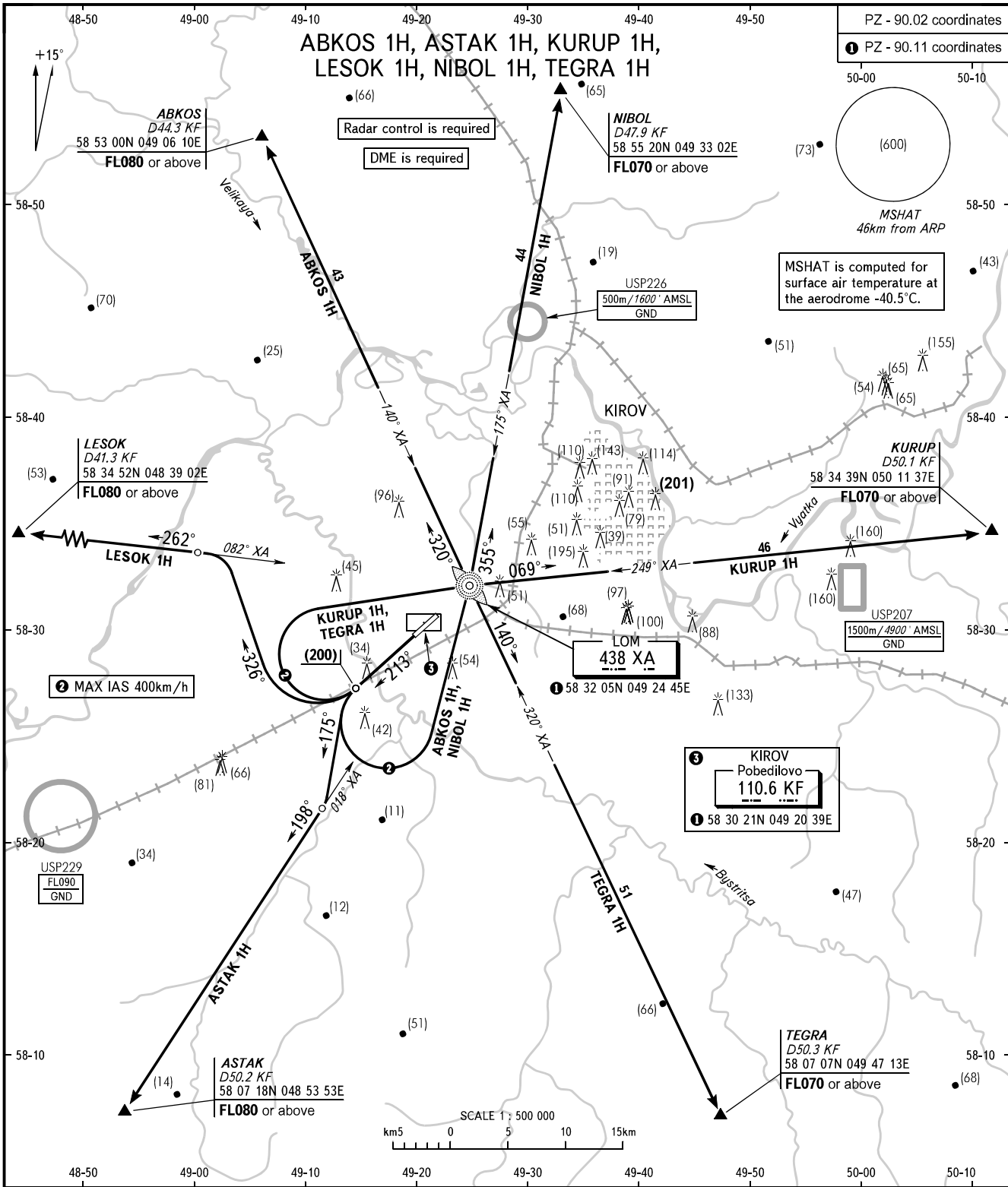


KIROV, RUSSIA
POBEDILOVO
RWY 21

STANDARD DEPARTURE CHART
INSTRUMENT (SID) - ICAO

TRANSITION
HEIGHT: **(700)**



KIROV TOWER **127.525**

WARNING:

- The minimum climb gradients due to the airspace structure:
 - 4.7% up to FL080 for ASTAK 1H;
 - 5.0% up to FL080 for LESOK 1H.
- Turn before DER is PROHIBITED.

BEARINGS AND TRACKS ARE MAG.
ELEVATIONS AND HEIGHTS IN METRES
DISTANCES IN KILOMETRES

Alt set: - QFE (QNH on req);
- mm (hPa on req).