

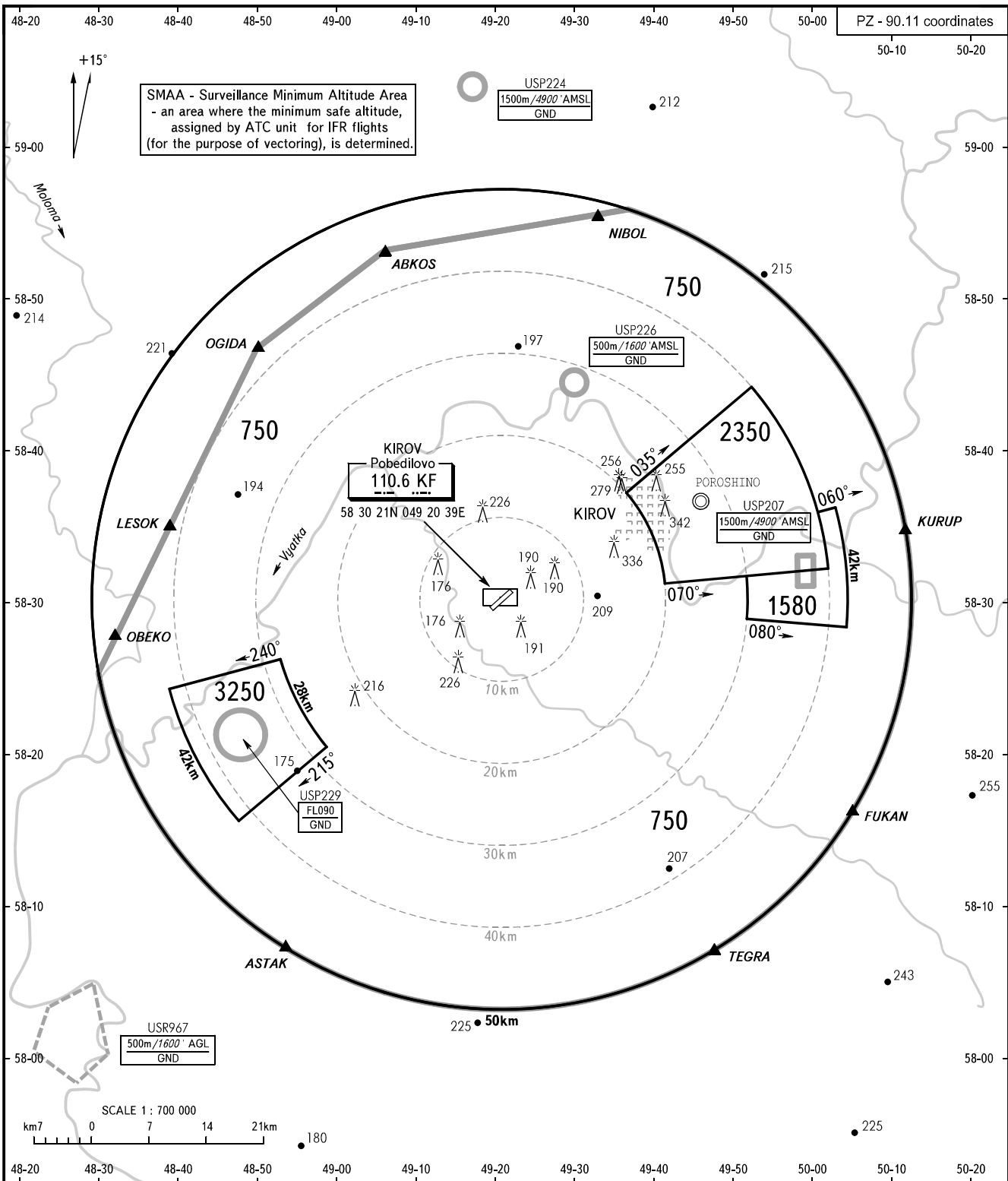
ATC SURVEILLANCE MINIMUM
ALTITUDE CHART - ICAO

ELEV
148m

TRANSITION HGT: (700)

KIROV, RUSSIA

POBEDILOVO



SMAA - Surveillance Minimum Altitude Area
- an area where the minimum safe altitude,
assigned by ATC unit for IFR flights
(for the purpose of vectoring), is determined.

KIROV
Pobedilovo
110.6 KF

USP224
1500m/4900' AMSL
GND

USP226
500m/1600' AMSL
GND

USP207
1500m/4900' AMSL
GND

USP229
FL090
GND

USR967
500m/1600' AGL
GND

KIROV TOWER 127.525

- WARNING:**
- When radar control is provided, the chart can be used for cross-checking of assigned altitudes only.
 - TEMPERATURE CORRECTION:**
When vectoring is carried out under low-temperature conditions, minimum vectoring altitudes for IFR flight must be corrected by altimeter temperature correction.
 - COMMUNICATION FAILURE:** In accordance with the procedures described in AIP.
 - In case of flight operations in the vicinity of Poroshino AD, vectoring is not provided to ACFT executing approach procedures to KIROV Pobedilovo AD.

BEARINGS AND TRACKS ARE MAGNETIC
ALTITUDES AND ELEVATIONS IN METRES
DISTANCES IN KILOMETRES

Alt set: - QFE (QNH on req);
- mm (hPa on req).

CHANGE: New chart