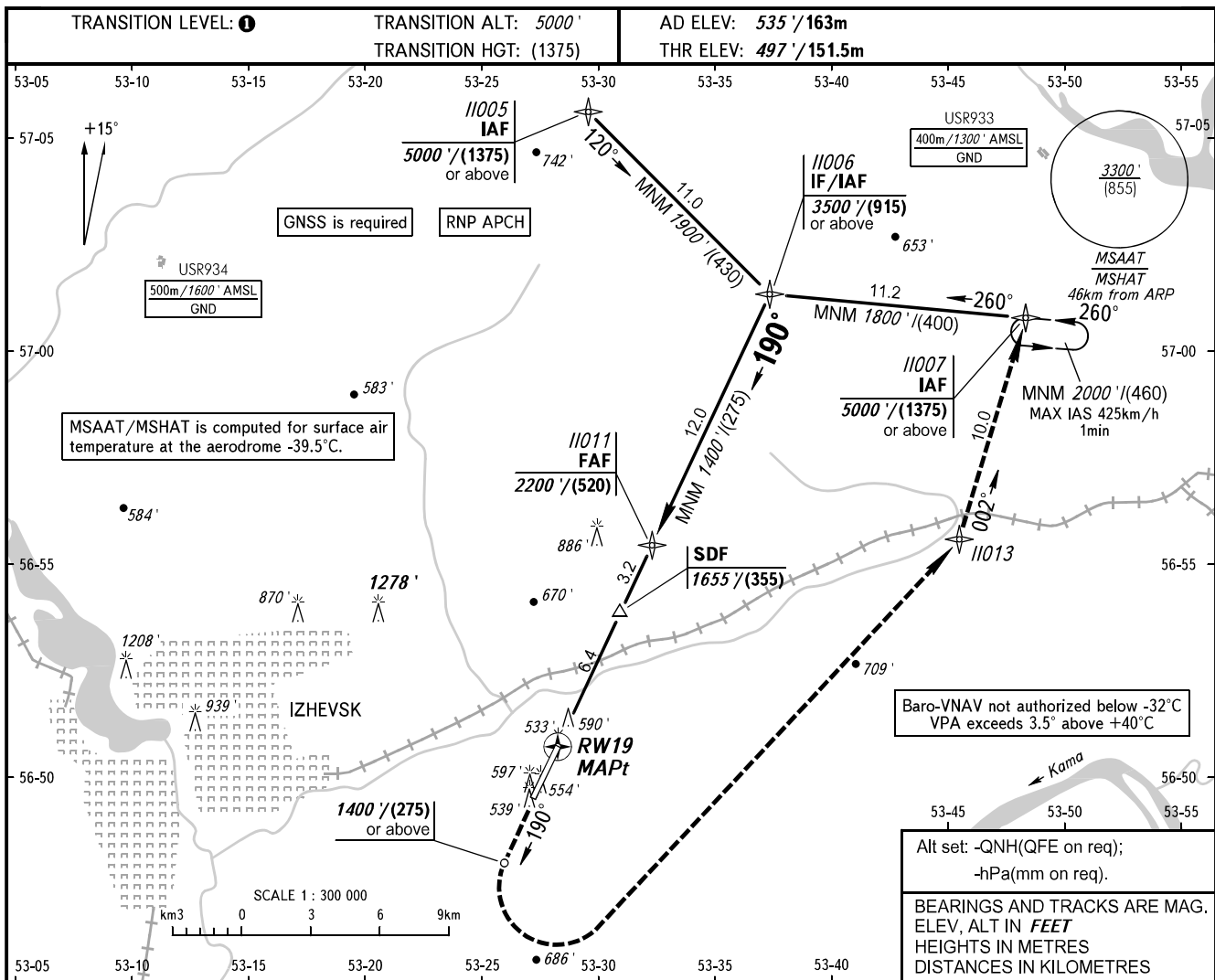


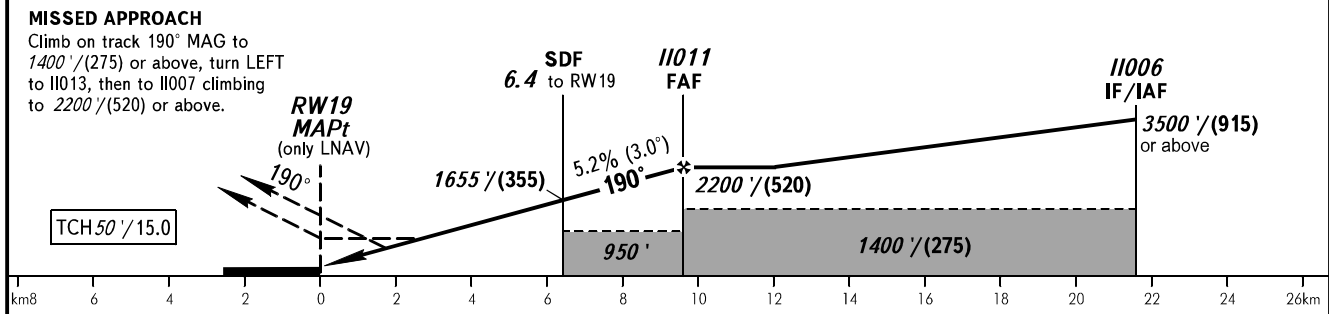
**INSTRUMENT  
APPROACH  
CHART - ICAO**

**IZHEVSK, RUSSIA  
IZHEVSK  
RNP RWY 19**

TOWER 120.400



DIST TO RW19	4.0	6.0	8.0	9.6
ALTITUDE/HEIGHT	1240' / (230)	1580' / (330)	1930' / (440)	2200' / (520)



OCA(H)		A	B	C	D							
Straight-in Approach	LNAV	890' (390') (120)	890' (390') (120)	890' (390') (120)	890' (390') (120)							
	LNAV/VNAV	770' (280') (85)	790' (290') (90)	790' (300') (90)	820' (320') (100)							
Circling		1040' (510') (155)	1050' (520') (160)	1150' (620') (190)	1230' (690') (215)							
GROUND SPEED	km/h	150	180	210	240	270	300	330	360	390	420	450
RATE OF DESCENT	m/s	2.2	2.6	3.0	3.5	3.9	4.3	4.8	5.2	5.6	6.1	6.5
	ft/min	427	512	597	682	768	853	938	1024	1109	1194	1280

**TRANSITION LEVEL:**  
 - FL060 when QNH is 1013 hPa (760mm mercury column) or above;  
 - FL070 when QNH is 977 hPa (733mm mercury column) or above, but less than 1013 hPa (760mm mercury column);  
 - FL080 when QNH is less than 977 hPa (733mm mercury column).

**WARNING**  
 Visual manoeuvring west of the AD is PROHIBITED.

MAPt at RW19. Timing not authorized for defining MAPt.