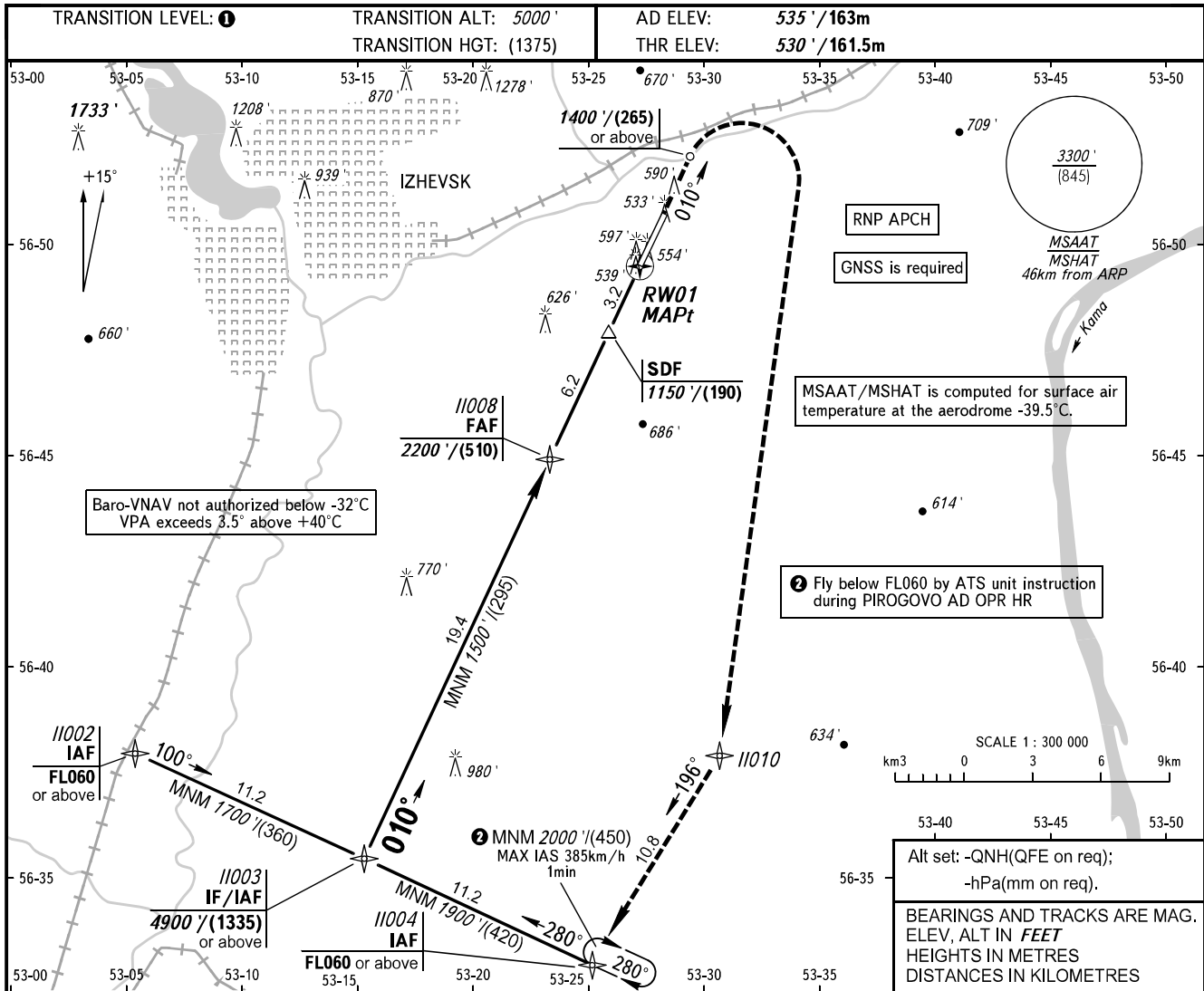


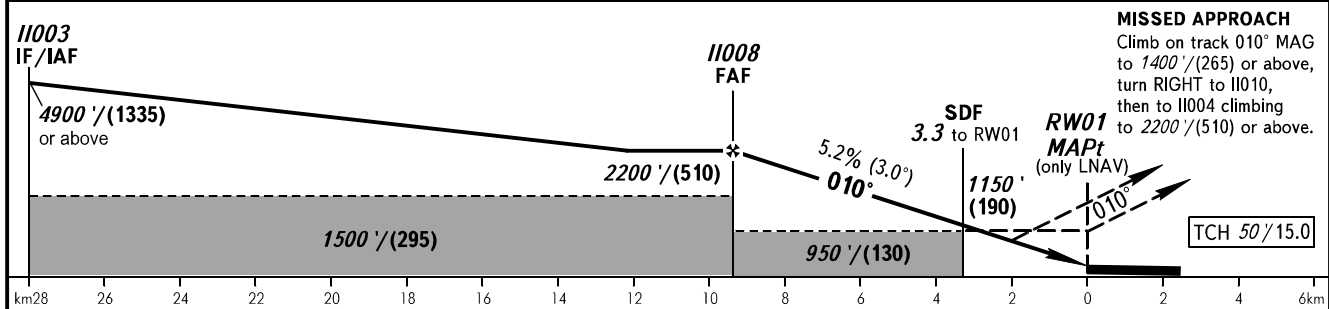
**INSTRUMENT
APPROACH
CHART - ICAO**

TOWER **120.400**

IZHEVSK, RUSSIA
IZHEVSK
RNP RWY 01



DIST to RW01	9.4	8.0	6.0	4.0
ALTITUDE/HEIGHT	2200' / (510)	2000' / (450)	1620' / (335)	1270' / (225)



OCA(H)		A	B	C	D								
Straight-in Approach	LNAV	890' (360') (110)	890' (360') (110)	890' (360') (110)	890' (360') (110)								
	LNAV/VNAV	780' (250') (80)	790' (260') (80)	800' (270') (85)	820' (290') (90)								
Circling		1040' (510') (155)	1050' (520') (160)	1150' (620') (190)	1230' (690') (215)								
GROUND SPEED		km/h	150	180	210	240	270	300	330	360	390	420	450
RATE OF DESCENT		m/s	2.2	2.6	3.0	3.5	3.9	4.3	4.8	5.2	5.6	6.1	6.5
		ft/min	427	512	597	682	768	853	938	1024	1109	1194	1280

1 TRANSITION LEVEL:
 - FL060 when QNH is 1013 hPa (760mm mercury column) or above;
 - FL070 when QNH is 977 hPa (733mm mercury column) or above, but less than 1013 hPa (760mm mercury column);
 - FL080 when QNH is less than 977 hPa (733mm mercury column).

WARNING
 Visual manoeuvring west of the AD is PROHIBITED.

MAPt at RW01. Timing not authorized for defining MAPt.

CHANGE: New chart