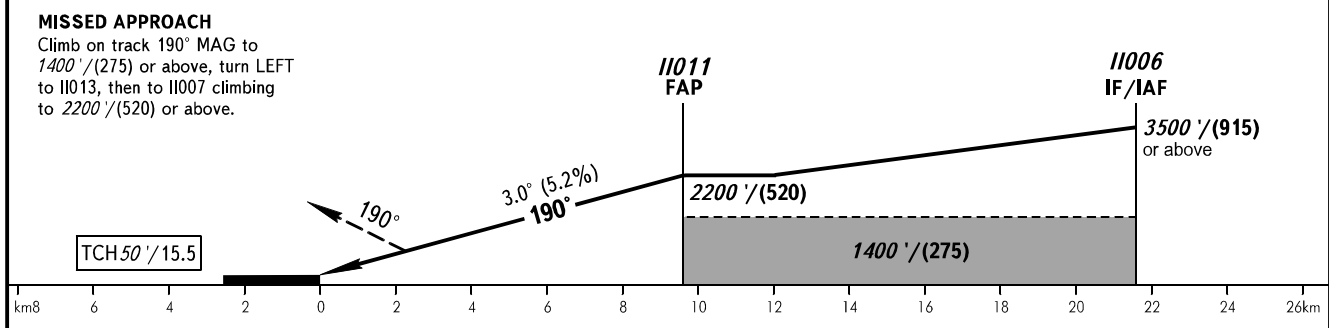
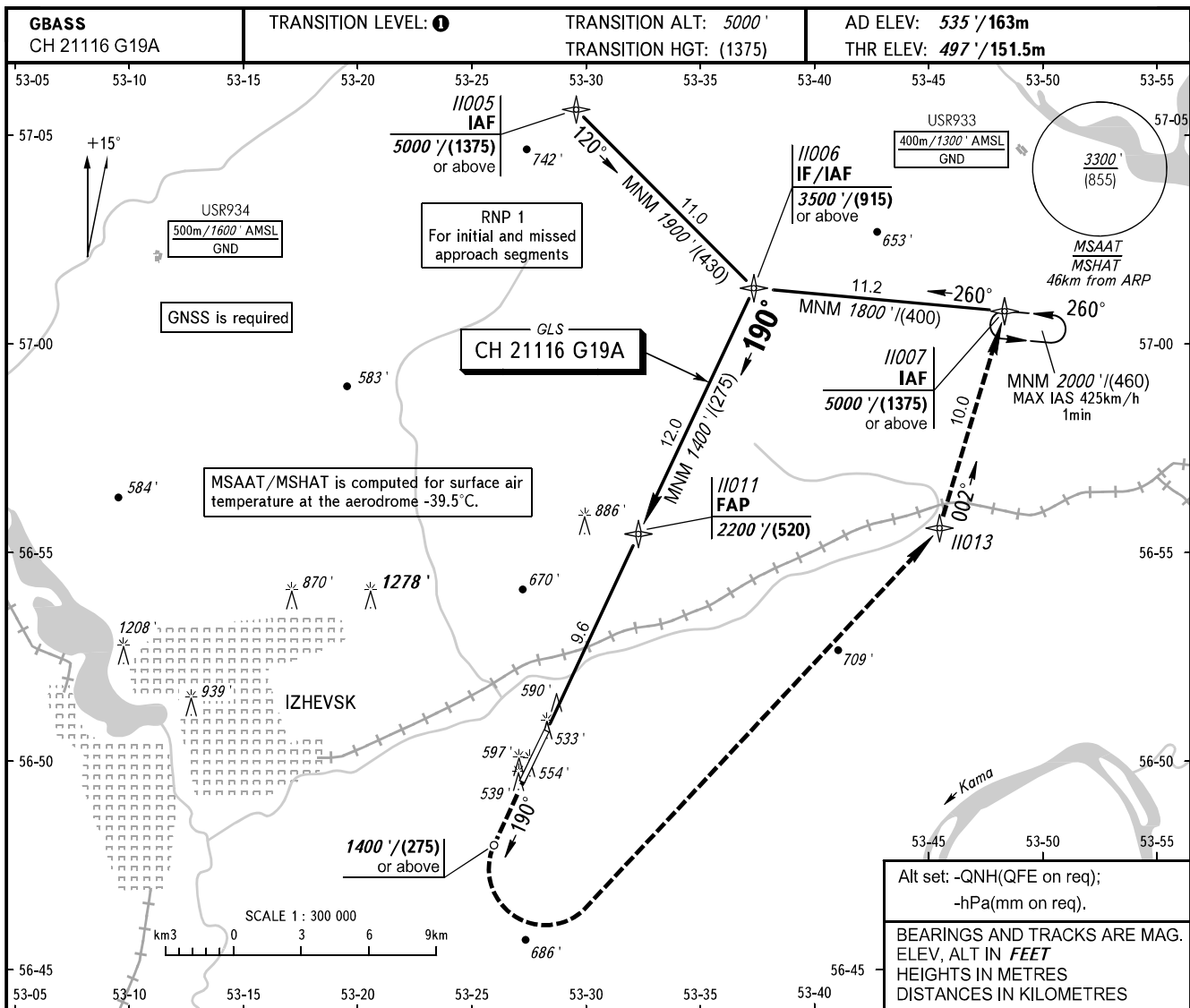


**INSTRUMENT  
APPROACH  
CHART - ICAO**

TOWER 120.400

**IZHEVSK, RUSSIA**  
IZHEVSK  
GLS RWY 19



OCA(H)	A	B	C	D								
Straight-in Approach	720' (223') (68)	732' (235') (72)	740' (243') (74)	751' (254') (77)								
Circling	1040' (510') (155)	1050' (520') (160)	1150' (620') (190)	1230' (690') (215)								
GROUND SPEED	km/h	150	180	210	240	270	300	330	360	390	420	450
RATE OF DESCENT	m/s	2.2	2.6	3.0	3.5	3.9	4.3	4.8	5.2	5.6	6.1	6.5
	ft/min	427	512	597	682	768	853	938	1024	1109	1194	1280

**1** TRANSITION LEVEL:  
 - FL060 when QNH is 1013 hPa (760mm mercury column) or above;  
 - FL070 when QNH is 977 hPa (733mm mercury column) or above, but less than 1013 hPa (760mm mercury column);  
 - FL080 when QNH is less than 977 hPa (733mm mercury column).

**WARNING**  
 Visual manoeuvring west of the AD is PROHIBITED.