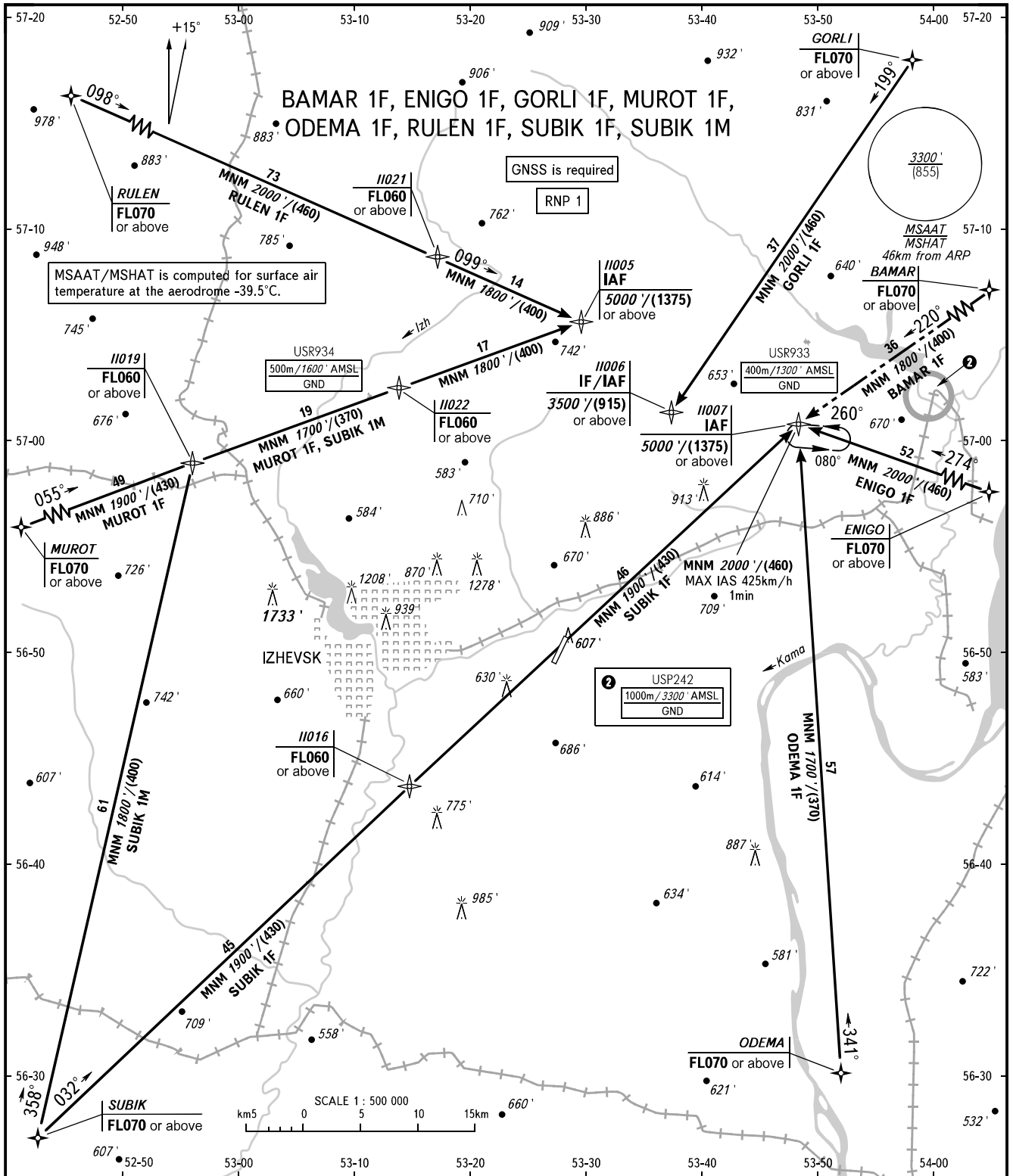


STANDARD ARRIVAL CHART  
INSTRUMENT (STAR) - ICAO

IZHEVSK, RUSSIA  
IZHEVSK  
RNP RWY 19

TRANSITION  
LEVEL: **1**



TOWER 120.400

- 1** TRANSITION LEVEL:
- FL060 when QNH is 1013 hPa (760mm mercury column) or above;
  - FL070 when QNH is 977 hPa (733mm mercury column) or above, but less than 1013 hPa (760mm mercury column);
  - FL080 when QNH is less than 977 hPa (733mm mercury column).

**WARNING**  
BAMAR 1F is AVBL by ATS unit instruction.

BEARINGS AND TRACKS ARE MAGNETIC  
ALTITUDES AND ELEVATIONS IN FEET  
HEIGHTS IN METRES  
DISTANCES IN KILOMETRES

Alt set: -QNH(QFE on req);  
-hPa(mm on req).