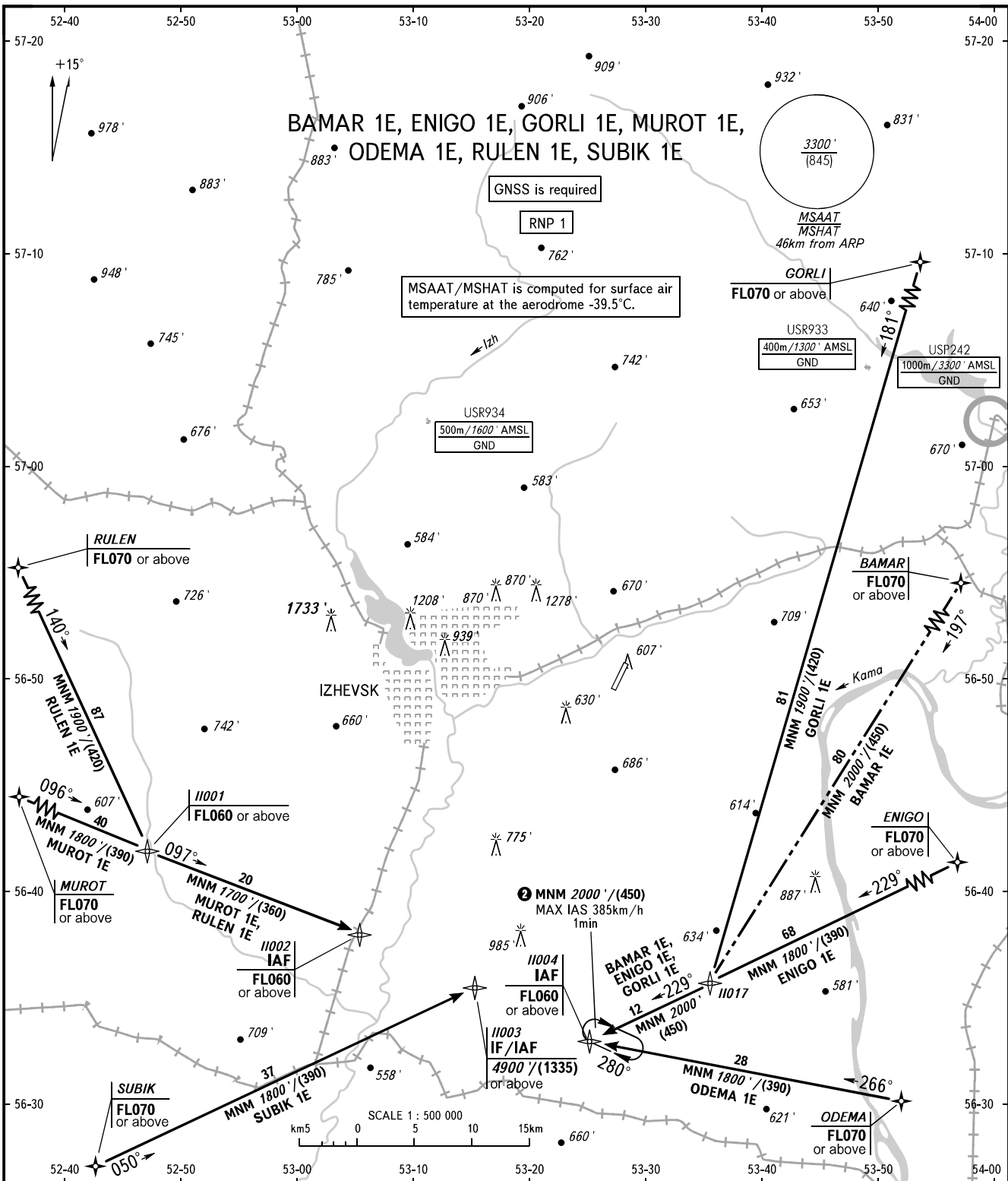


STANDARD ARRIVAL CHART
INSTRUMENT (STAR) - ICAO

IZHEVSK, RUSSIA
IZHEVSK
RNP RWY 01

TRANSITION
LEVEL: **1**



TOWER 120.400

- 1** TRANSITION LEVEL:
 - FL060 when QNH is 1013 hPa (760mm mercury column) or above;
 - FL070 when QNH is 977 hPa (733mm mercury column) or above, but less than 1013 hPa (760mm mercury column);
 - FL080 when QNH is less than 977 hPa (733mm mercury column).
- 2** Fly below FL060 by ATS unit instruction during PIROGOVO AD OPR HR.

WARNING:

- SUBIK 1E - pass PIROGOVO AD (during AD OPR HR) under control of ATS unit.
- BAMAR 1E is AVBL by ATS unit instruction.

BEARINGS AND TRACKS ARE MAGNETIC
ALTITUDES AND ELEVATIONS IN FEET
HEIGHTS IN METRES
DISTANCES IN KILOMETRES

Alt set: -QNH(QFE on req);
-hPa(mm on req).