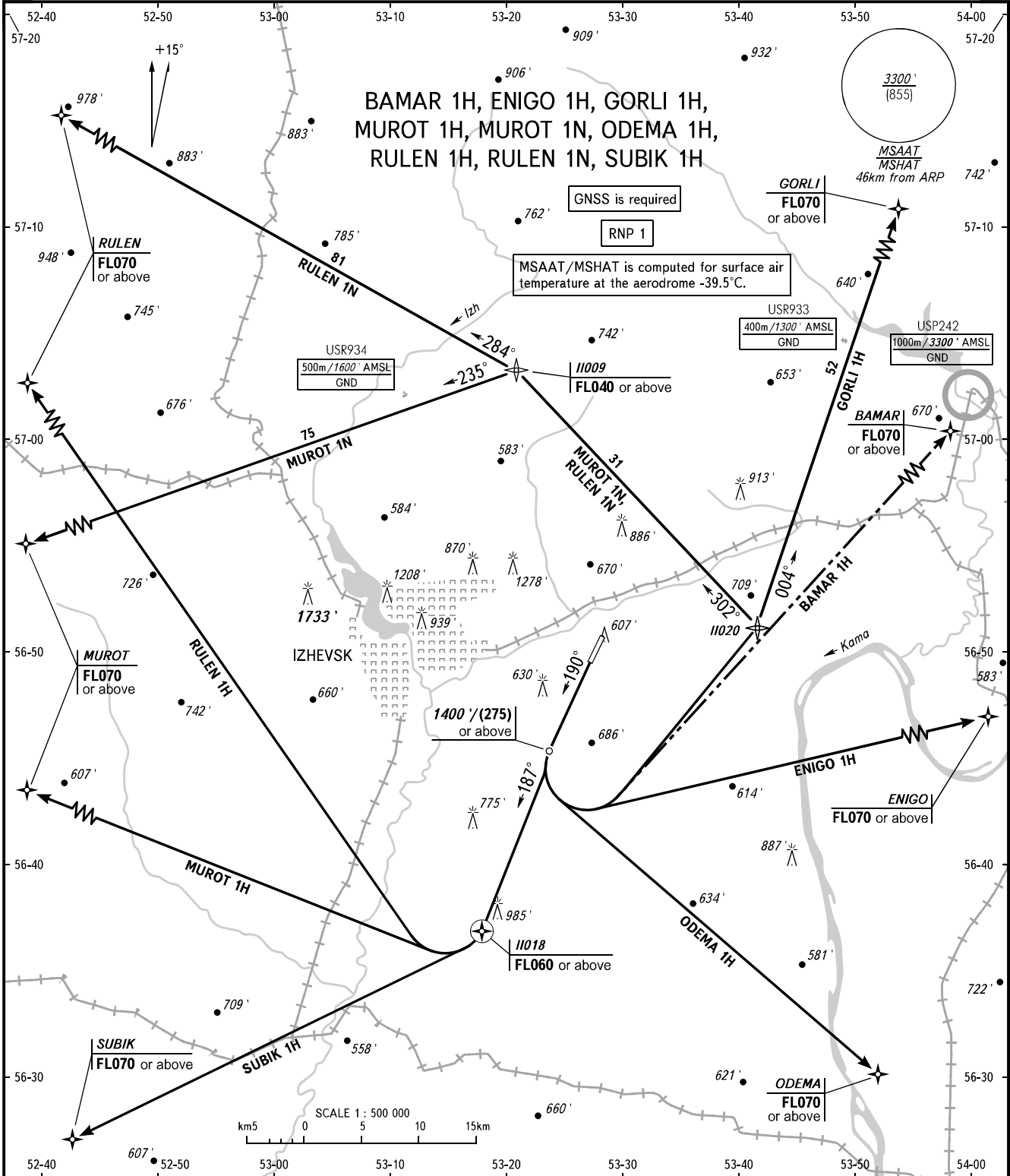


STANDARD DEPARTURE CHART
INSTRUMENT (SID) - ICAO

TRANSITION ALT: 5000'
TRANSITION HGT: (1375)

IZHEVSK, RUSSIA
IZHEVSK
RNP RWY 19



TOWER 120.400

WARNING:

1. MNM climb gradient due to the airspace structure is 4.0% up to FL070 for ODEMA 1H.
 2. BAMA 1H is AVBL by ATS unit instruction.
 3. MNM climb gradient due to the airspace structure is 6.7% up to FL060 for MUROT 1H, RULEN 1H, SUBIK 1H.
- Execute departure making 3° turn-away from RCL.
If unable to maintain climb gradient 6.7%, execute departure as instructed by ATS unit.

BEARINGS AND TRACKS ARE MAGNETIC
ALTITUDES AND ELEVATIONS IN FEET
HEIGHTS IN METRES
DISTANCES IN KILOMETRES

Alt set: -QNH(QFE on req);
-hPa(mm on req).