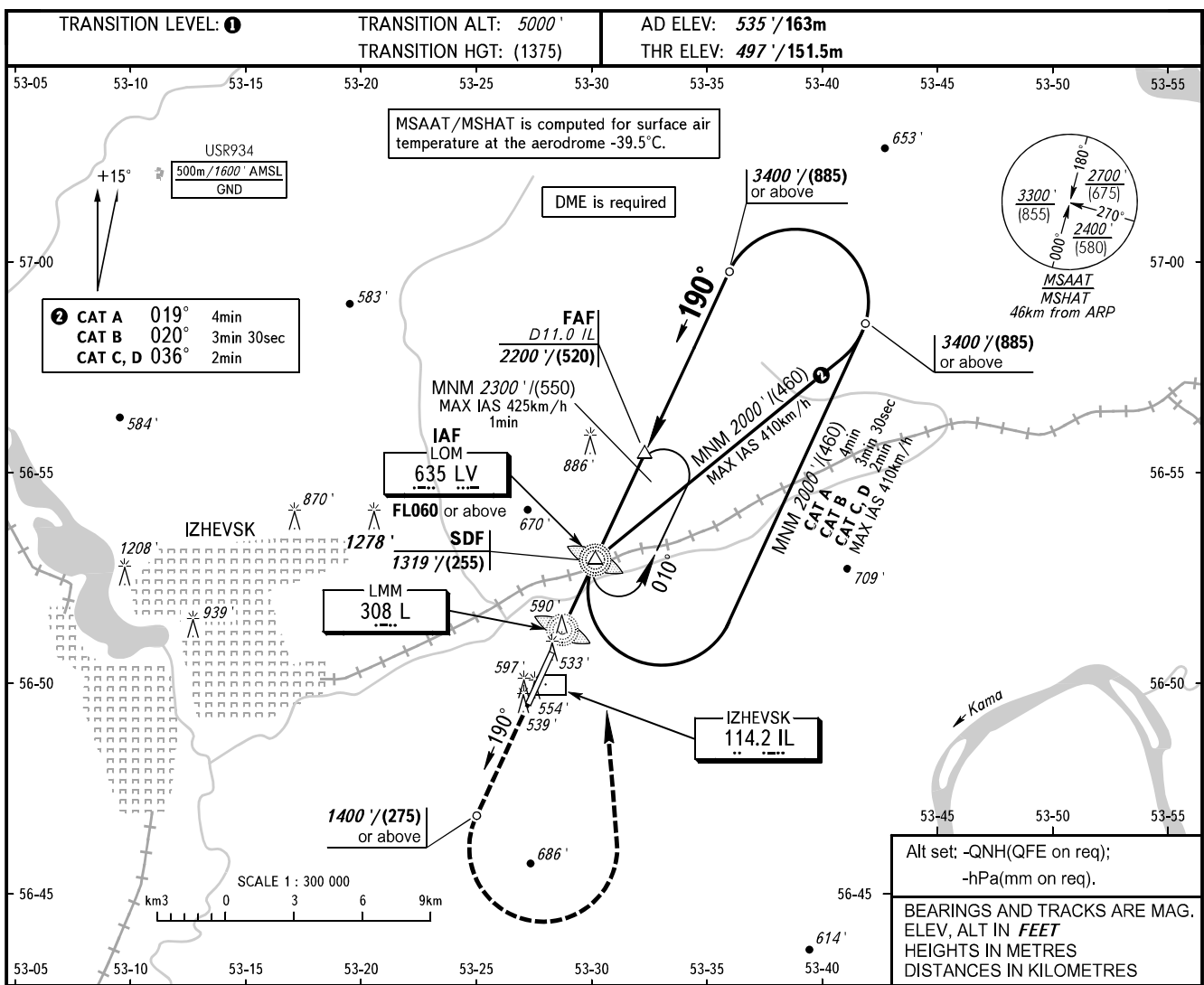


**INSTRUMENT
APPROACH
CHART - ICAO**

TOWER **120.400**

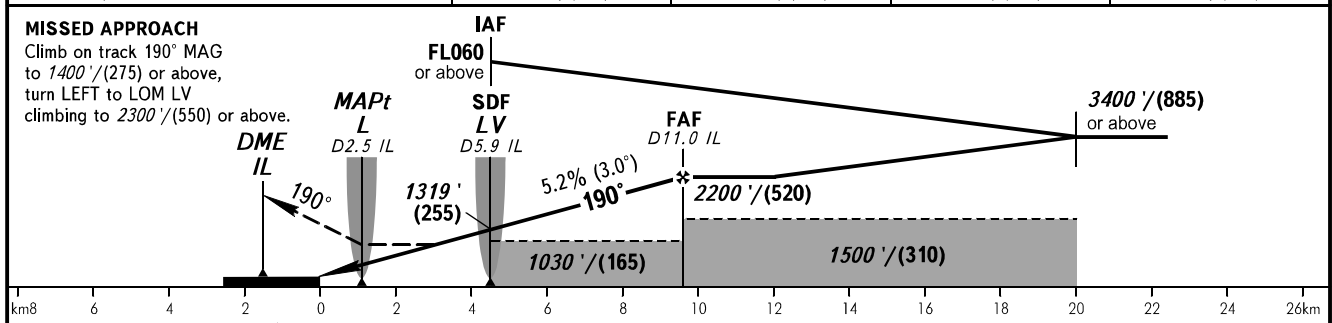
IZHEVSK, RUSSIA
IZHEVSK
NDB RWY 19



Alt set: -QNH(QFE on req);
-hPa(mm on req).

BEARINGS AND TRACKS ARE MAG.
ELEV, ALT IN FEET
HEIGHTS IN METRES
DISTANCES IN KILOMETRES

DME IL	6.0	8.0	10.0	11.0
ALTITUDE/HEIGHT	1340'/(260)	1680'/(365)	2020'/(465)	2200'/(520)



OCA(H)		A	B	C	D
Straight-in Approach	WO SDF	1030' (540') (165)	1030' (540') (165)	1030' (540') (165)	1030' (540') (165)
	With SDF	840' (340') (105)	840' (340') (105)	840' (340') (105)	840' (340') (105)
Circling		1040' (510') (155)	1050' (520') (160)	1150' (620') (190)	1230' (690') (215)

1 TRANSITION LEVEL:
- FL060 when QNH is 1013 hPa (760mm mercury column) or above;
- FL070 when QNH is 977 hPa (733mm mercury column) or above, but less than 1013 hPa (760mm mercury column);
- FL080 when QNH is less than 977 hPa (733mm mercury column).

WARNING
Visual manoeuvring west of the AD is PROHIBITED.

MAPt at LMM L. Timing not authorized for defining MAPt.

GROUND SPEED	km/h	150	180	210	240	270	300	330	360	390	420	450
RATE OF DESCENT	m/s	2.2	2.6	3.0	3.5	3.9	4.3	4.8	5.2	5.6	6.1	6.5
	ft/min	427	512	597	682	768	853	938	1024	1109	1194	1280

CHANGE: New chart