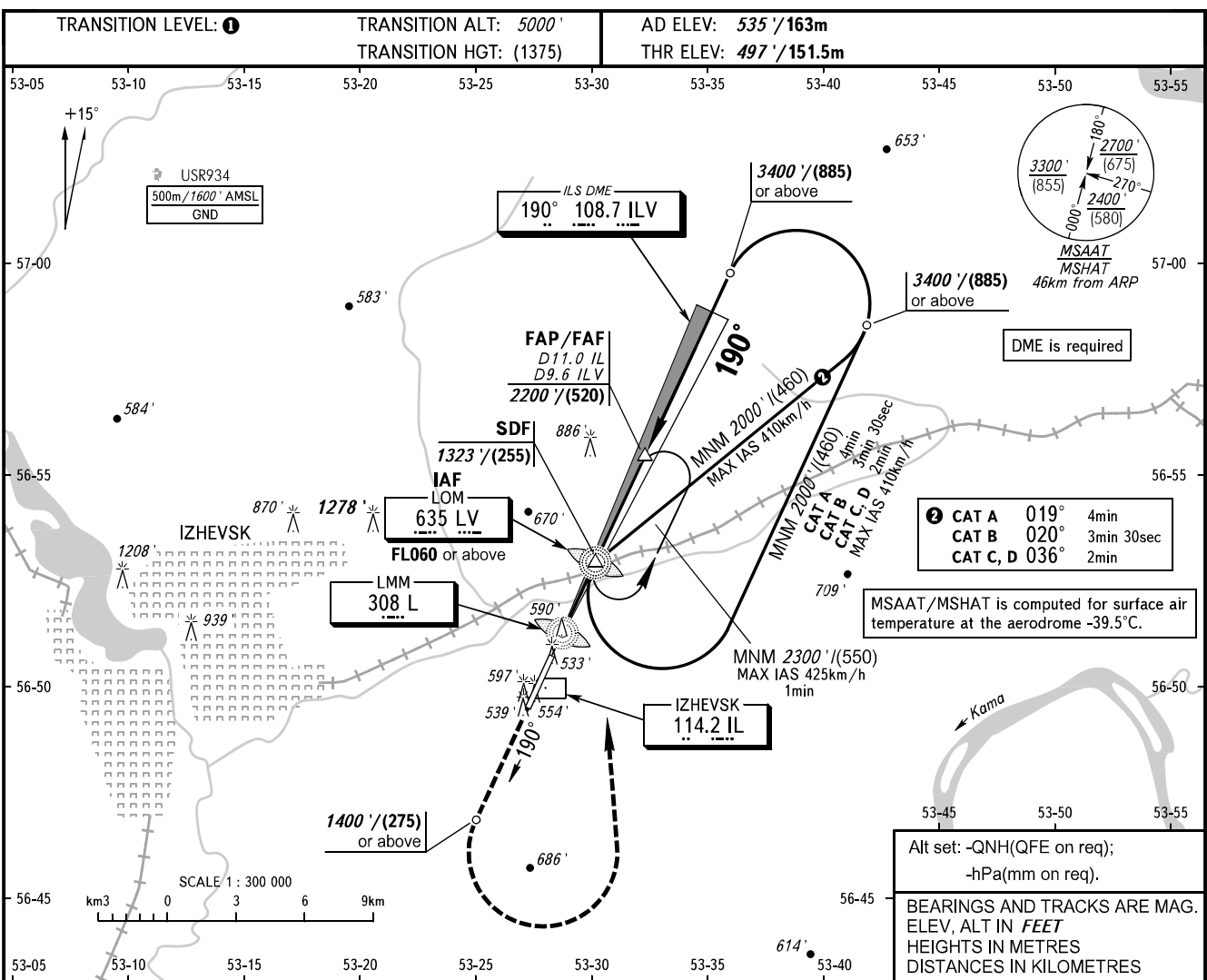


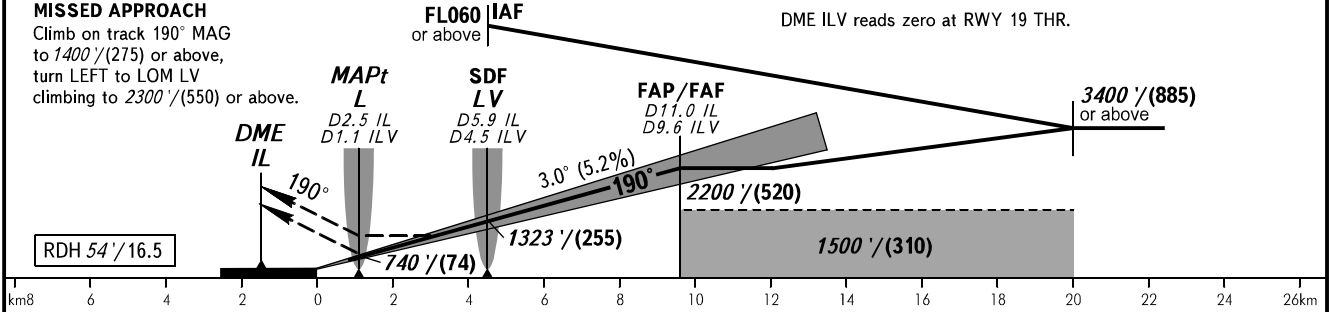
**INSTRUMENT
APPROACH
CHART - ICAO**

TOWER **120.400**

IZHEVSK, RUSSIA
IZHEVSK
ILS Y, LOC Y RWY 19



DME ILV	2.0	4.0	6.0	8.0	9.6
ALTITUDE/HEIGHT	900'/(125)	1240'/(230)	1580'/(330)	1920'/(435)	2200'/(520)



OCA(H)		A	B	C	D								
Straight-in Approach	LOC	WO SDF	720' (223') (68)	732' (235') (72)	740' (243') (74)	751' (254') (77)							
		With SDF	950' (460') (140)	950' (460') (140)	950' (460') (140)	950' (460') (140)							
		With SDF	820' (320') (100)	820' (320') (100)	820' (320') (100)	820' (320') (100)							
Circling		1040' (510') (155)	1050' (520') (160)	1150' (620') (190)	1230' (690') (215)								
GROUND SPEED		km/h	150	180	210	240	270	300	330	360	390	420	450
RATE OF DESCENT		m/s	2.2	2.6	3.0	3.5	3.9	4.3	4.8	5.2	5.6	6.1	6.5
		ft/min	427	512	597	682	768	853	938	1024	1109	1194	1280

1 TRANSITION LEVEL:
- FL060 when QNH is 1013 hPa (760mm mercury column) or above;
- FL070 when QNH is 977 hPa (733mm mercury column) or above, but less than 1013 hPa (760mm mercury column);
- FL080 when QNH is less than 977 hPa (733mm mercury column).

WARNING:
1. Visual manoeuvring west of the AD is PROHIBITED.
2. High-voltage electric transmission line influences the amplitude of glide path bend within allowed values.
MAPt (LOC) at LMM L. Timing not authorized for defining MAPt.

CHANGE: New chart