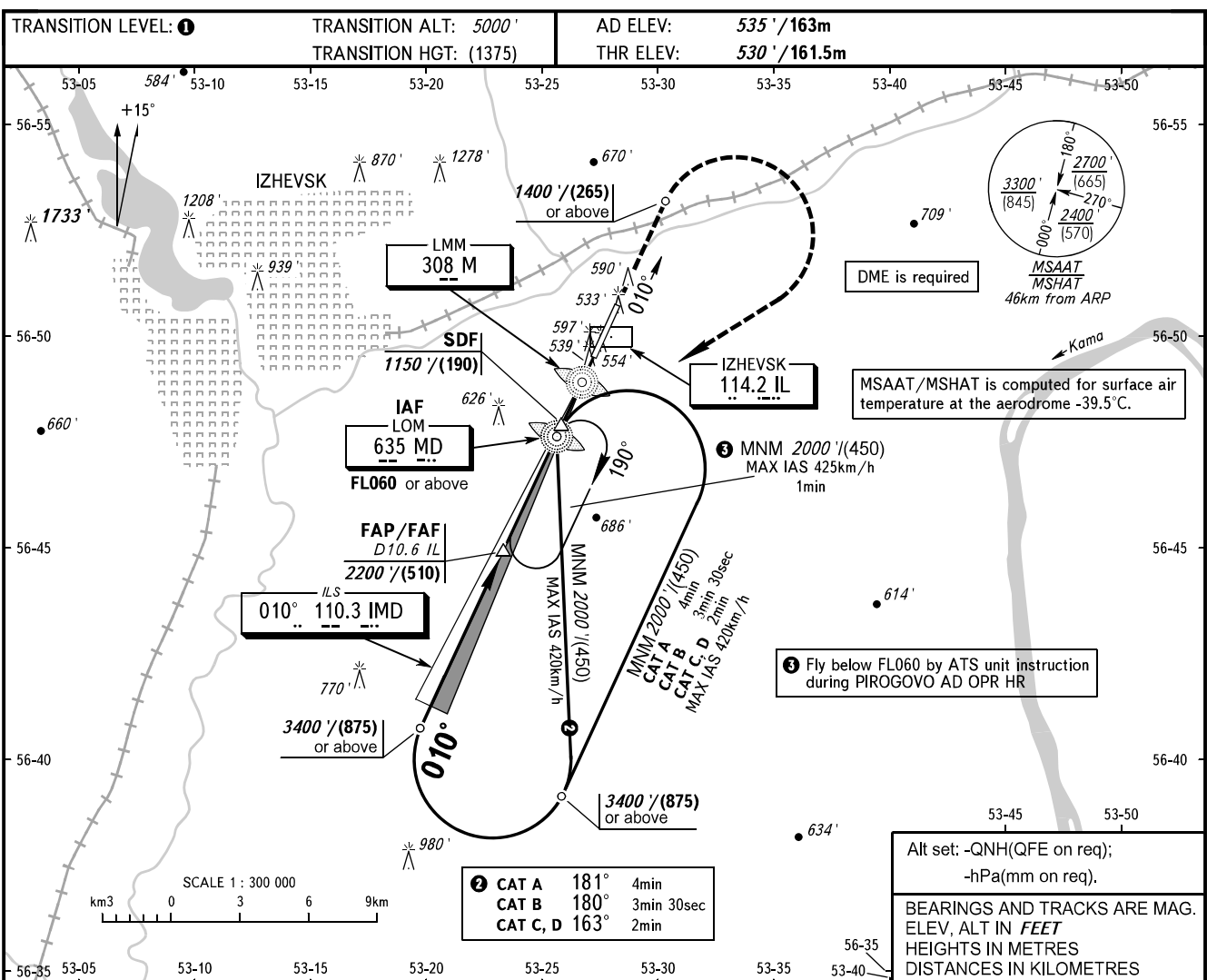


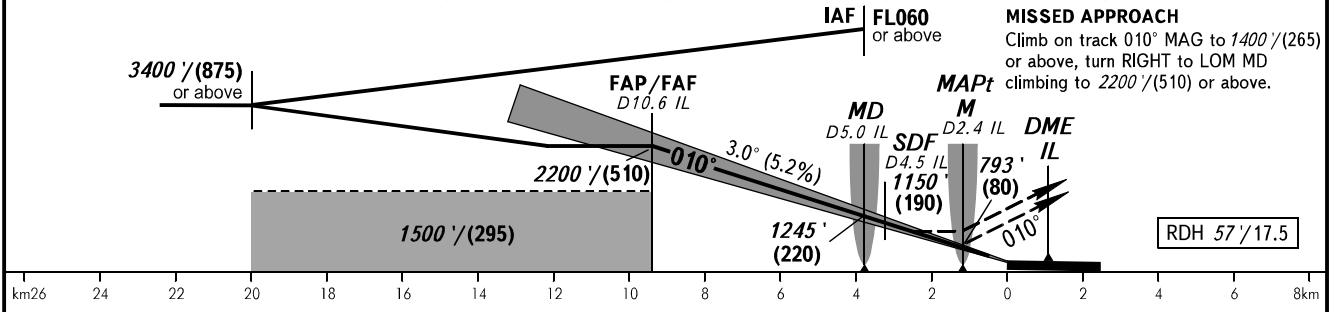
**INSTRUMENT
APPROACH
CHART - ICAO**

**IZHEVSK, RUSSIA
IZHEVSK
ILS Y, LOC Y RWY 01**

TOWER 120.400



DME IL	10.6	10.0	8.0	6.0	4.0
ALTITUDE/HEIGHT	2200' / (510)	2100' / (480)	1760' / (375)	1420' / (275)	1080' / (170)



OCA(H)		A	B	C	D	
Straight-in Approach	LOC	WO SDF	729' (199') (61)	741' (211') (64)	749' (219') (67)	760' (230') (70)
		With SDF	890' (360') (110)	890' (360') (110)	890' (360') (110)	890' (360') (110)
		Circling	1040' (510') (155)	1050' (520') (160)	1150' (620') (190)	1230' (690') (215)

1 TRANSITION LEVEL:
 - FL060 when QNH is 1013 hPa (760mm mercury column) or above;
 - FL070 when QNH is 977 hPa (733mm mercury column) or above, but less than 1013 hPa (760mm mercury column);
 - FL080 when QNH is less than 977 hPa (733mm mercury column).

WARNING
 Visual manoeuvring west of the AD is PROHIBITED.

MAPt (LOC) at LMM M. Timing not authorized for defining MAPt.

GROUND SPEED	km/h	150	180	210	240	270	300	330	360	390	420	450
RATE OF DESCENT	m/s	2.2	2.6	3.0	3.5	3.9	4.3	4.8	5.2	5.6	6.1	6.5
	ft/min	427	512	597	682	768	853	938	1024	1109	1194	1280

CHANGE: New chart