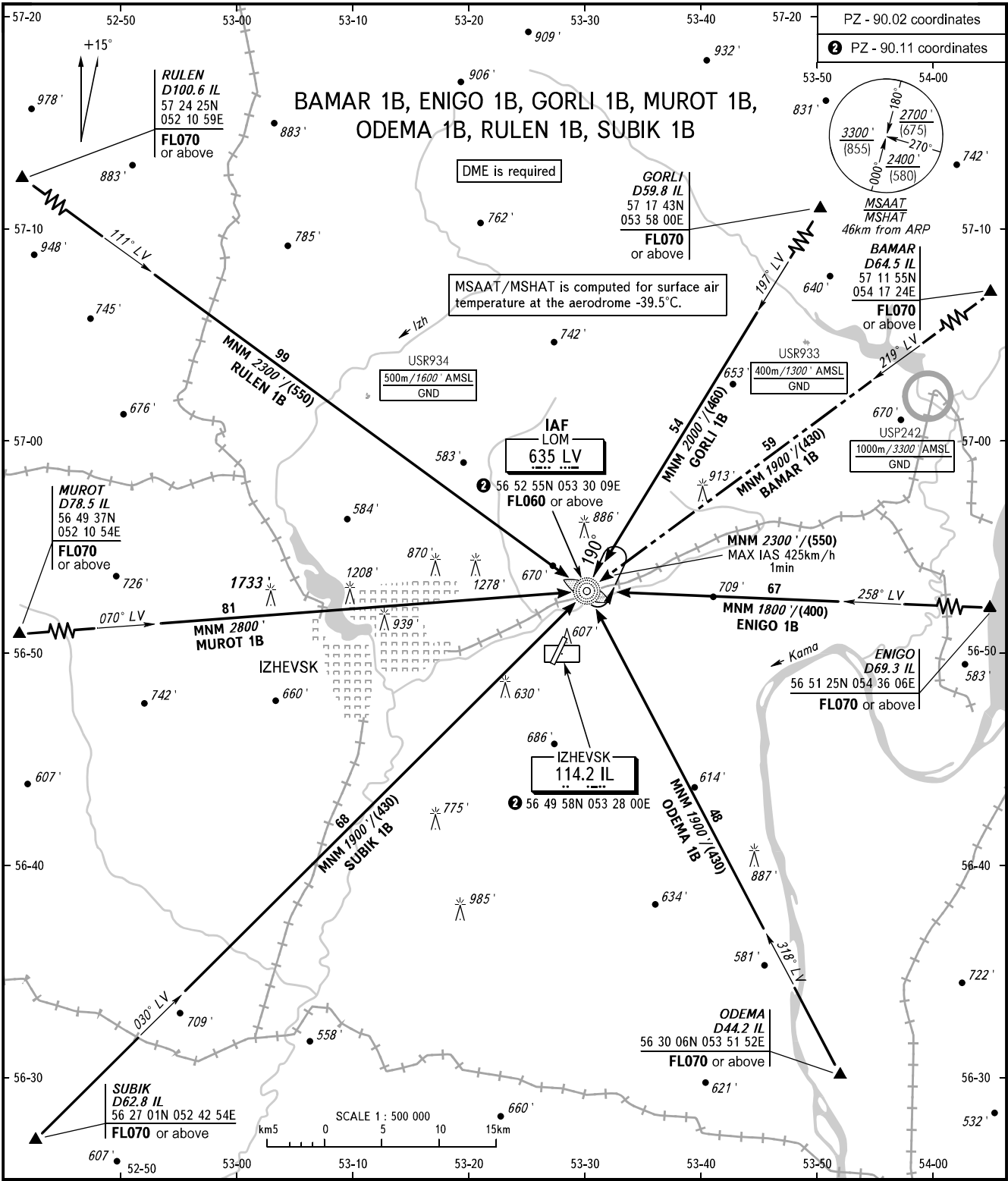


STANDARD ARRIVAL CHART
INSTRUMENT (STAR) - ICAO

IZHEVSK, RUSSIA
IZHEVSK
RWY 19

TRANSITION
LEVEL: **1**



<p>TOWER 120.400</p>	<p>1 TRANSITION LEVEL: - FL060 when QNH is 1013 hPa (760mm mercury column) or above; - FL070 when QNH is 977 hPa (733mm mercury column) or above, but less than 1013 hPa (760mm mercury column); - FL080 when QNH is less than 977 hPa (733mm mercury column).</p> <p>WARNING BAMAR 1B is AVBL by ATS unit instruction.</p>
<p>BEARINGS AND TRACKS ARE MAGNETIC ALTITUDES AND ELEVATIONS IN FEET HEIGHTS IN METRES DISTANCES IN KILOMETRES</p>	<p>Alt set: -QNH(QFE on req); -hPa(mm on req).</p>