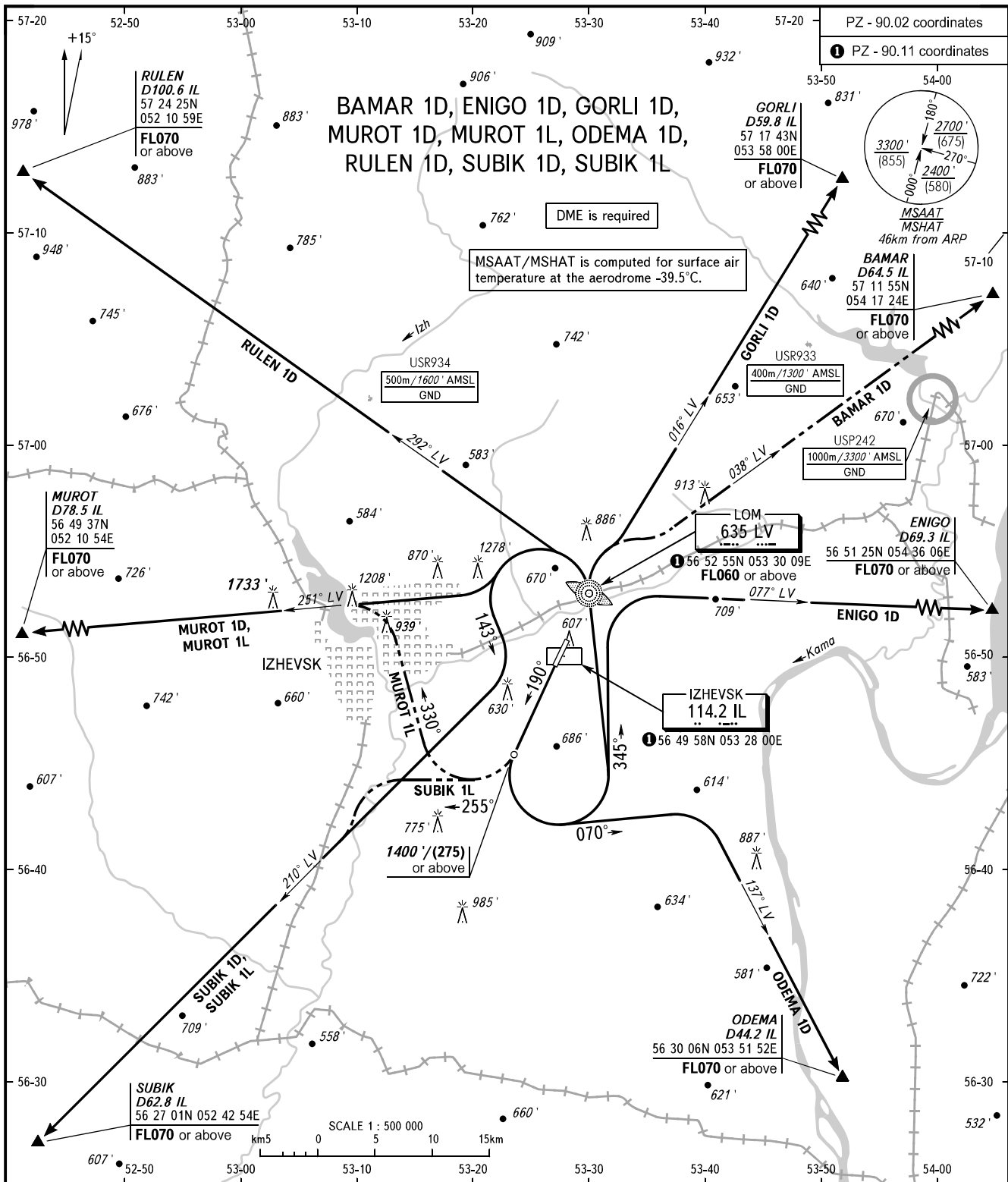


STANDARD DEPARTURE CHART
INSTRUMENT (SID) - ICAO

IZHEVSK, RUSSIA
IZHEVSK
RWY 19

TRANSITION ALT: 5000'
TRANSITION HGT: (1375)



TOWER 120.400

WARNING:

1. MNM climb gradient due to the airspace structure is 3.6% up to FL070 for ODEMA 1D.
2. BAMAR 1D, MUROT 1L, SUBIK 1L are AVBL by ATS unit instruction.

BEARINGS AND TRACKS ARE MAGNETIC
ALTITUDES AND ELEVATIONS IN FEET
HEIGHTS IN METRES
DISTANCES IN KILOMETRES

Alt set: -QNH(QFE on req);
-hPa(mm on req).