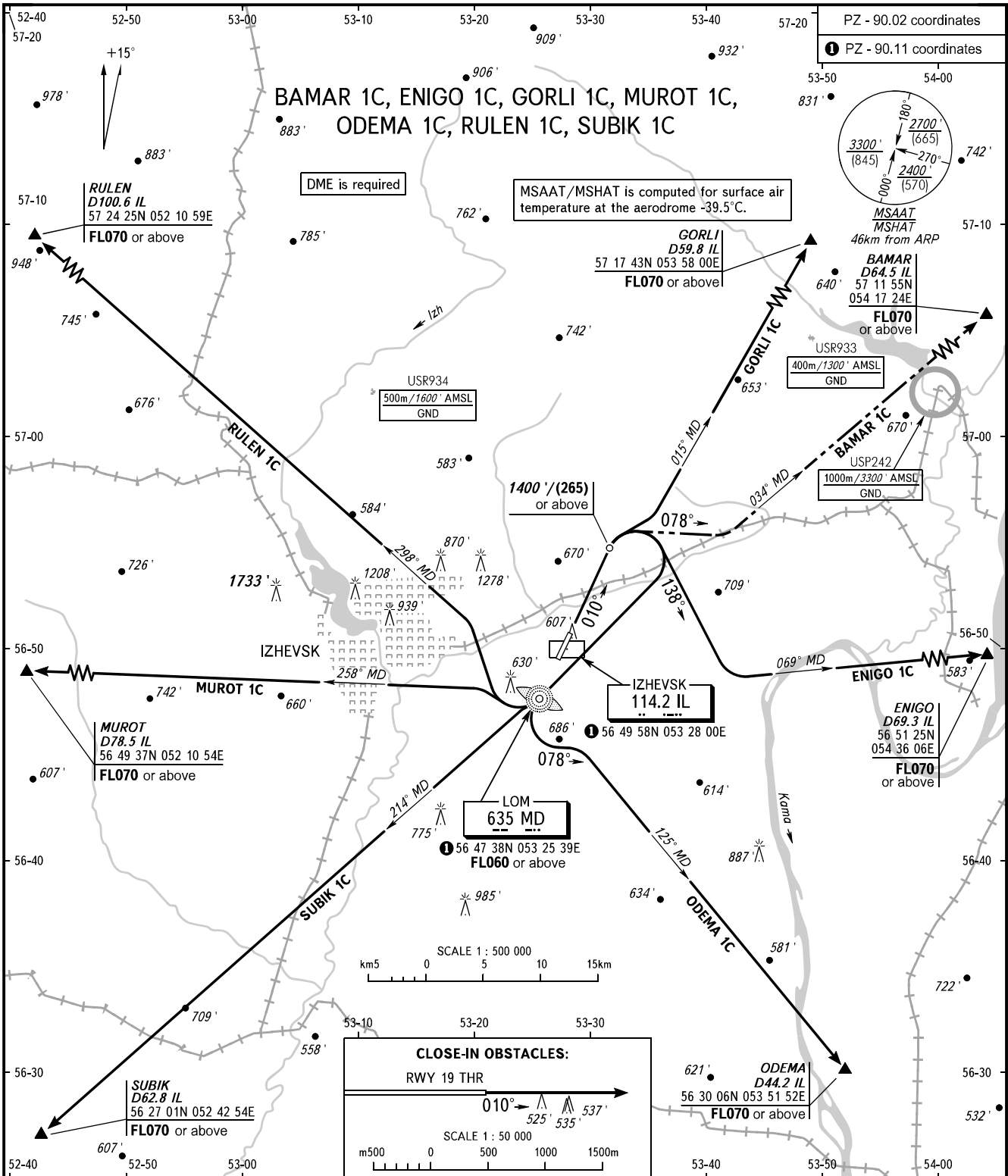


STANDARD DEPARTURE CHART
INSTRUMENT (SID) - ICAO

TRANSITION ALT: **5000'**
TRANSITION HGT: **(1375)**

IZHEVSK, RUSSIA
IZHEVSK
RWY 01



TOWER **120.400**

WARNING:

1. MNM climb gradient due to the airspace structure is 3.4% up to FL070 for GORLI 1C.
2. BAMAR 1C is AVBL by ATS unit instruction.

BEARINGS AND TRACKS ARE MAGNETIC
ALTITUDES AND ELEVATIONS IN **FEET**
HEIGHTS IN METRES
DISTANCES IN KILOMETRES

Alt set: -QNH(QFE on req);
-hPa(mm on req).