

ATC SURVEILLANCE MINIMUM
ALTITUDE CHART - ICAO

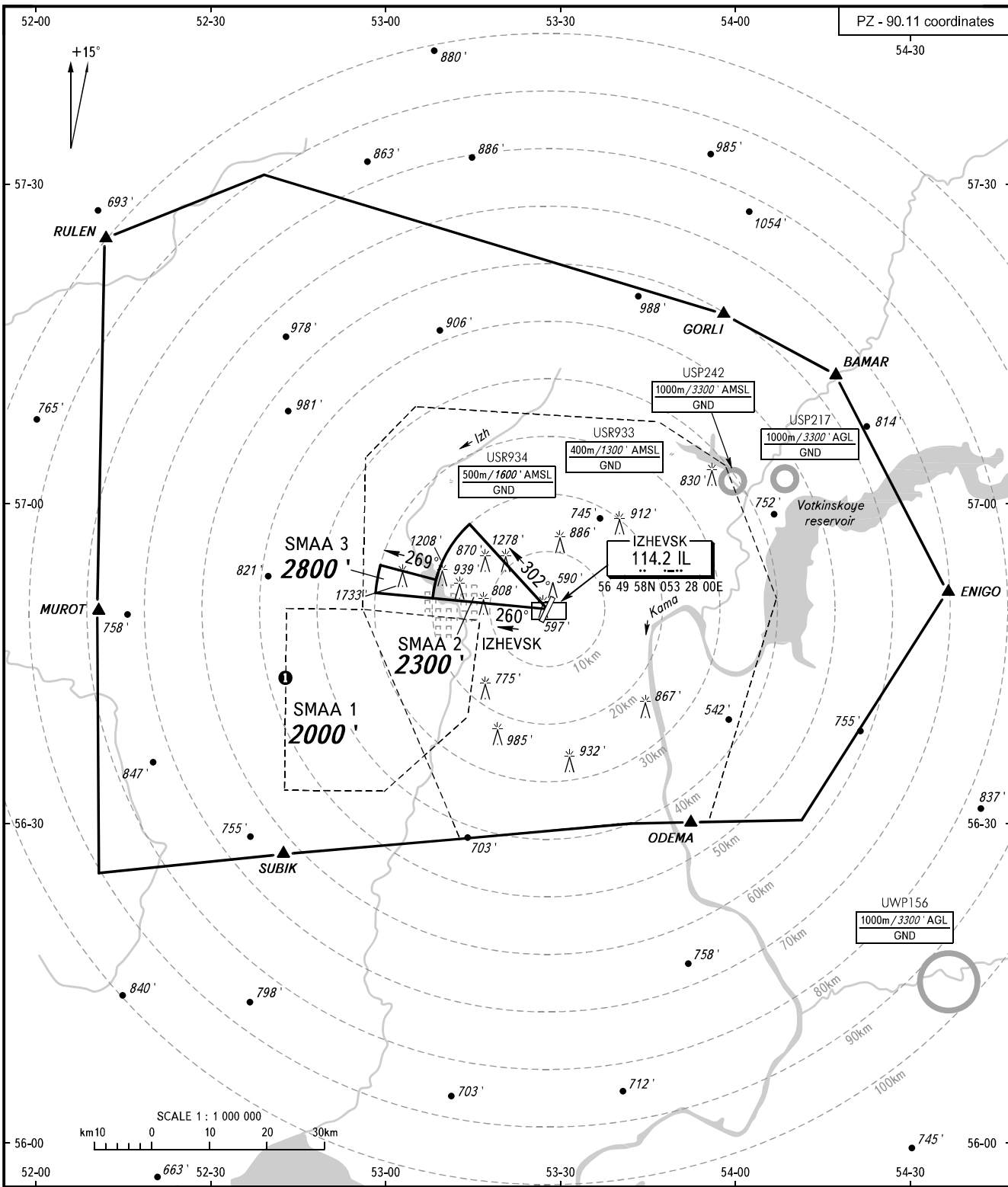
IZHEVSK, RUSSIA

IZHEVSK

ELEV
535 / 163m

TRANSITION ALT: 5000'
TRANSITION HGT: (1375)

PZ - 90.11 coordinates



TOWER 120.400

PIROGOVO AD CTR (from GND up to FL050 during AD OPR HR).

WARNING:

- When vectoring is carried out under low-temperature conditions, minimum vectoring altitudes for IFR flight must be corrected by altimeter temperature correction.
- The chart may only be used for cross-checking of altitudes assigned while the aircraft is identified under radar control.
- COMMUNICATION FAILURE: In accordance with the procedures described in AIP. SMAA coordinates are on reverse side of this page.

BEARINGS AND TRACKS ARE MAGNETIC
ALTITUDES AND ELEVATIONS IN FEET
HEIGHTS IN METRES
DISTANCES IN KILOMETRES

Alt set: -QNH(QFE on req);
-hPa(mm on req).

CHANGE: New chart

IZHEVSK, RUSSIA
IZHEVSK

SURVEILLANCE MINIMUM ALTITUDE AREAS		
IDENT	MNM ALT, (ft)	LATERAL LIMITS (PZ-90.11 coordinates)
SMAA 1	2000	572425.00N 0521059.00E – 573036.00N 0523830.00E – 571743.00N 0535800.00E – 571155.00N 0541724.00E – 565125.00N 0543606.00E – 563014.00N 0541050.00E – 563006.00N 0535152.00E – 563001.11N 0534155.29E – 562834.00N 0531246.00E – 562701.00N 0524254.00E – 562500.00N 0521200.00E – 564937.00N 0521054.00E – 572425.00N 0521059.00E, then 565006.60N 0532745.20E – 565133.87N 0525824.16E, then clockwise by arc of a circle radius of 30 KM centred at 565006.60N 0532745.20E to 565409.77N 0525912.55E – 565249.59N 0530843.6E, then clockwise by arc of a circle radius of 20 KM centred at 565006.60N 0532745.20E to 565802.45N 0531425.65E – 565006.60N 0532745.20E.
SMAA 2	2300	565006.60N 0532745.20E – 565802.45N 0531425.65E, then counterclockwise by arc of a circle radius of 20 KM centred at 565006.60N 0532745.20E to 565105.60N 0530810.32E – 565006.60N 0532745.20E.
SMAA 3	2800	565249.59N 0530843.06E – 565409.77N 0525912.55E, then counterclockwise by arc of a circle radius of 30 KM centred at 565006.60N 0532745.20E to 565133.87N 0525824.16E – 565105.60N 0530810.32E, then clockwise by arc of a circle radius of 20 KM centred at 565006.60N 0532745.20E to 565249.59N 0530843.06E.