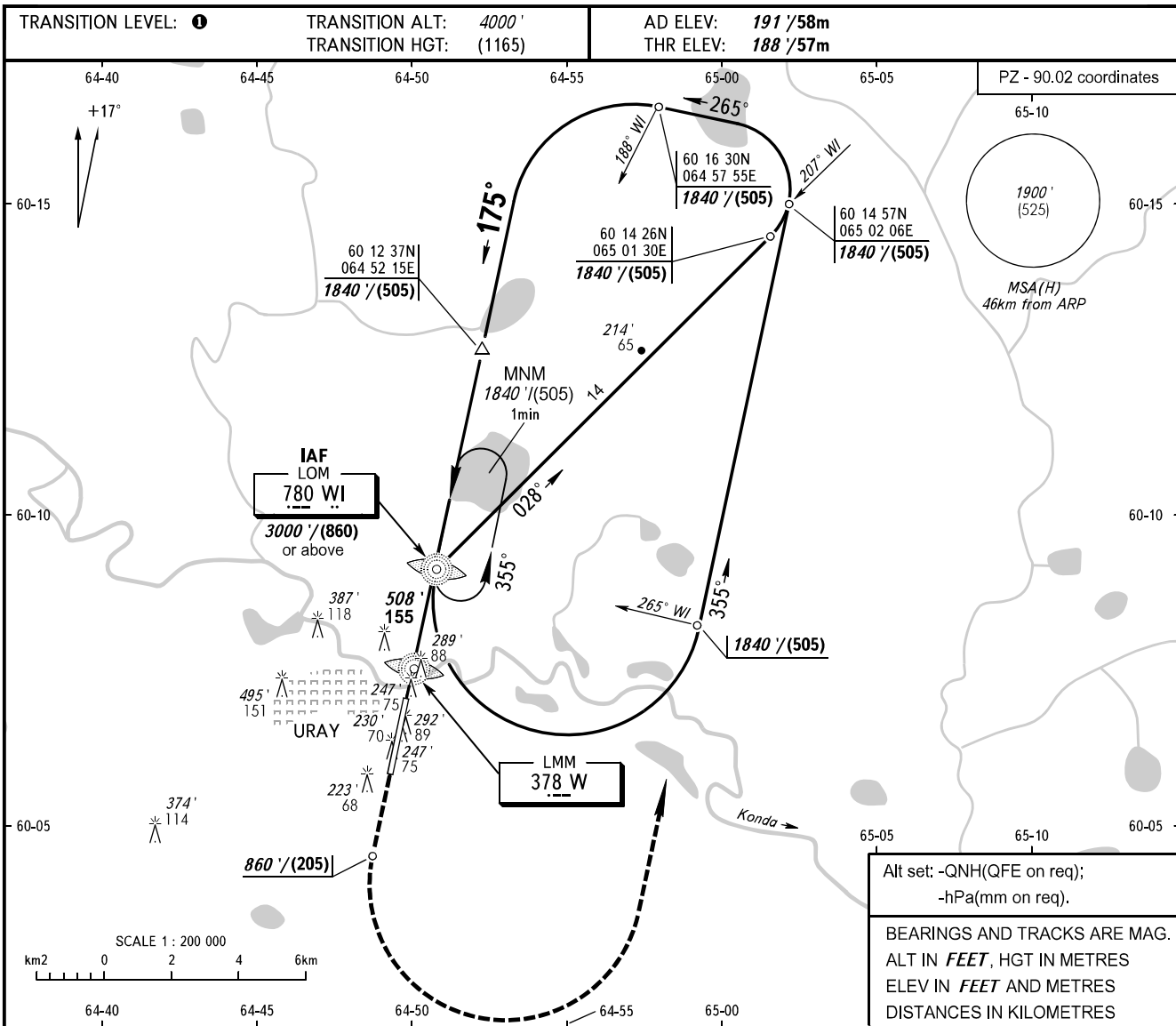


**INSTRUMENT
APPROACH
CHART - ICAO**

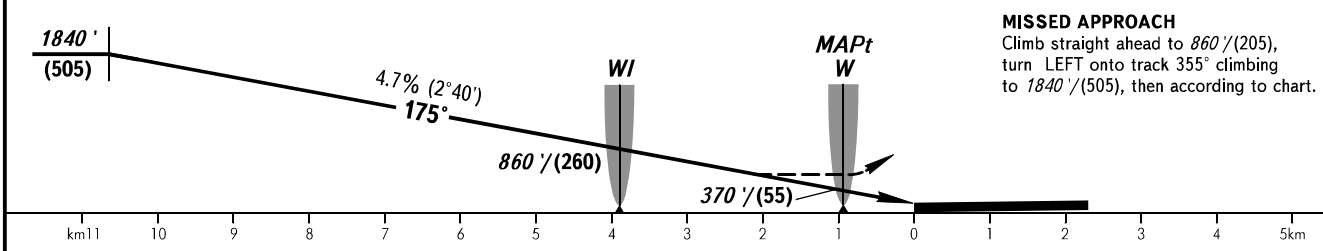
INFORMATSIYA **119.300**

URAY, RUSSIA
URAY
2 NDB, NDB RWY 18



Alt set: -QNH(QFE on req);
-hPa(mm on req).

BEARINGS AND TRACKS ARE MAG.
ALT IN FEET, HGT IN METRES
ELEV IN FEET AND METRES
DISTANCES IN KILOMETRES



MISSED APPROACH
Climb straight ahead to 860'/(205),
turn LEFT onto track 355° climbing
to 1840'/(505), then according to chart.

OCA(H)		A	B	C	D
Straight-in Approach	2 NDB	535' (348') (106)	535' (348') (106)	535' (348') (106)	535' (348') (106)
	NDB (LOM)	725' (538') (164)	725' (538') (164)	725' (538') (164)	725' (538') (164)
	NDB (LMM)	689' (502') (153)	689' (502') (153)	689' (502') (153)	689' (502') (153)
Circling		810' (623') (190)	810' (623') (190)	909' (722') (220)	909' (722') (220)

- TRANSITION LEVEL:**
- FL060 when QNH is 1000 hPa (750mm mercury column) or above;
 - FL070 when QNH is 977 hPa (733mm mercury column) or above, but less than 1000 hPa (750mm mercury column);
 - FL080 when QNH is less than 977 hPa (733mm mercury column).
- WARNING:**
1. ACFT executing IFR approach, have priority over other arriving ACFT.
 2. It is PROHIBITED to cross RWY 18 landing heading from the moment ACFT executing IFR approach turns onto the final approach track.
 3. It is PROHIBITED to cross take-off heading, when departing ACFT is at RWY 18/36 line-up position.

GROUND SPEED	km/h										
		150	180	210	240	270	300	330	360		
RATE OF DESCENT	m/s										
		1.9	2.3	2.7	3.1	3.5	3.9	4.3	4.7		
		ft/min									
		374	453	532	610	689	768	847	925		

CHANGE: New chart