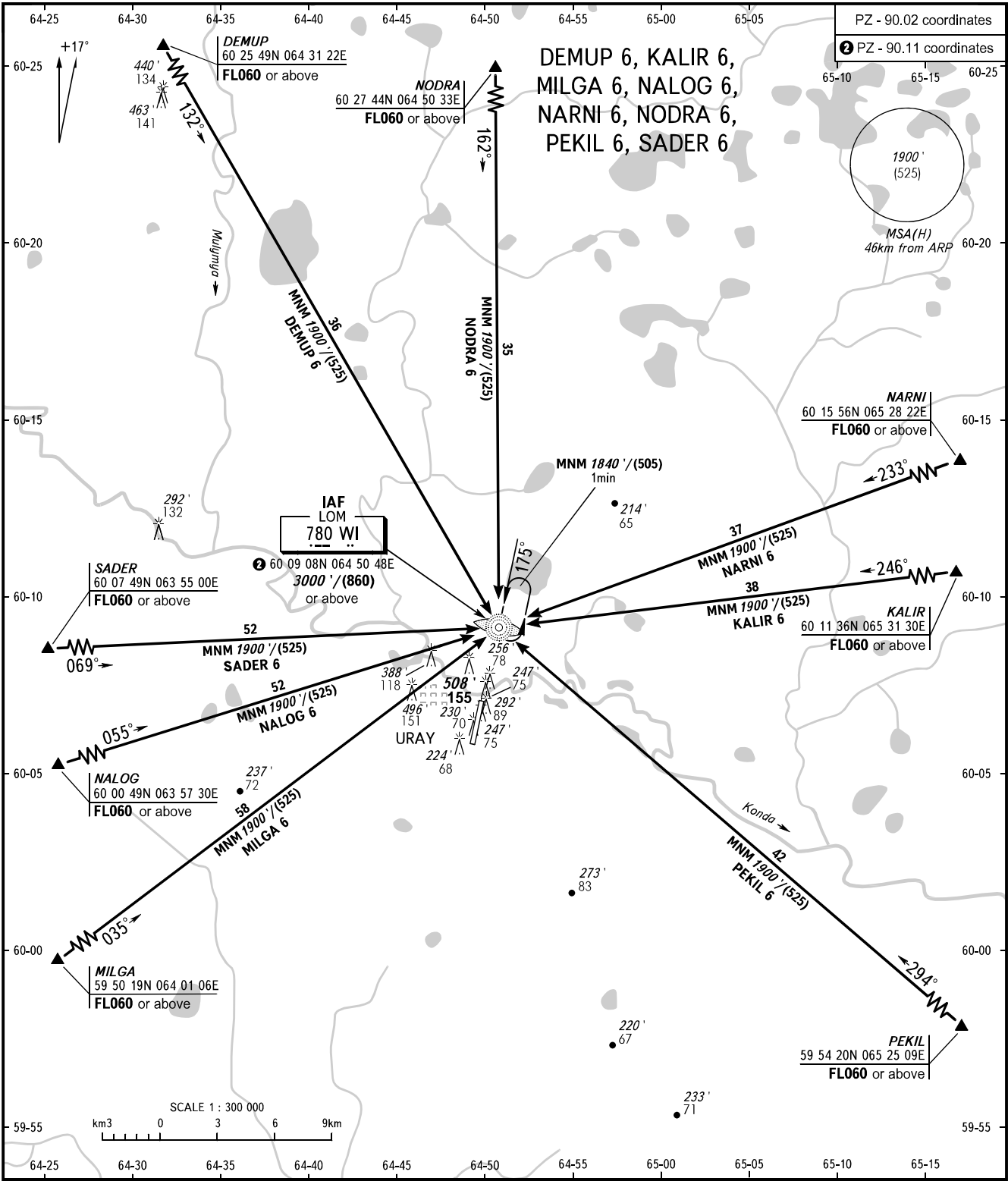


STANDARD ARRIVAL CHART
INSTRUMENT (STAR) - ICAO

URAY, RUSSIA
URAY
RWY 18

TRANSITION
LEVEL: 1



INFORMATSIYA 119.300

1 TRANSITION LEVEL:
 - FL060 when QNH is 1000 hPa (750mm mercury column) or above;
 - FL070 when QNH is 977 hPa (733mm mercury column) or above,
 but less than 1000 hPa (750mm mercury column);
 - FL080 when QNH is less than 977 hPa (733mm mercury column).

BEARINGS AND TRACKS ARE MAGNETIC ALTITUDES IN FEET ELEVATIONS IN FEET AND METRES HEIGHTS IN METRES DISTANCES IN KILOMETRES	Alt set: -QNH(QFE on req); -hPa(mm on req).
--	--

CHANGE: New chart