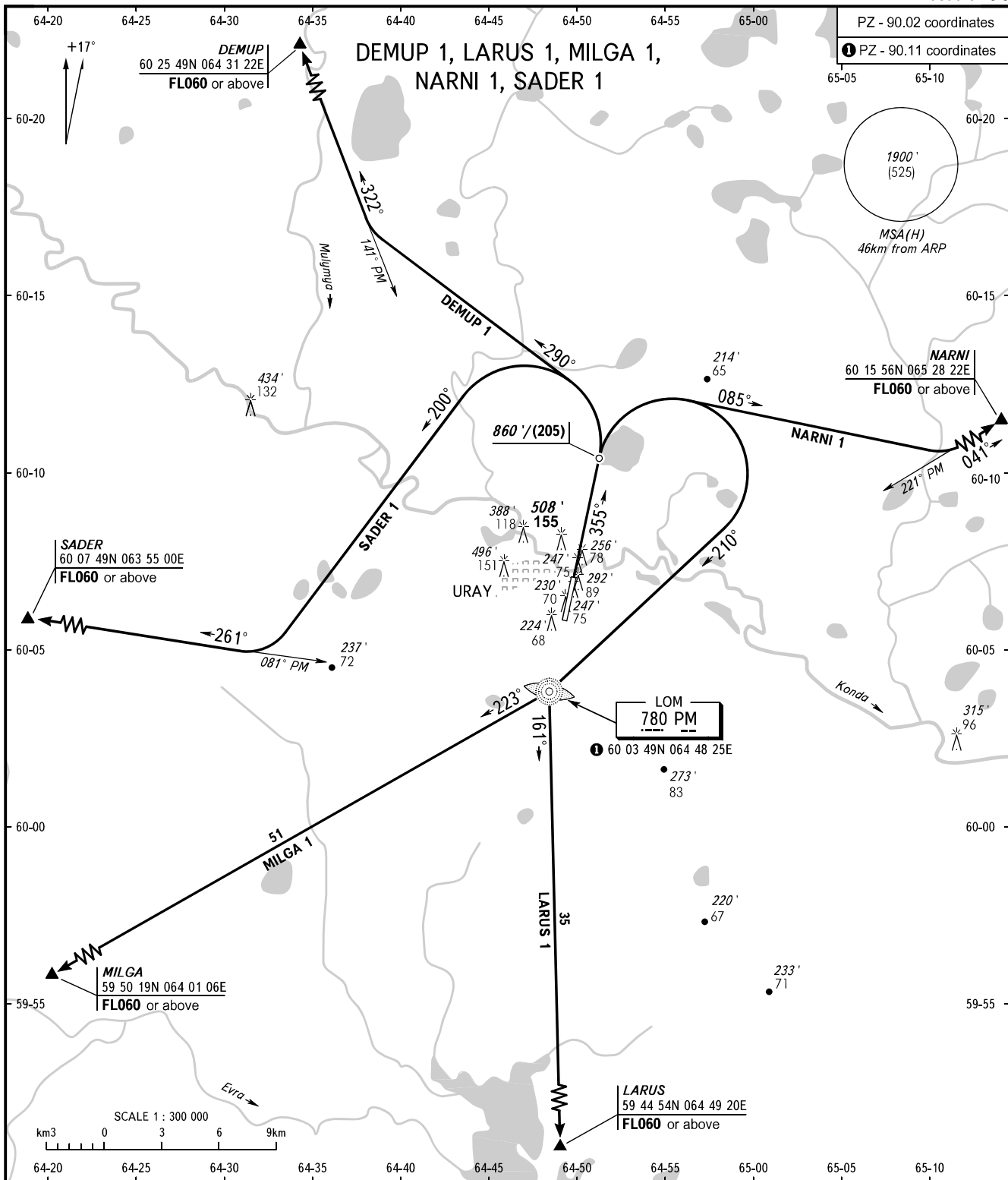


STANDARD DEPARTURE CHART  
INSTRUMENT (SID) - ICAO

TRANSITION ALT: **4000'**  
TRANSITION HGT: **(1165)**

URAY, RUSSIA  
URAY  
RWY 36



INFORMATSIYA **119.300**

**WARNING:**

1. Flights over the city are PROHIBITED.
2. Departing ACFT, executing flights under IFR, have priority over other departing ACFT.
3. Flight crew shall climb to FL060, establishing radio communication with Tyumen-Control on FREQ 129.400 MHz at 4000'/(1165), unless otherwise instructed.

BEARINGS AND TRACKS ARE MAGNETIC  
ALTITUDES IN **FEET**  
ELEVATIONS IN **FEET** AND METRES  
HEIGHTS IN METRES  
DISTANCES IN KILOMETRES

Alt set: -QNH(QFE on req);  
-hPa(mm on req).