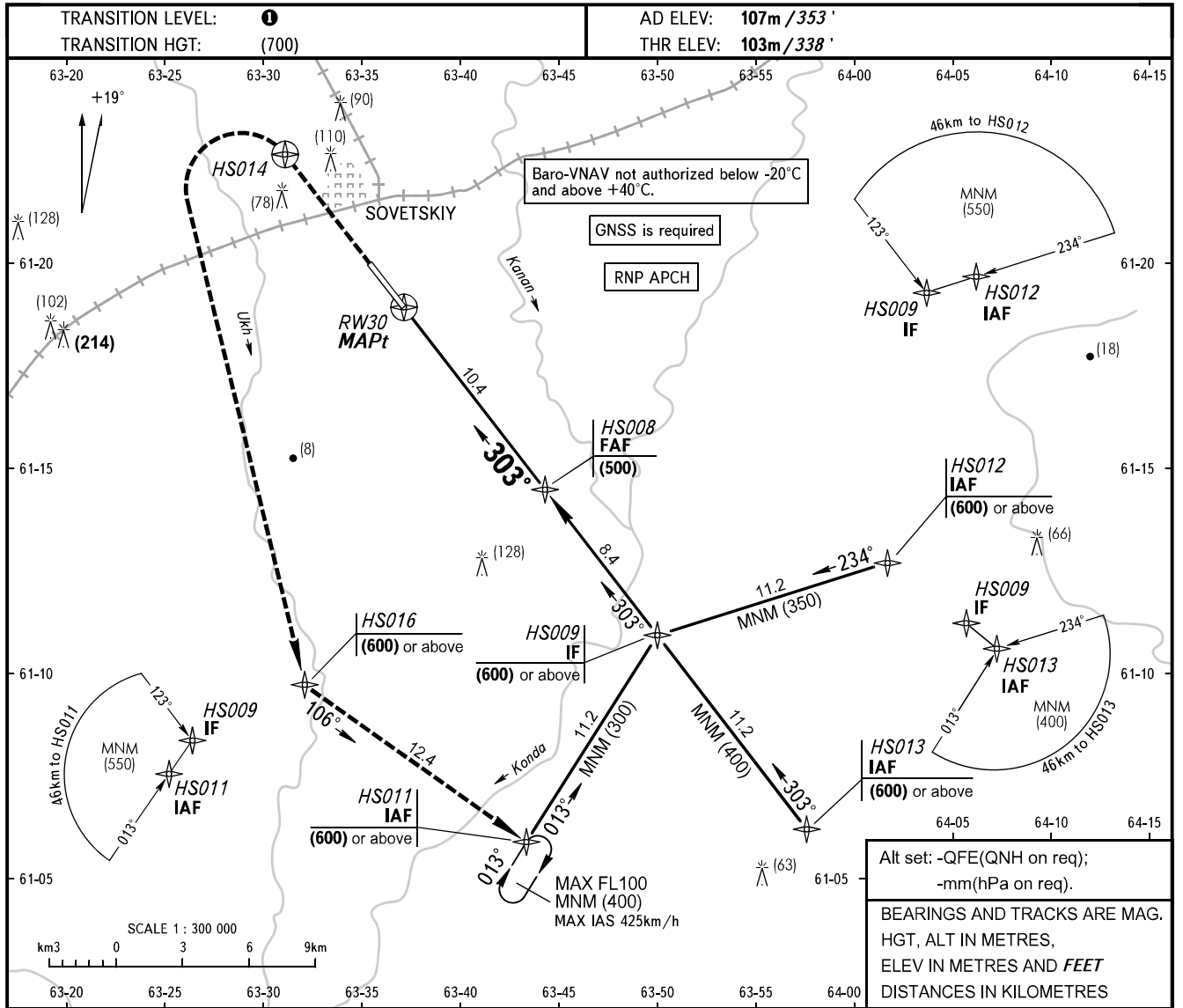


**INSTRUMENT
APPROACH
CHART - ICAO**

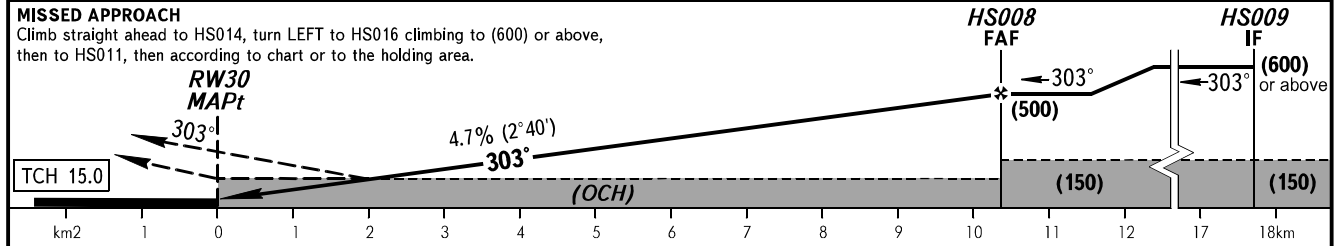
SOVETSKIY TOWER **120.800**

SOVETSKIY, RUSSIA
SOVETSKIY
RNP RWY 30



Alt set: -QFE(QNH on req);
-mm(hPa on req).
BEARINGS AND TRACKS ARE MAG.
HGT, ALT IN METRES,
ELEV IN METRES AND FEET
DISTANCES IN KILOMETRES

DIST TO RW30	4.0	6.0	8.0	10.7
HEIGHT	(200)	(300)	(390)	(500)



OCA(H)		A	B	C	D
Straight-in	LNAV	215(115)	215(115)	235(130)	235(130)
	LNAV/VNAV	210(105)	210(105)	210(105)	210(105)
Approach					
Circling		250(140)	305(200)	335(230)	335(230)

TRANSITION LEVEL:
- FL040 when QFE is 750mm mercury column or above;
- FL050 when QFE is 723mm mercury column or above,
but less than 750mm mercury column;
- FL060 when QFE is less than 723mm mercury column.
Visual manoeuvring over the city is PROHIBITED.

GROUND SPEED	km/h	120	150	180	210	240	270	300	330	360	390	420	450
FAF-MAPt 10400m	min:sec	5:12	4:10	3:28	2:59	2:36	2:19	2:05	1:54	1:44	1:36	1:29	1:23
RATE OF DESCENT	m/s	1.6	1.9	2.3	2.7	3.1	3.5	3.9	4.3	4.9	5.0	5.4	5.8