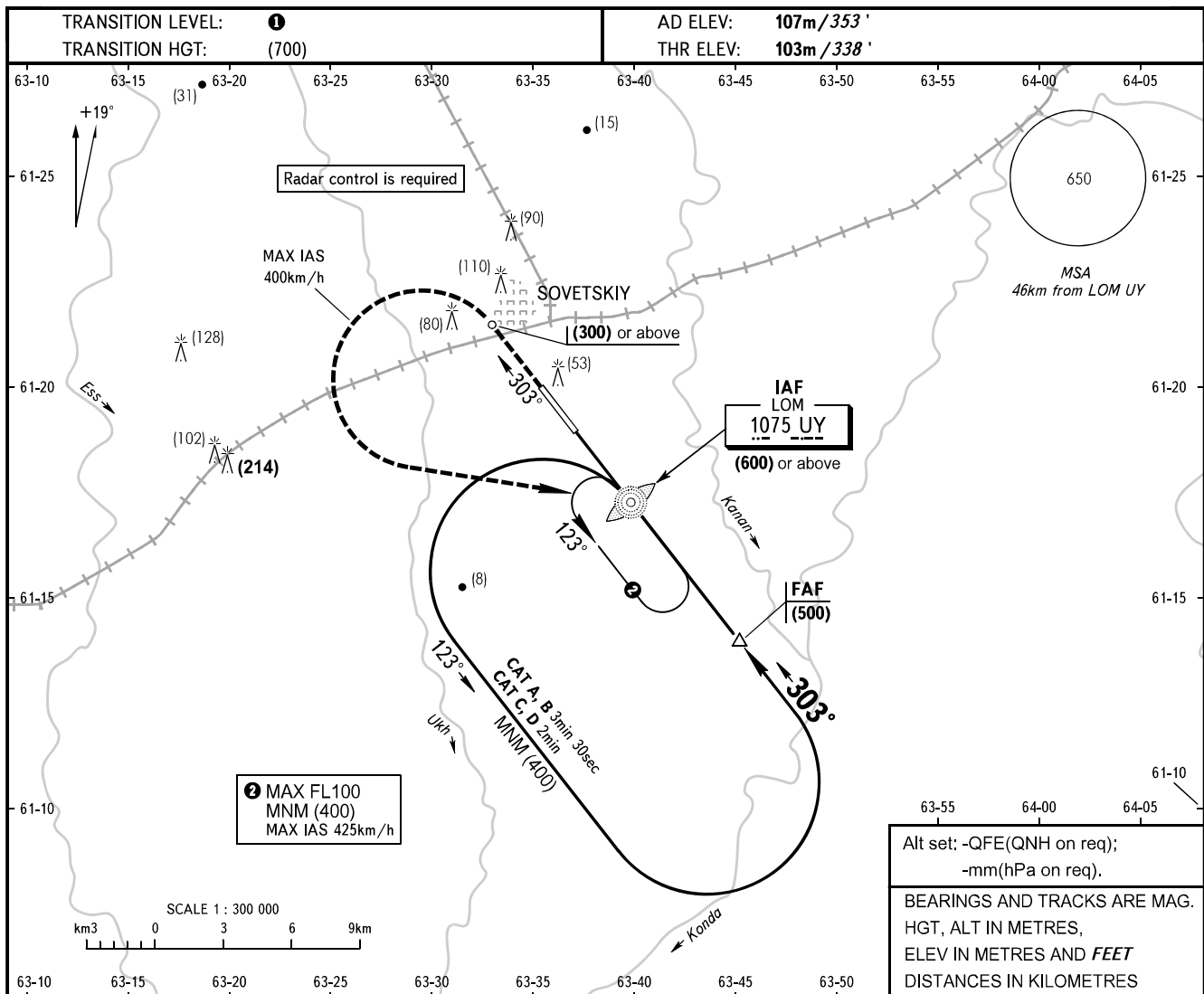


**INSTRUMENT  
APPROACH  
CHART - ICAO**

SOVETSKIY TOWER 120.800

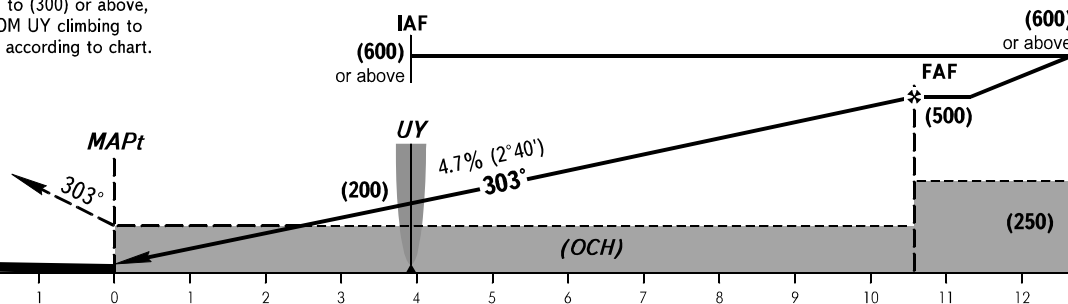
**SOVETSKIY, RUSSIA**  
SOVETSKIY  
NDB Y RWY 30



**MISSED APPROACH**

Climb straight ahead to (300) or above, then turn LEFT to LOM UY climbing to (600) or above, then according to chart.

FAF is fixed by TAR (DIST 11.7).



OCA(H)		A	B	C	D
Straight-in	Approach	210(105)	210(105)	210(105)	210(105)
	Approach				
Circling		250(140)	305(200)	335(230)	335(230)

**1** **TRANSITION LEVEL:**  
- FL040 when QFE is 750mm mercury column or above;  
- FL050 when QFE is 723mm mercury column or above, but less than 750mm mercury column.  
- FL060 when QFE is less than 723mm mercury column.  
Visual manoeuvring over the city is PROHIBITED.

GROUND SPEED	km/h	120	150	180	210	240	270	300	330	360	390	420	450
FAF-MAPt 10400m	min:sec	5:12	4:10	3:28	2:59	2:36	2:19	2:05	1:54	1:44	1:36	1:29	1:23
RATE OF DESCENT	m/s	1.5	1.9	2.3	2.7	3.1	3.5	3.9	4.3	4.6	5.0	5.4	5.8